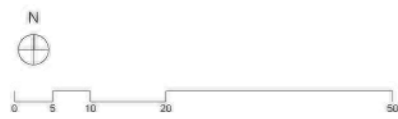
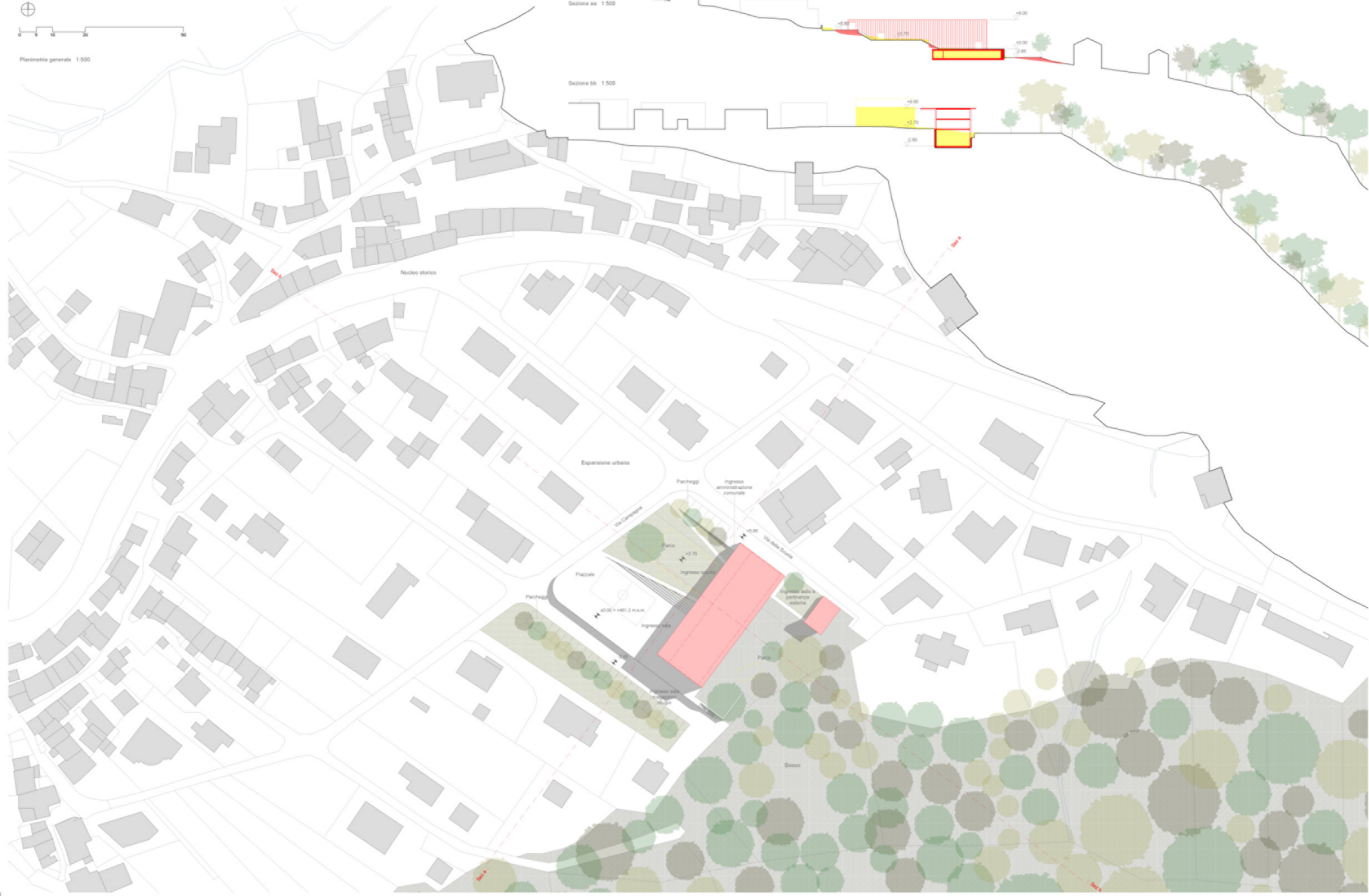
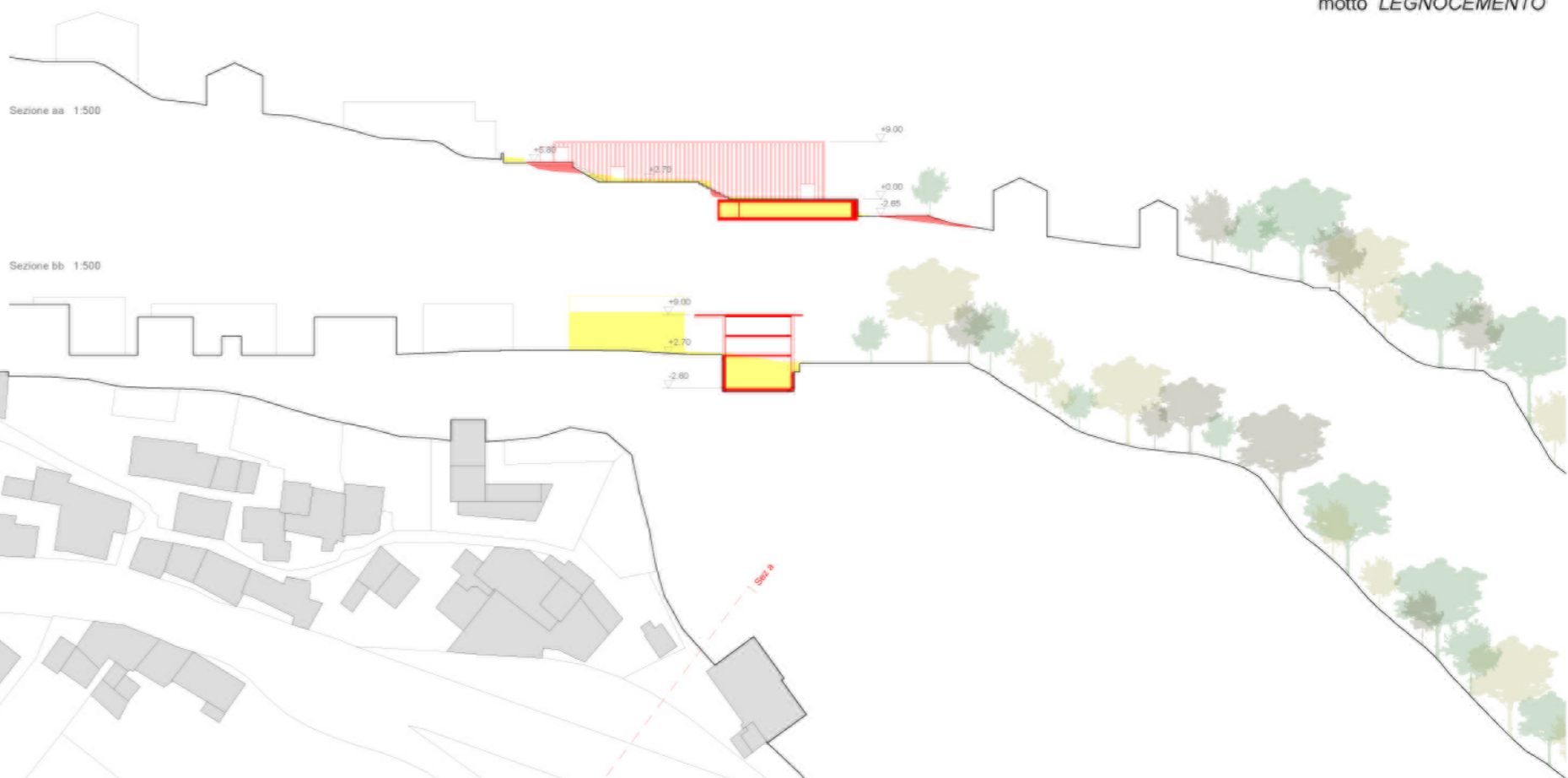


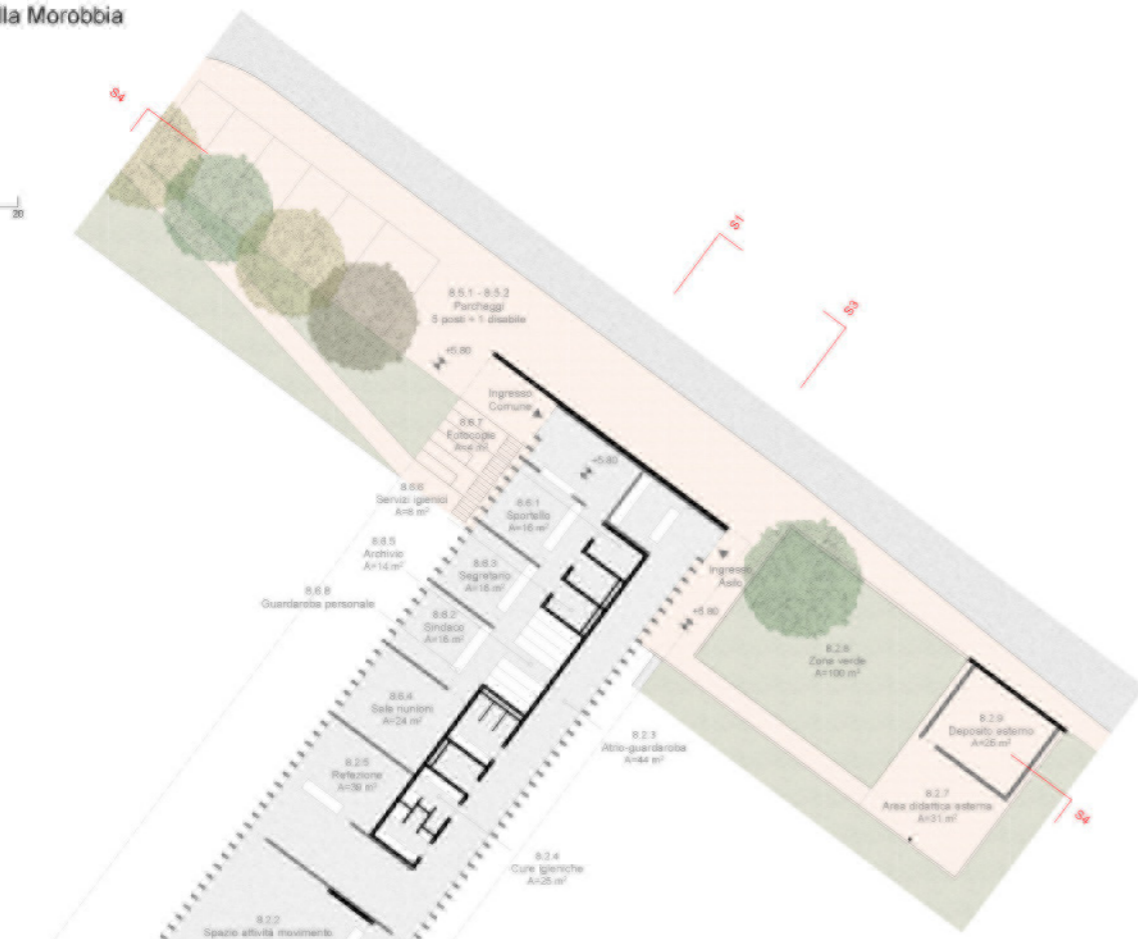
Tav. 1



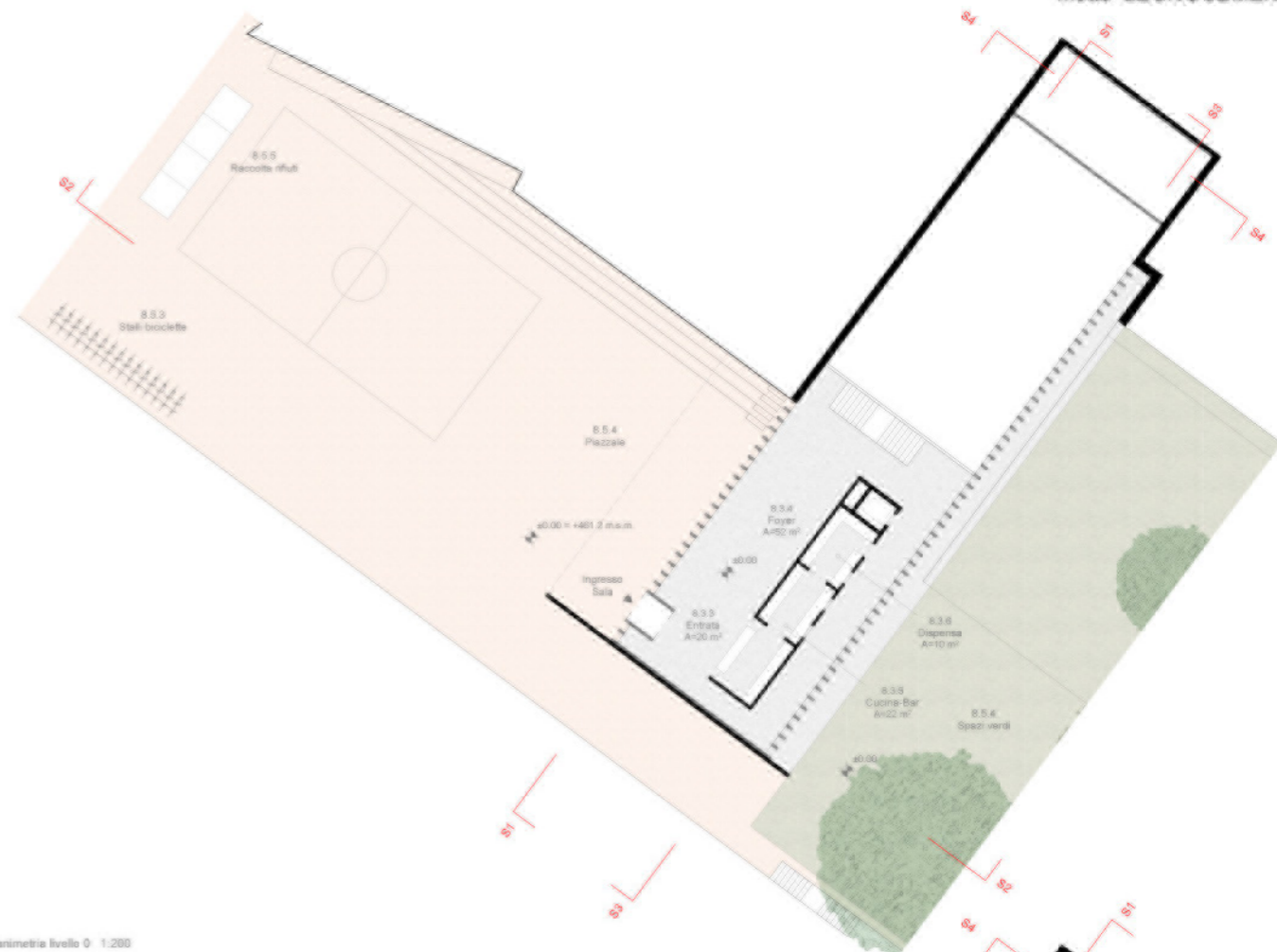
Planimetria generale 1:500



Tav. 2



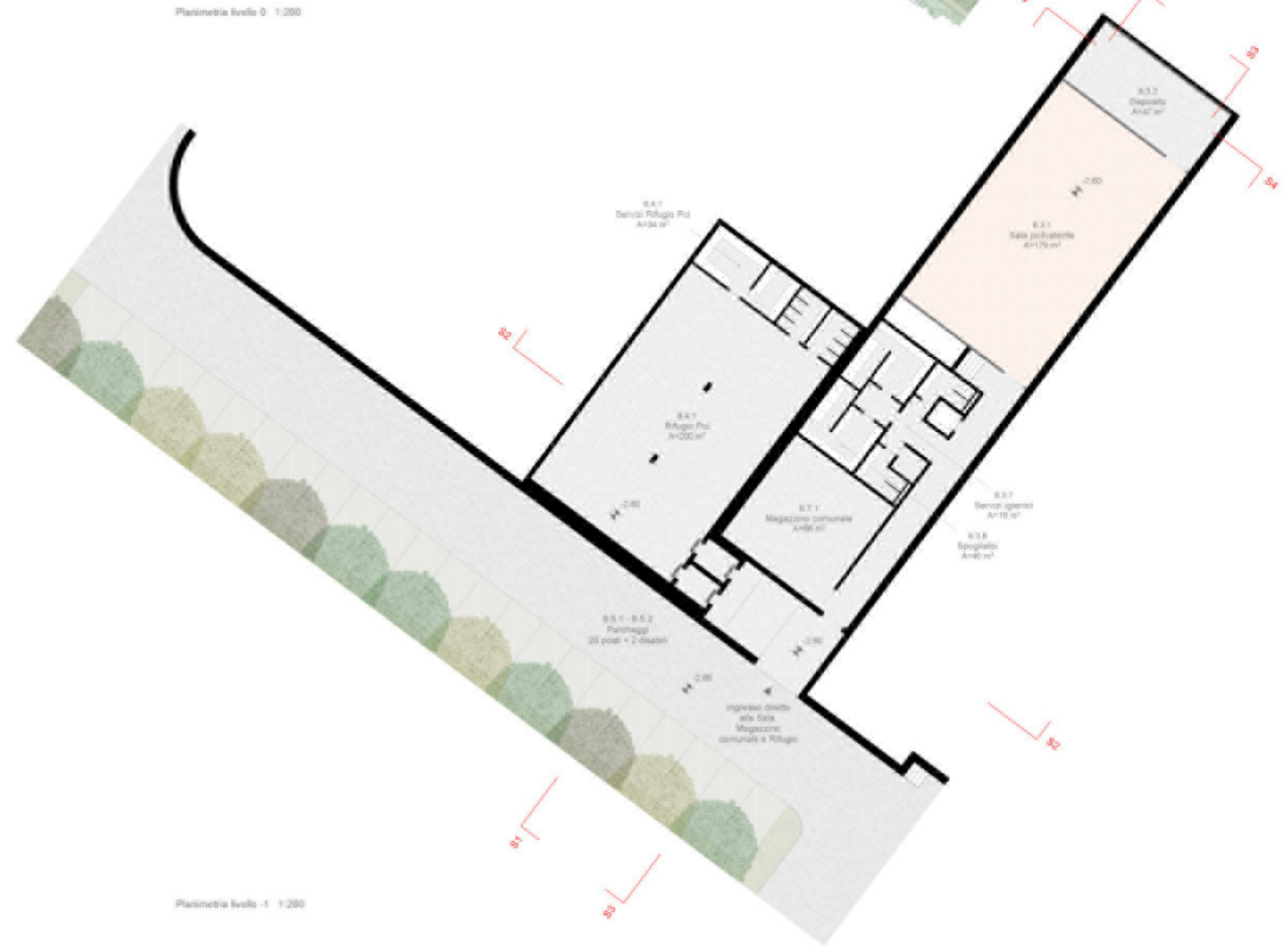
Planimetria livello +2.1200



Planimetria livello 0.1200

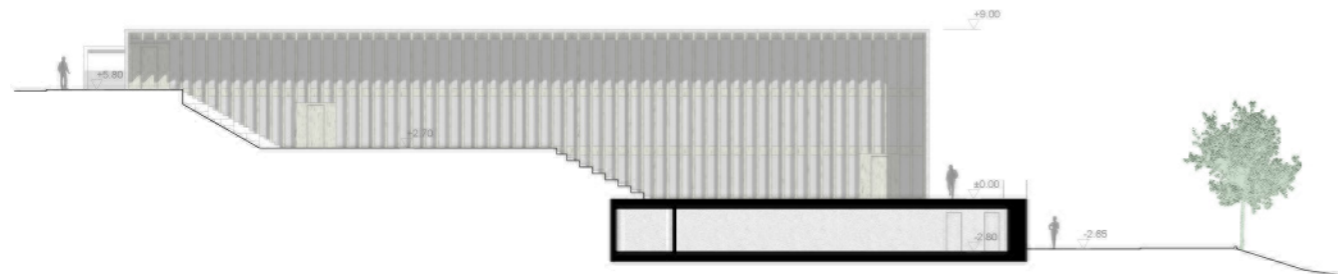


Planimetria livello +1.1200

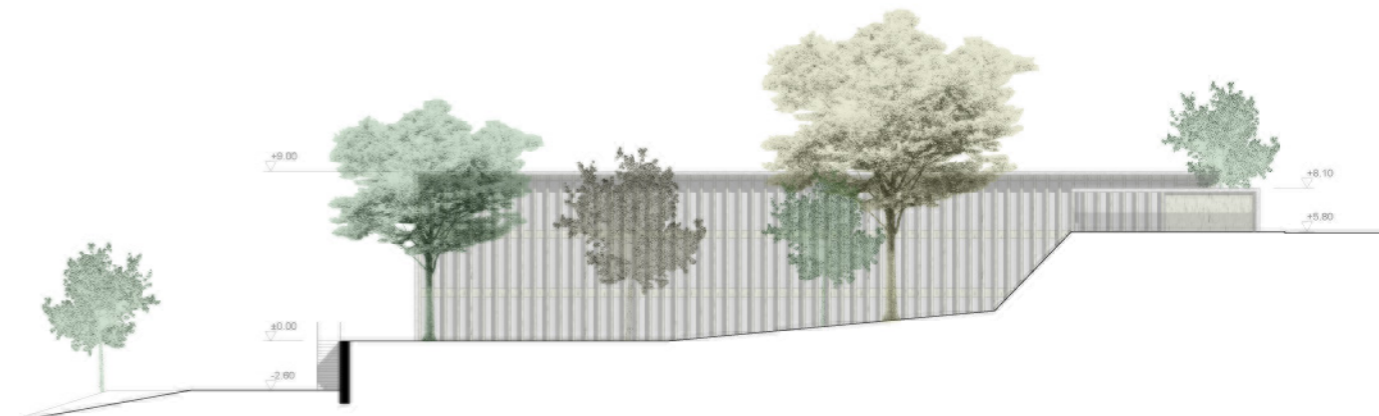


Planimetria livello -1.1200

Tav. 3



Prospecto NO 1:200



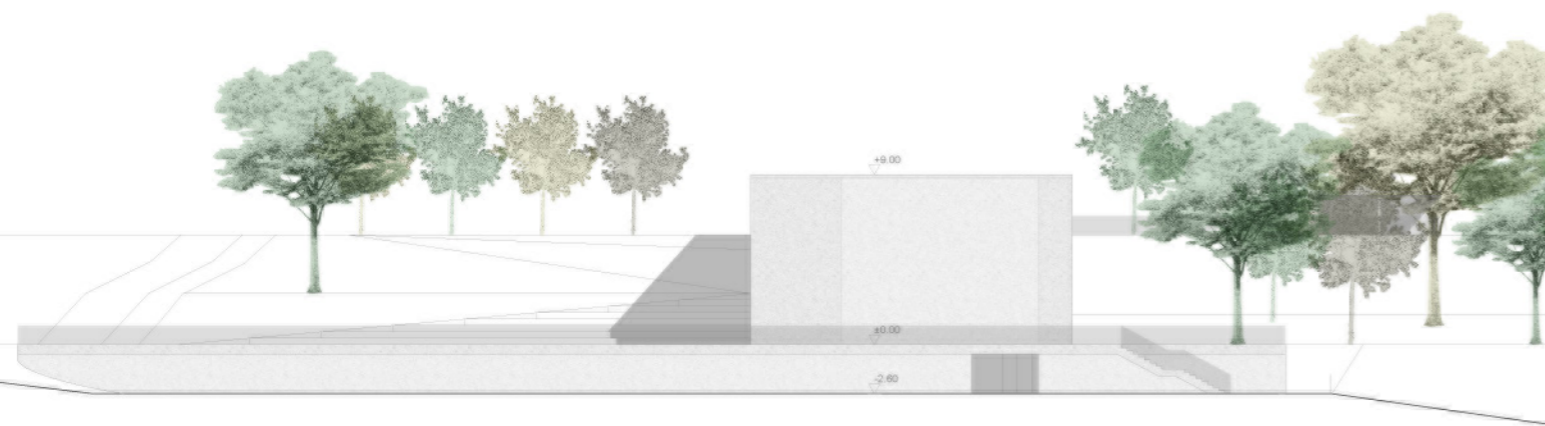
Prospecto SE 1:200



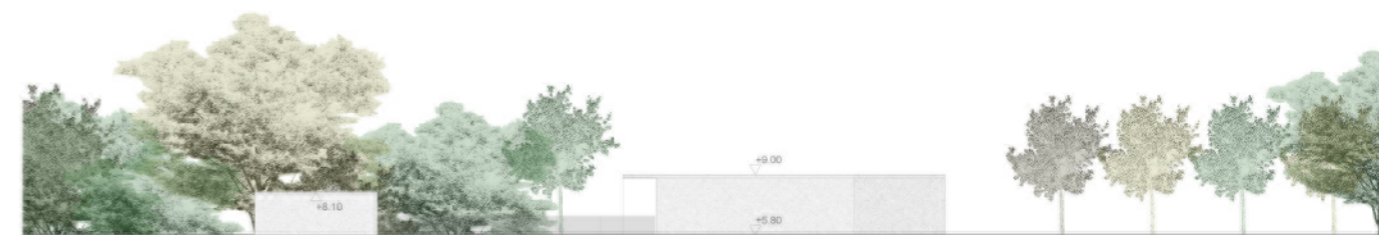
Sezione 1 1:200



Sezione 3 1:200



Prospecto SO 1:200



Prospecto NE 1:200



Sezione 2 1:200



Sezione 4 1:200

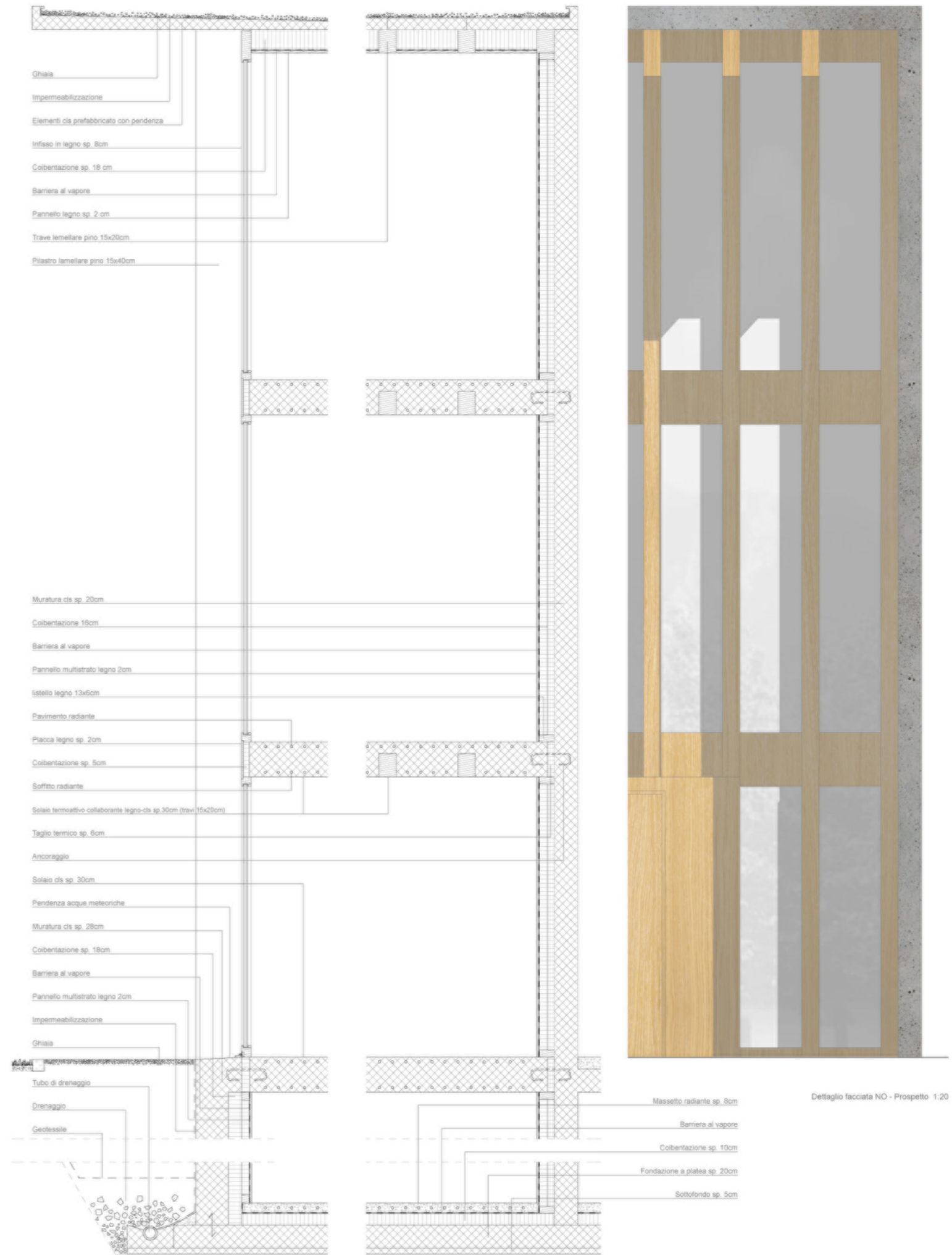
Tav. 4



Vista esterna lato NO



Vista interna aula



Dettaglio facciata SE - Sezione 1:20

Dettaglio facciata SO - Sezione 1:20

Dettaglio facciata NO - Prospetto 1:20