



Situation 1:1250



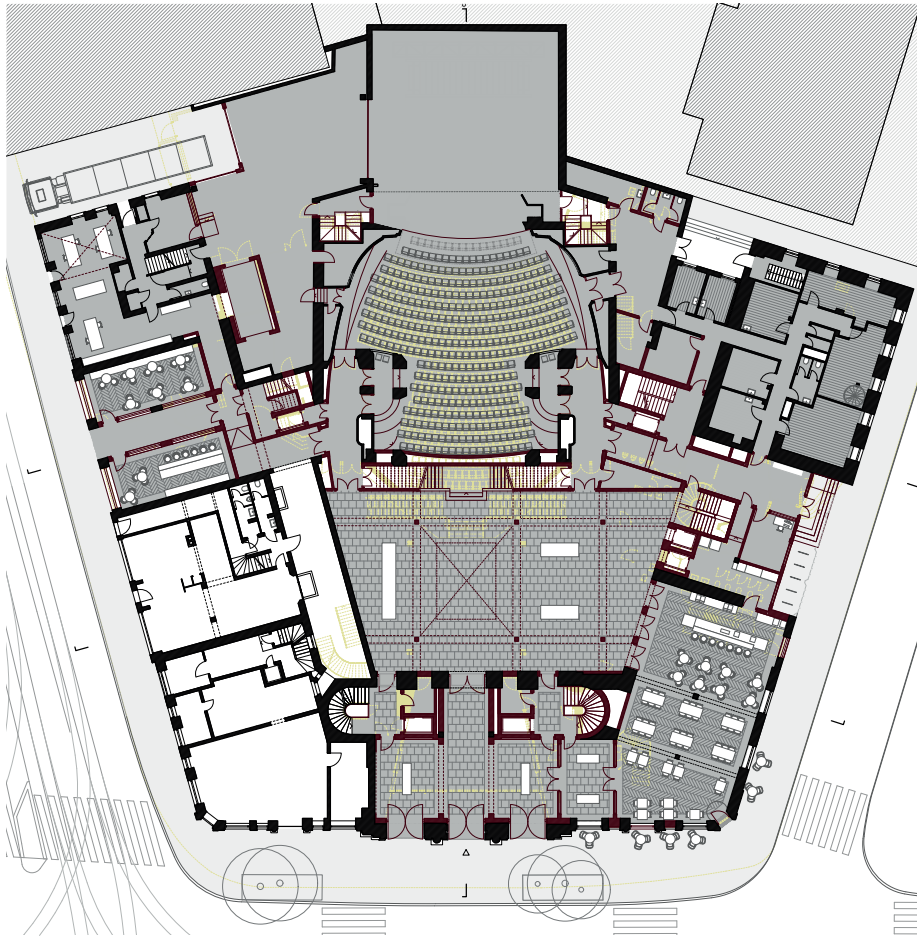
Ansicht Südwest 1:600



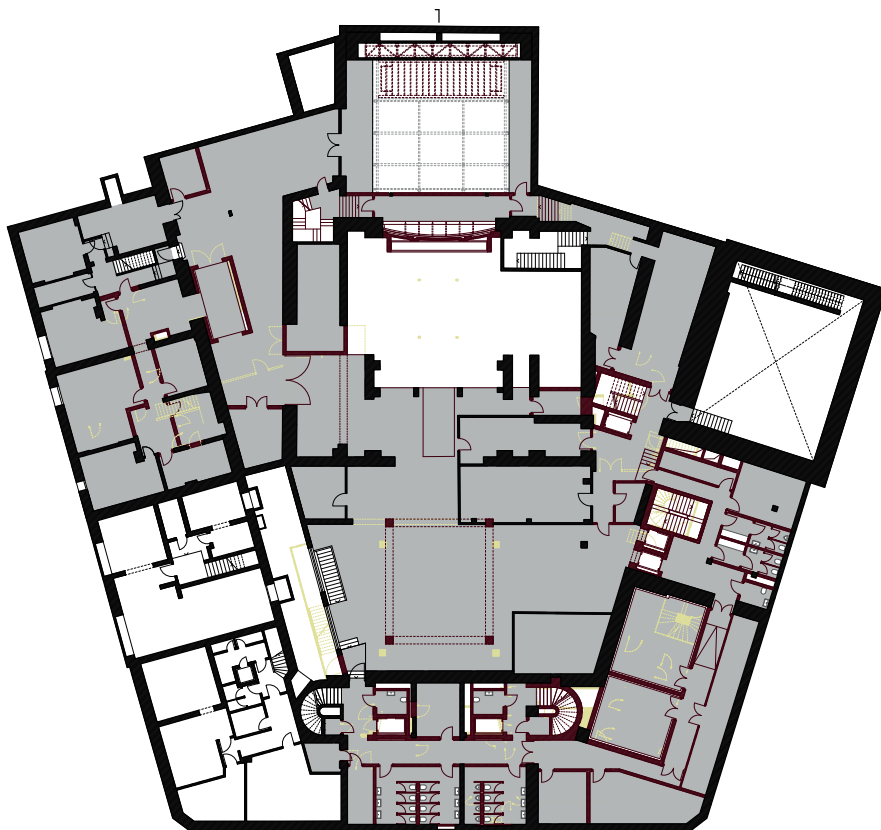
Visualisierung



Ansicht Nordost 1:600

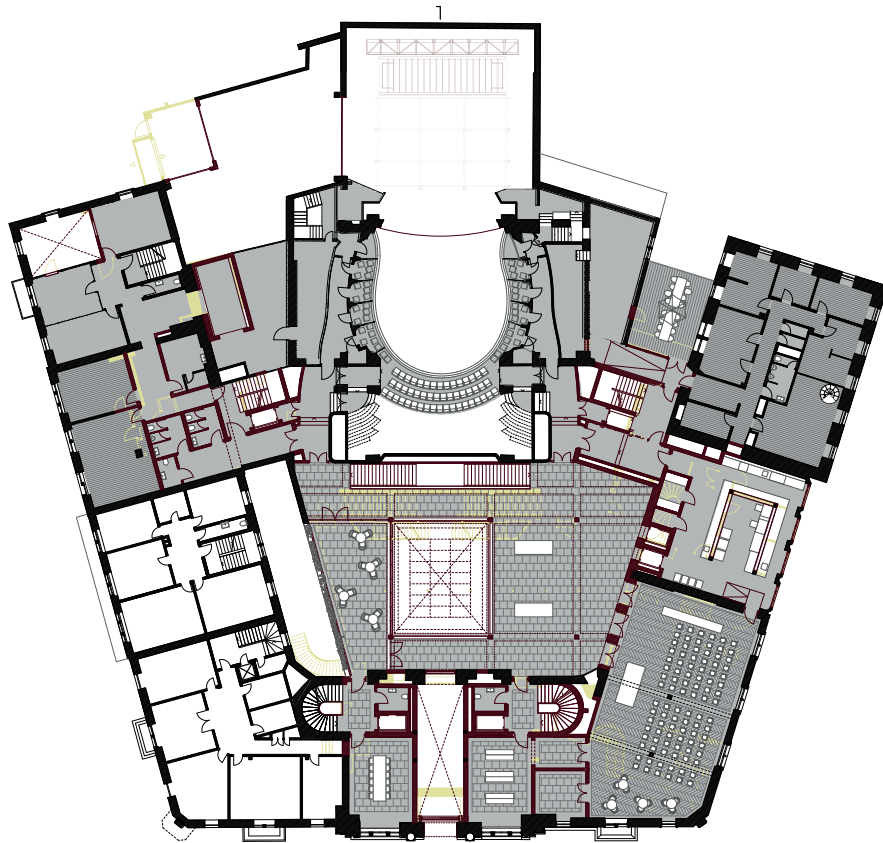


Grundriss Erdgeschoss 1:600

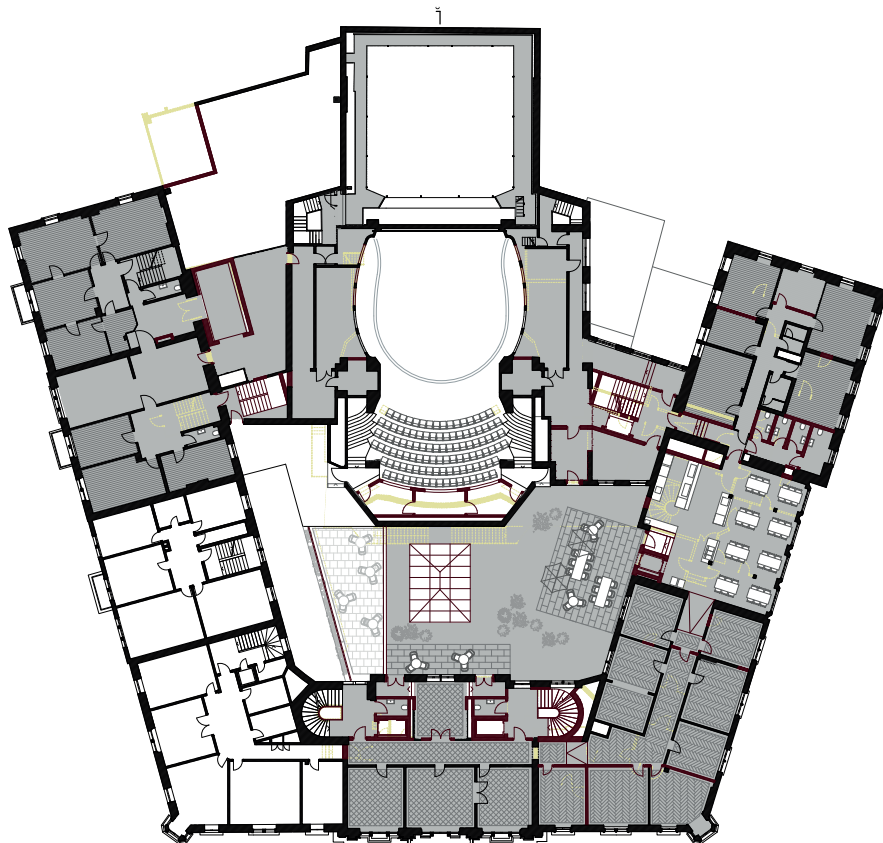


Grundriss 1. Untergeschoss 1:600



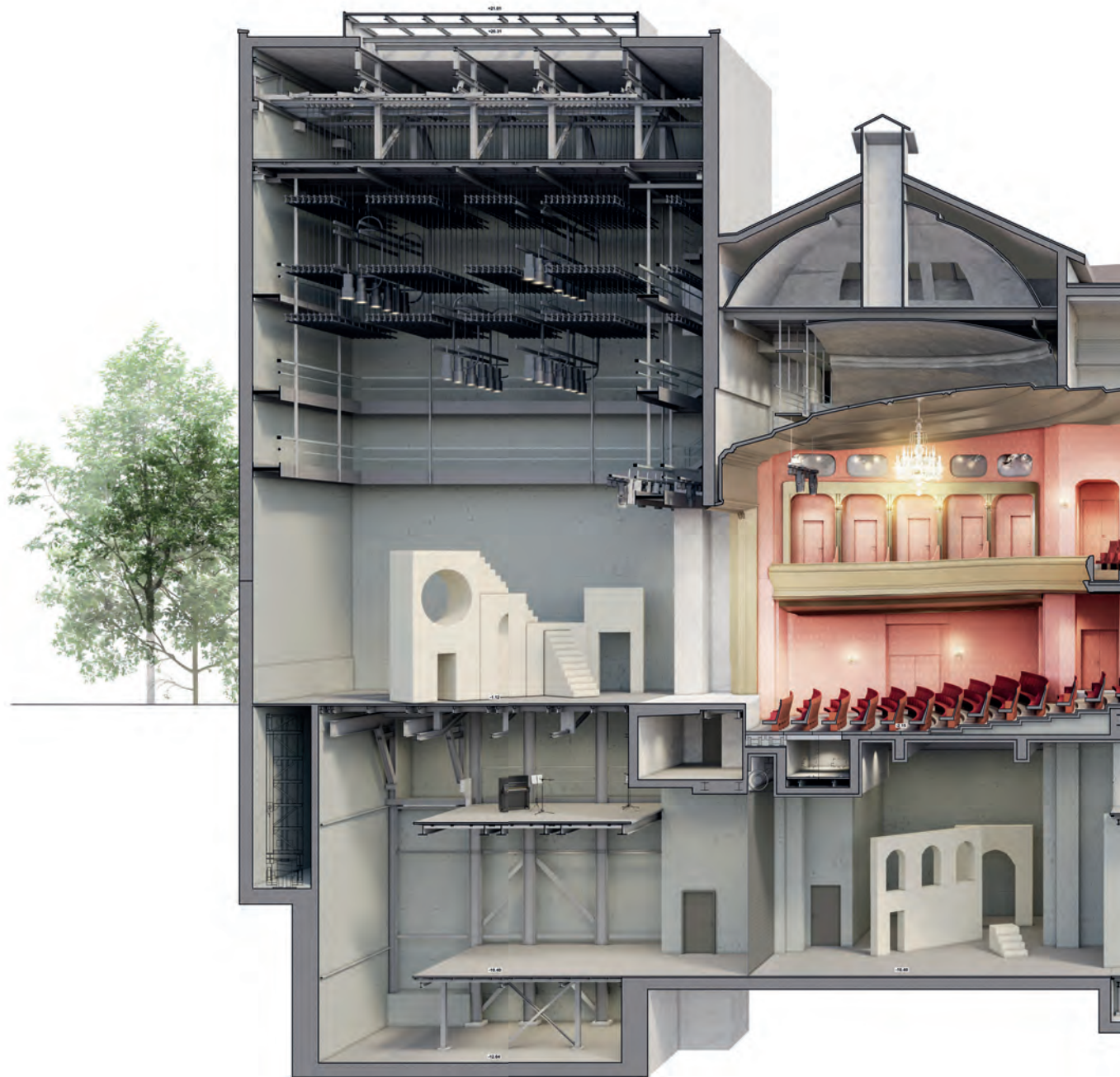


Grundriss 1. Obergeschoss 1:600

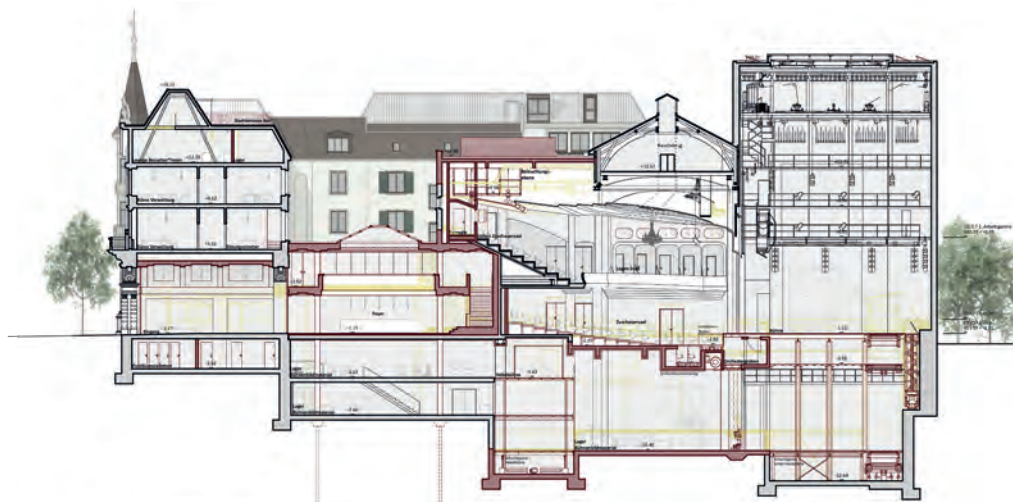


Grundriss 2. Obergeschoss 1:600

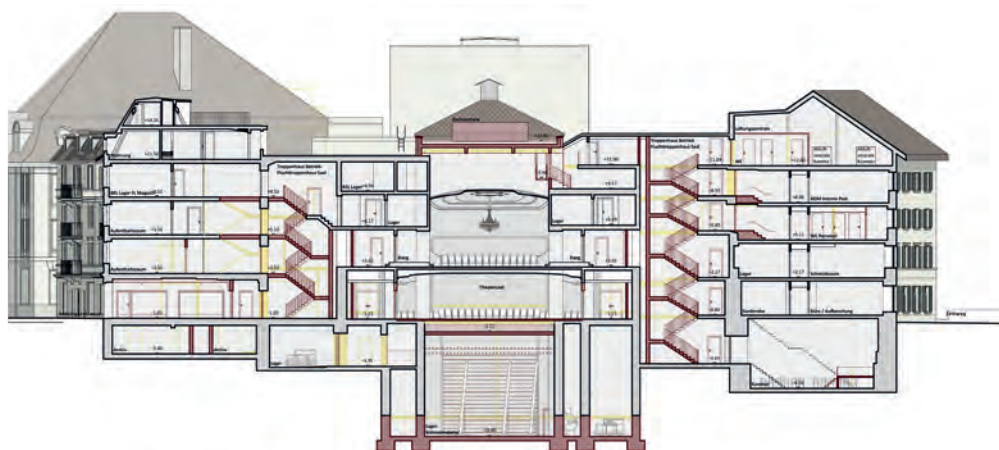




Atmosphärischer Längsschnitt 1:200



Schnitt 1:600



Schnitt 1:600



Visualisierungen Foyer



Visualisierungen Foyer und Saal