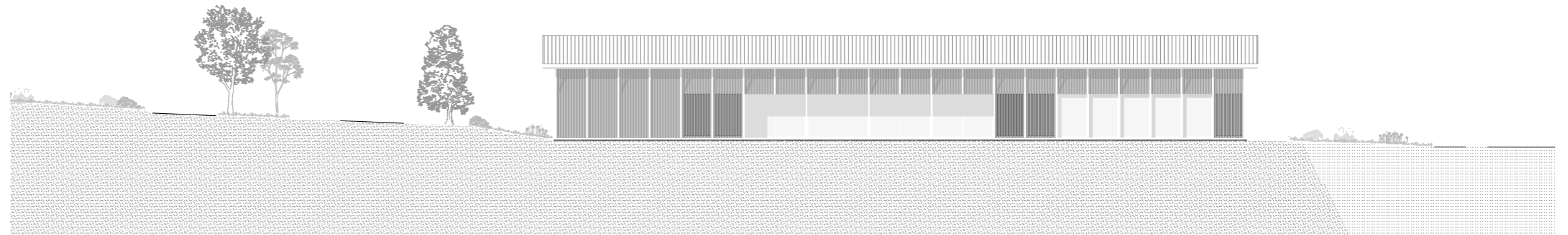


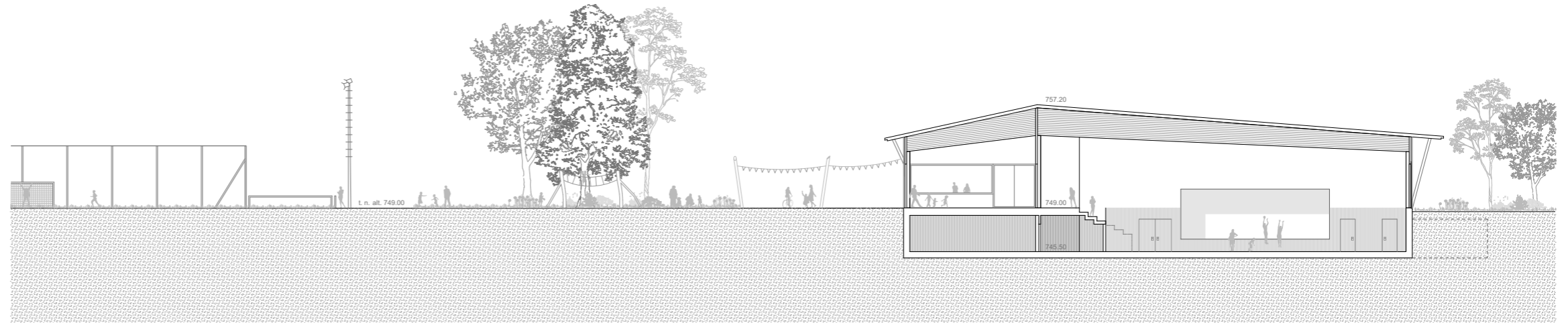
rez inférieur - flux et programme

rez supérieur - flux et programme



FACADE NORD-EST 1:200

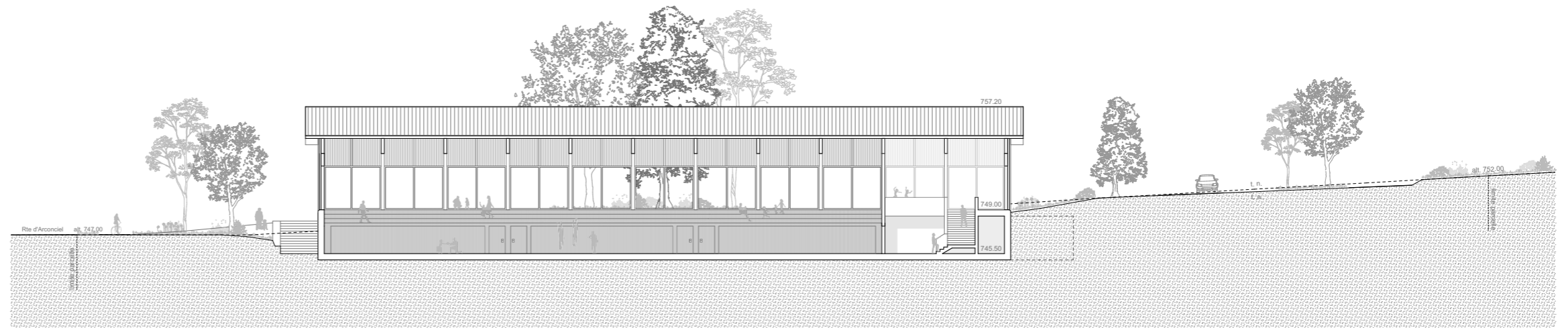
axonométrie du principe structurel et constructif



COUPE A-A 1:200

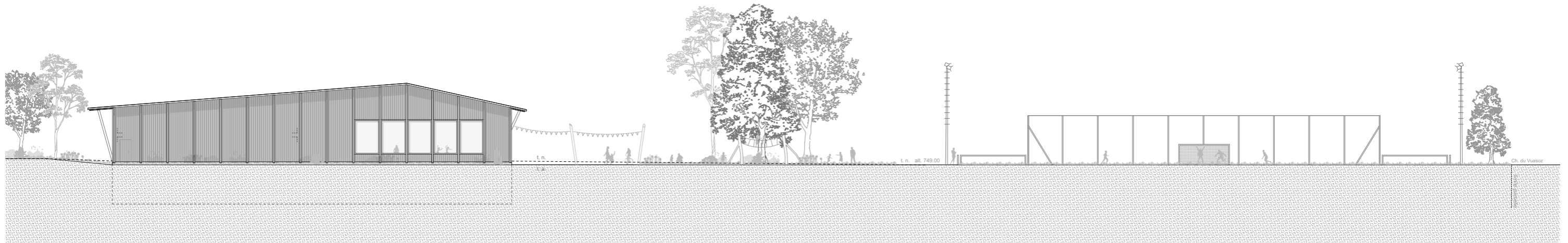
rez inférieur - protection incendie

rez supérieur - protection incendie

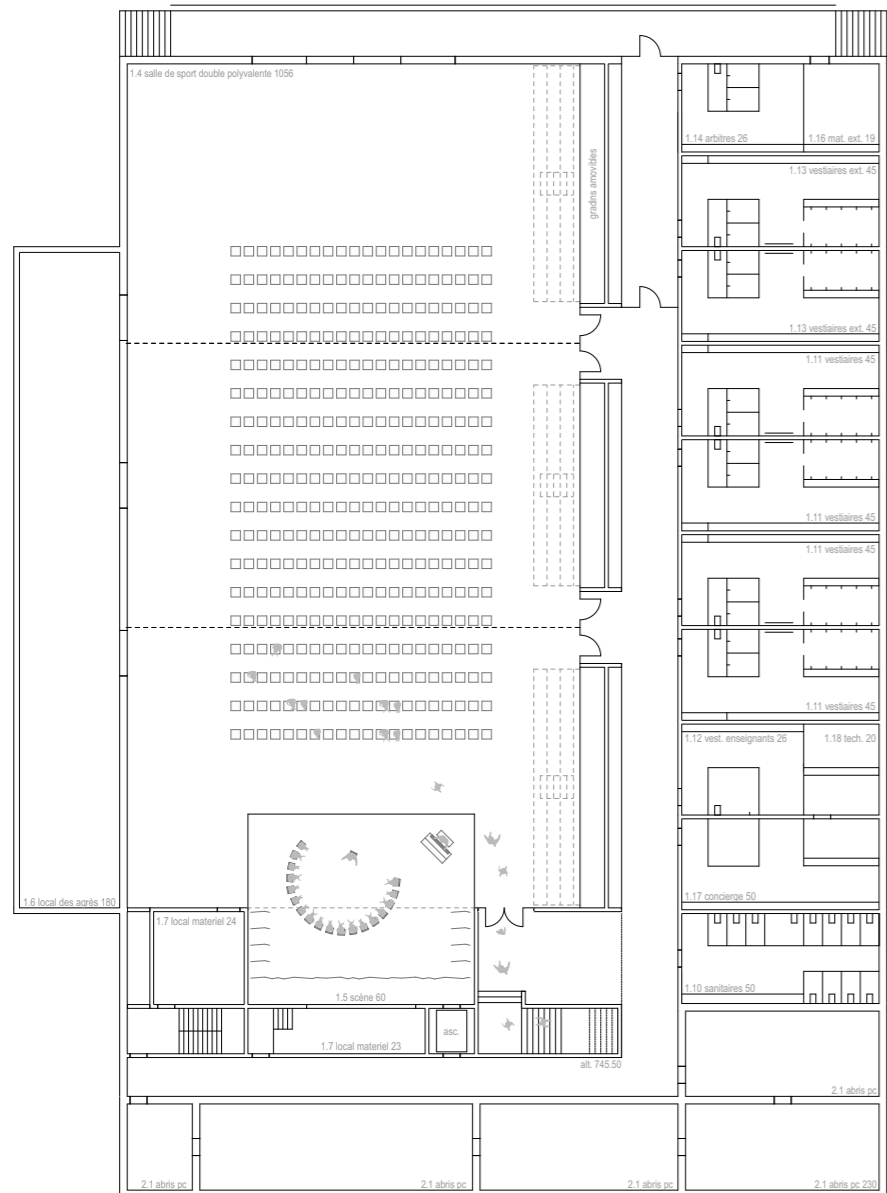


ETAGE 1-200 (angle sud-ouest du bâtiment)

COUPE B-B 1:200



FACADE NORD-OUEST 1:200



REZ-DE-CHAUSSEE INFÉRIEUR 1:200



ILLUSTRATION EXTÉRIEURE