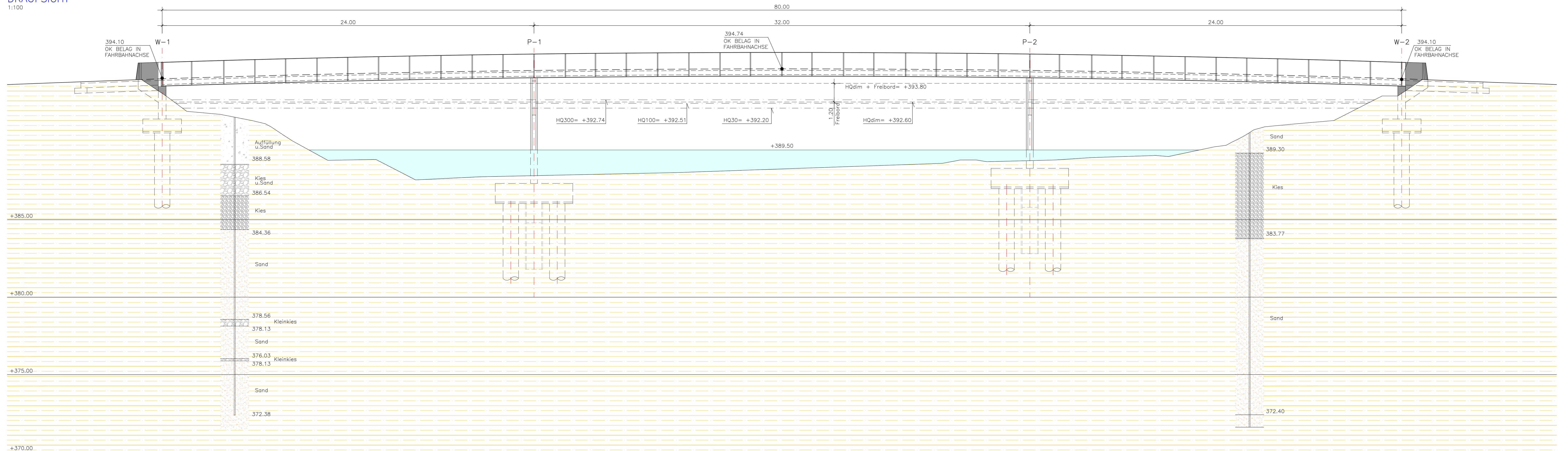


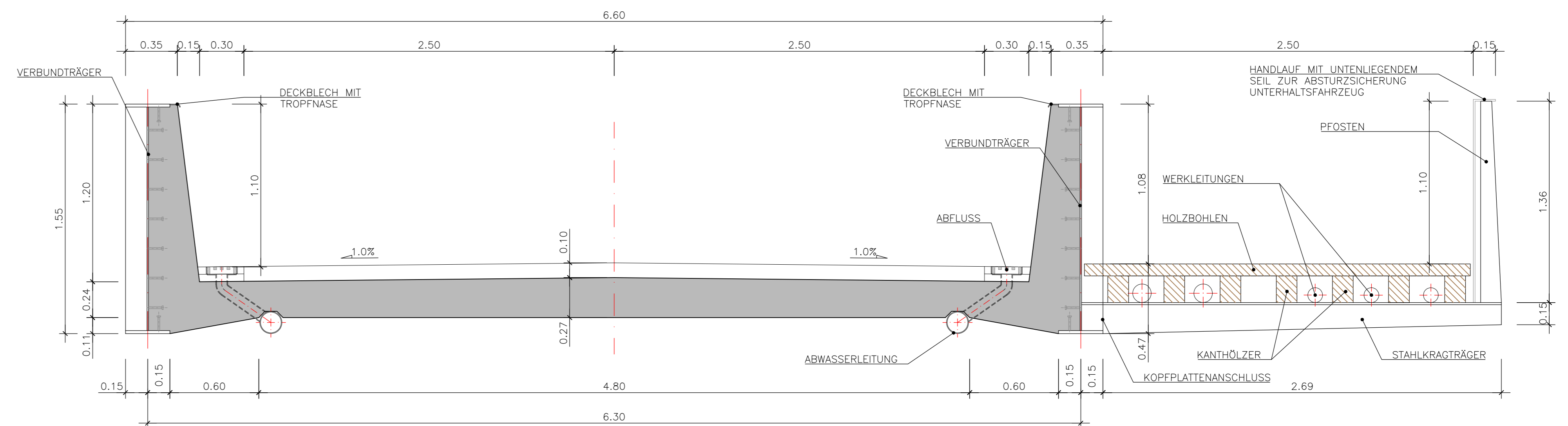
DRAUFSICHT  
1:100



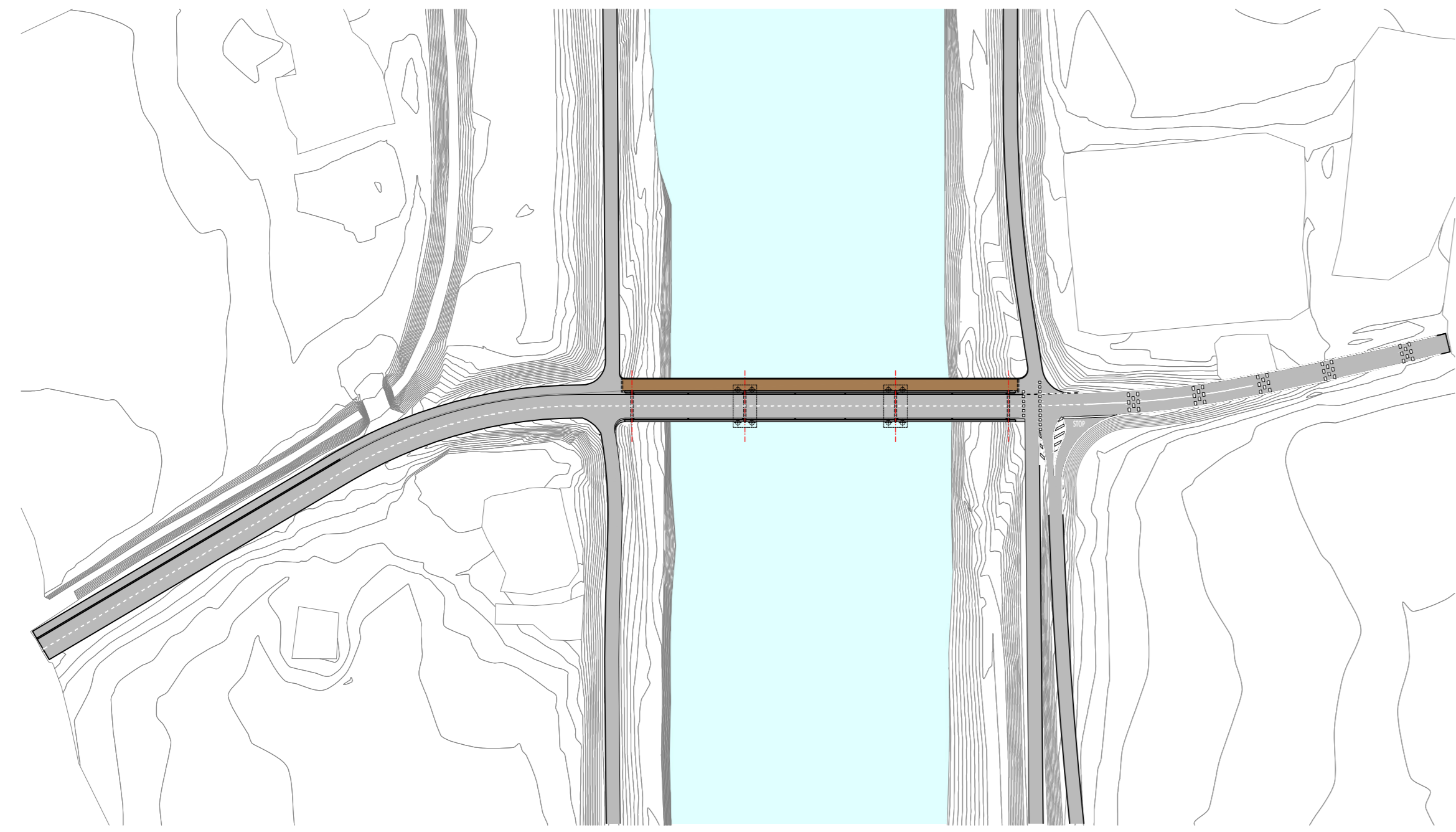
ANSICHT  
1:100



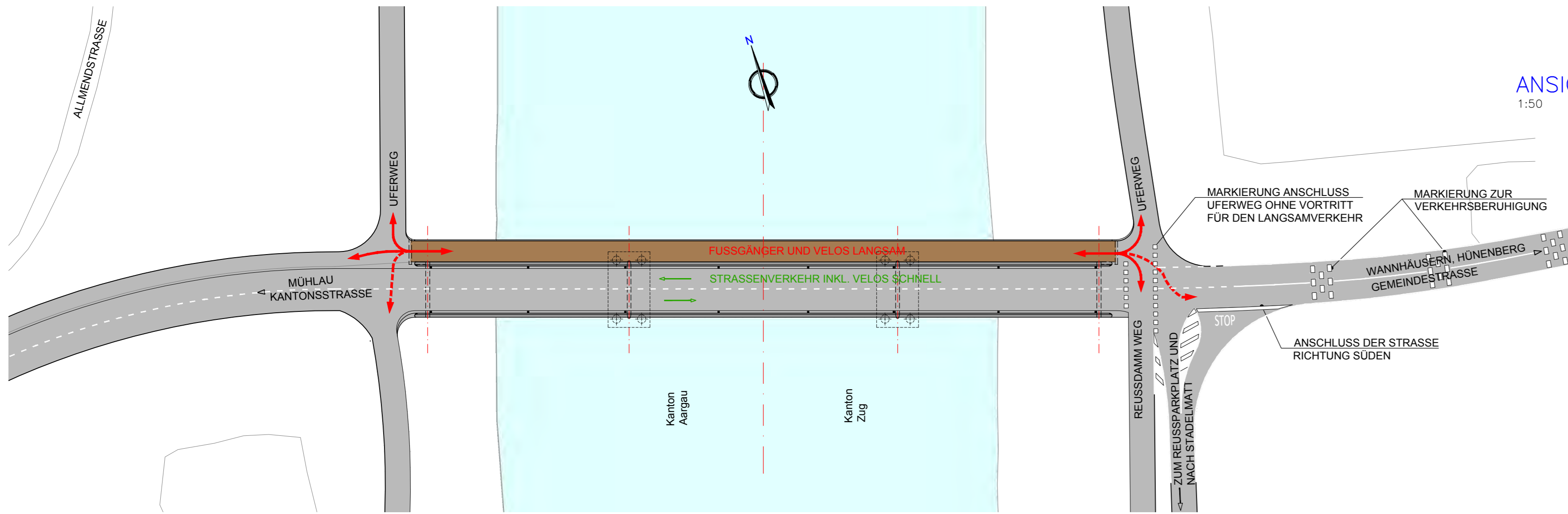
ANSICHT NORDOST



QUERSCHNITT ÜBERBAU  
1:20



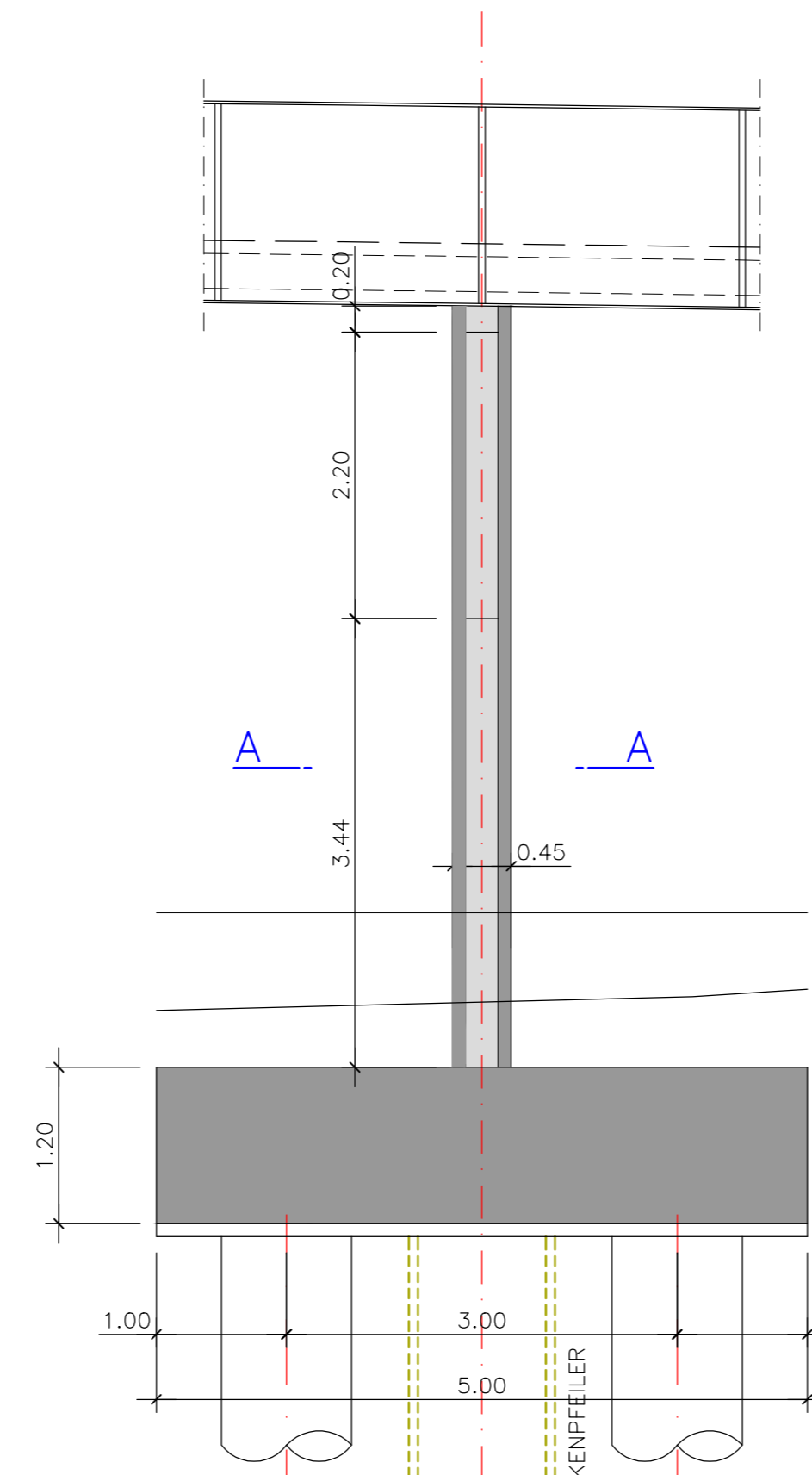
SITUATION  
1:1000



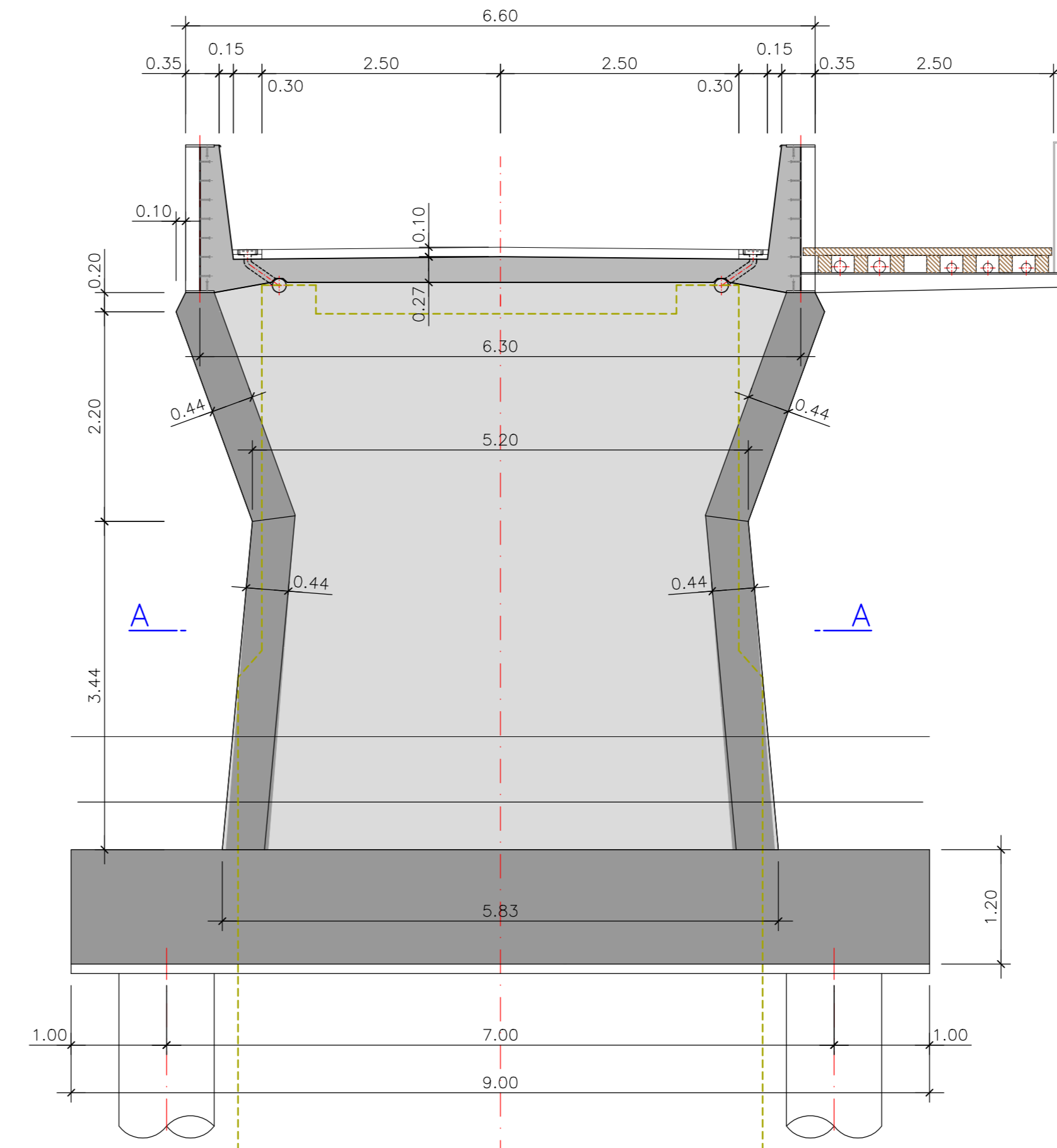
VERKEHRSFÜHRUNG  
1:500



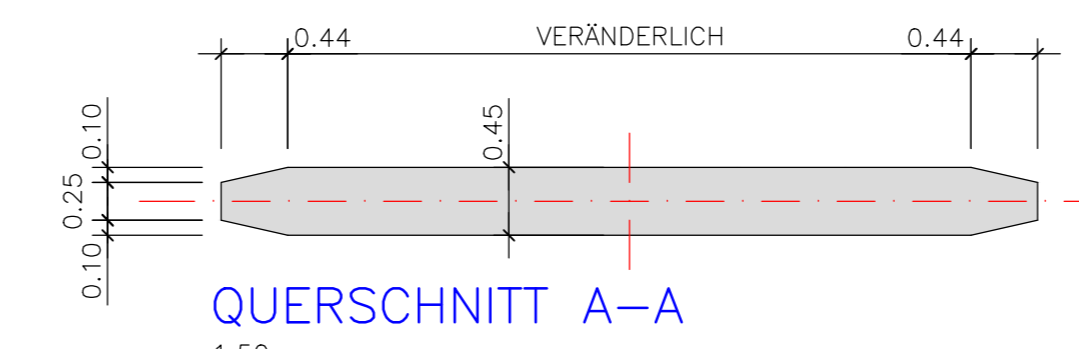
ANSICHT NORDWEST  
1:500



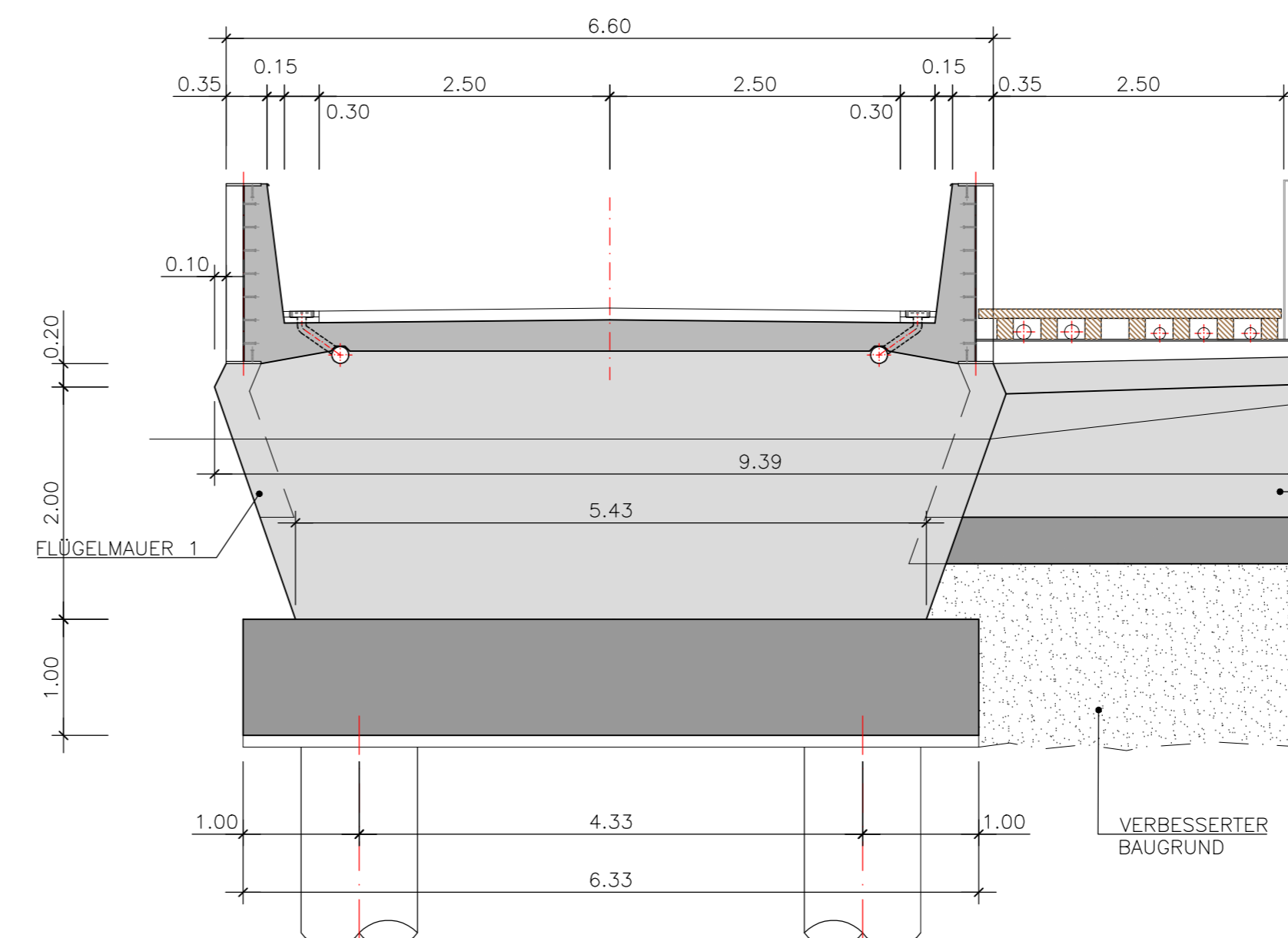
ANSICHT PFEILER IN BRÜCKENQUERRICHTUNG  
1:50



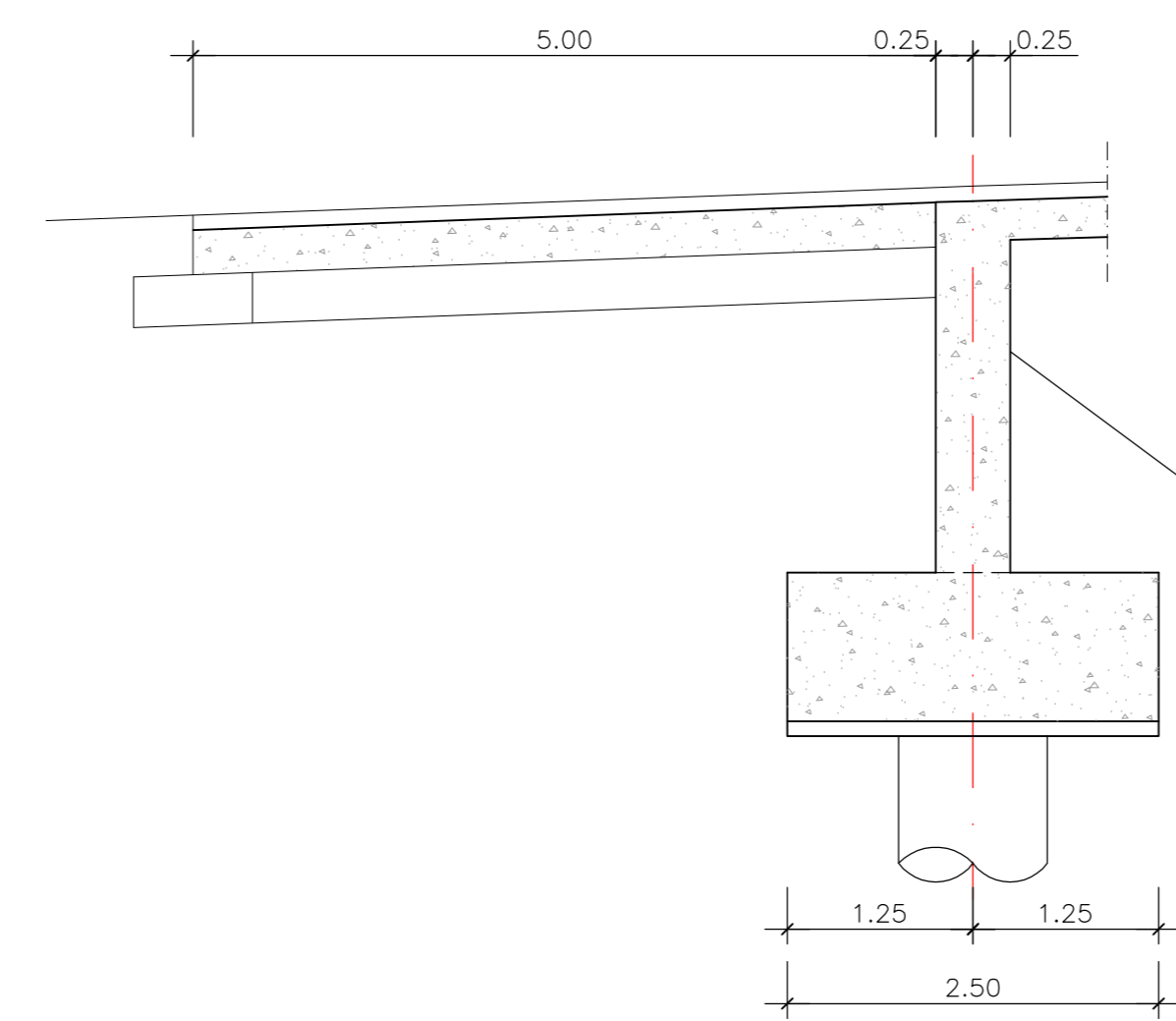
ANSICHT PFEILER IN BRÜCKENLÄNGSRICHTUNG  
1:50



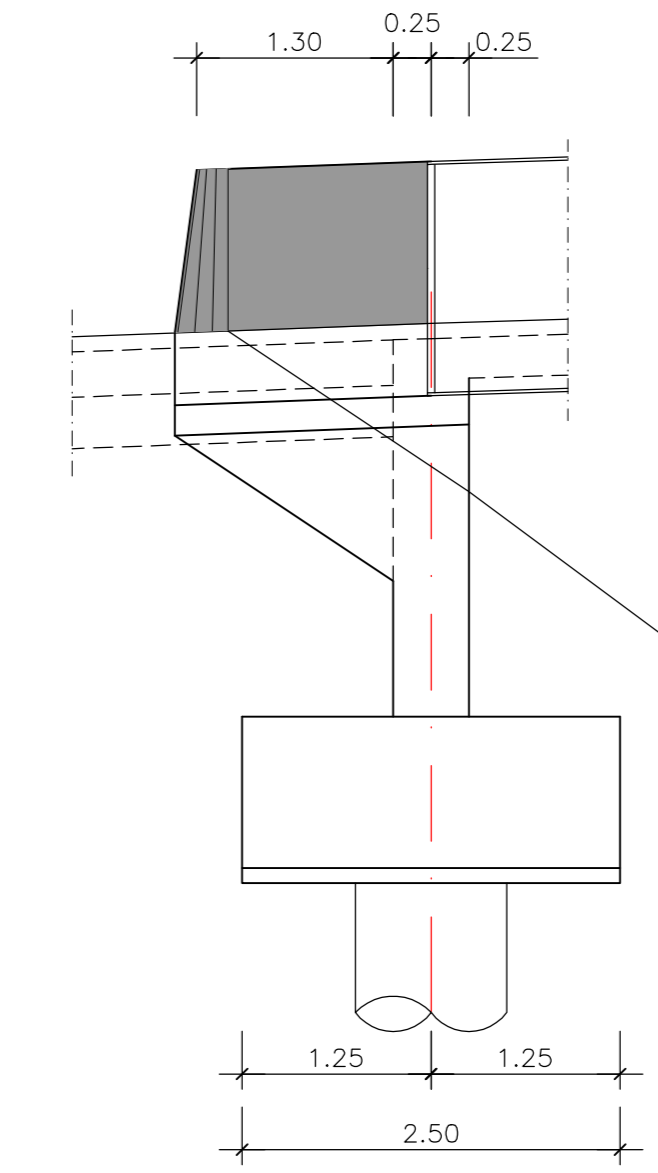
QUERSCHNITT A-A  
1:50



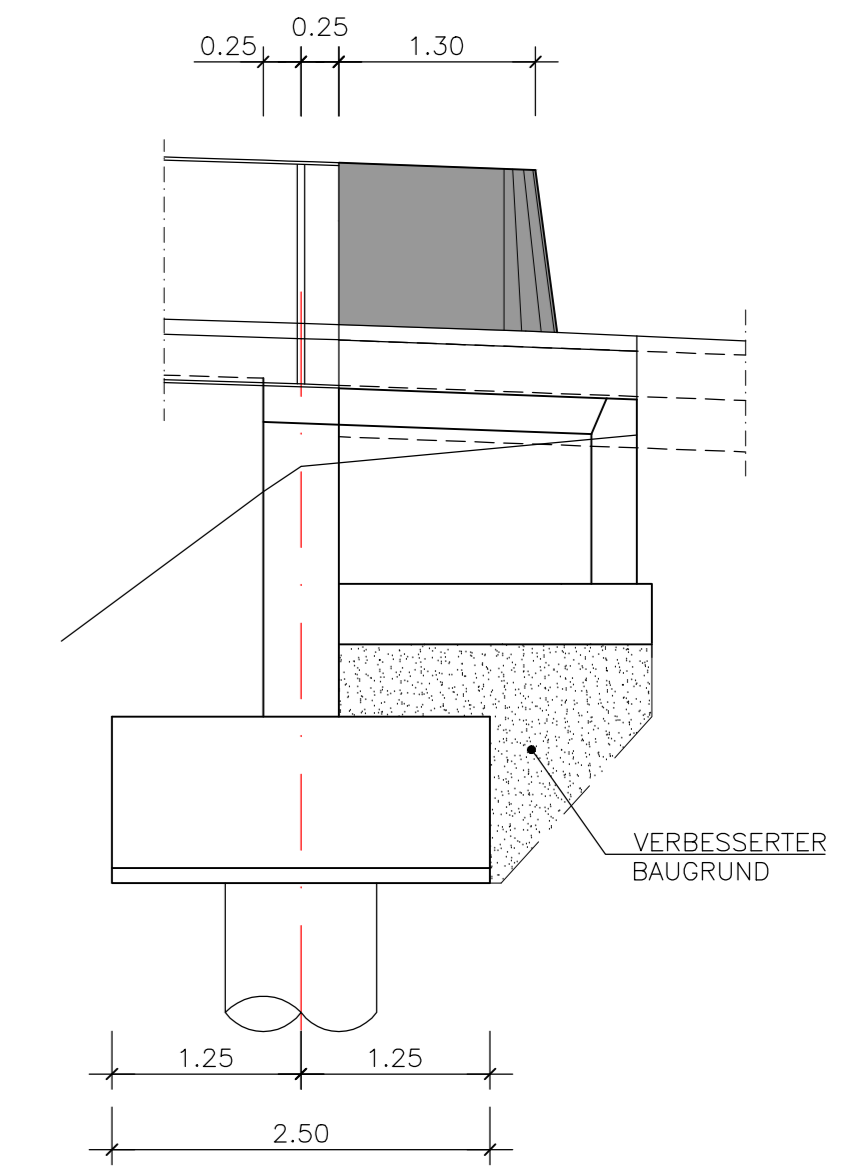
ANSICHT WIDERLAGER IN BRÜCKENLÄNGSRICHTUNG  
1:50



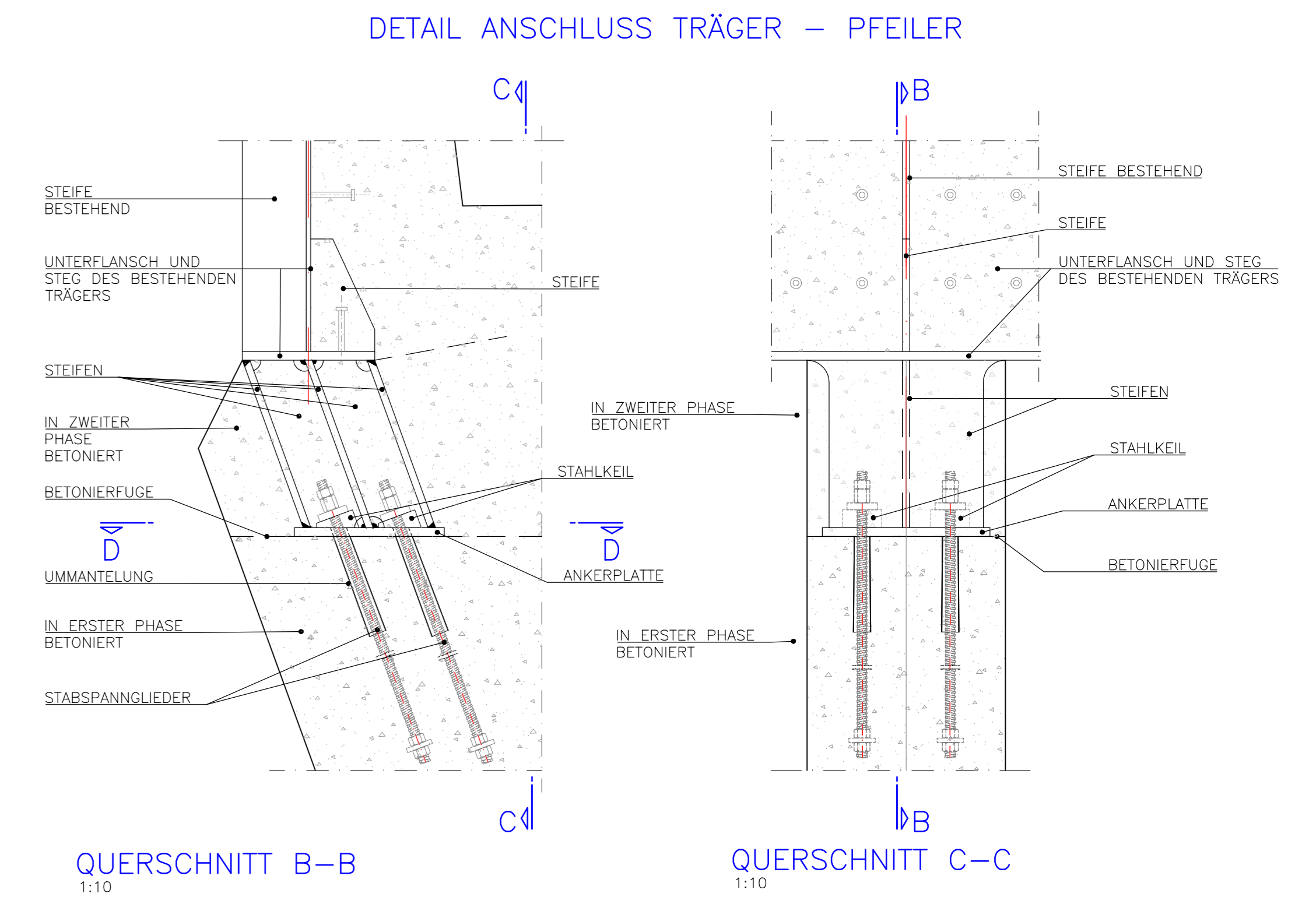
LÄNGSSCHNITT WIDERLAGER  
1:50



ANSICHT FLÜGELMAUER 1  
1:50

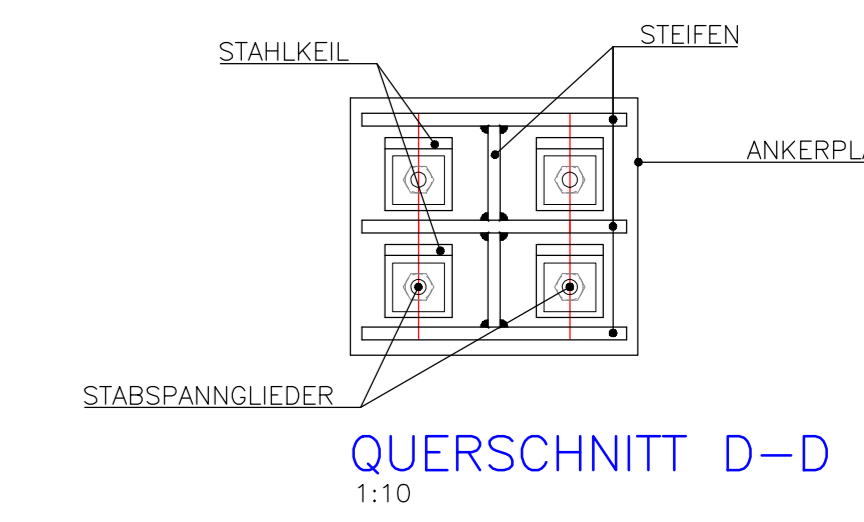


ANSICHT FLÜGELMAUER 2  
1:50



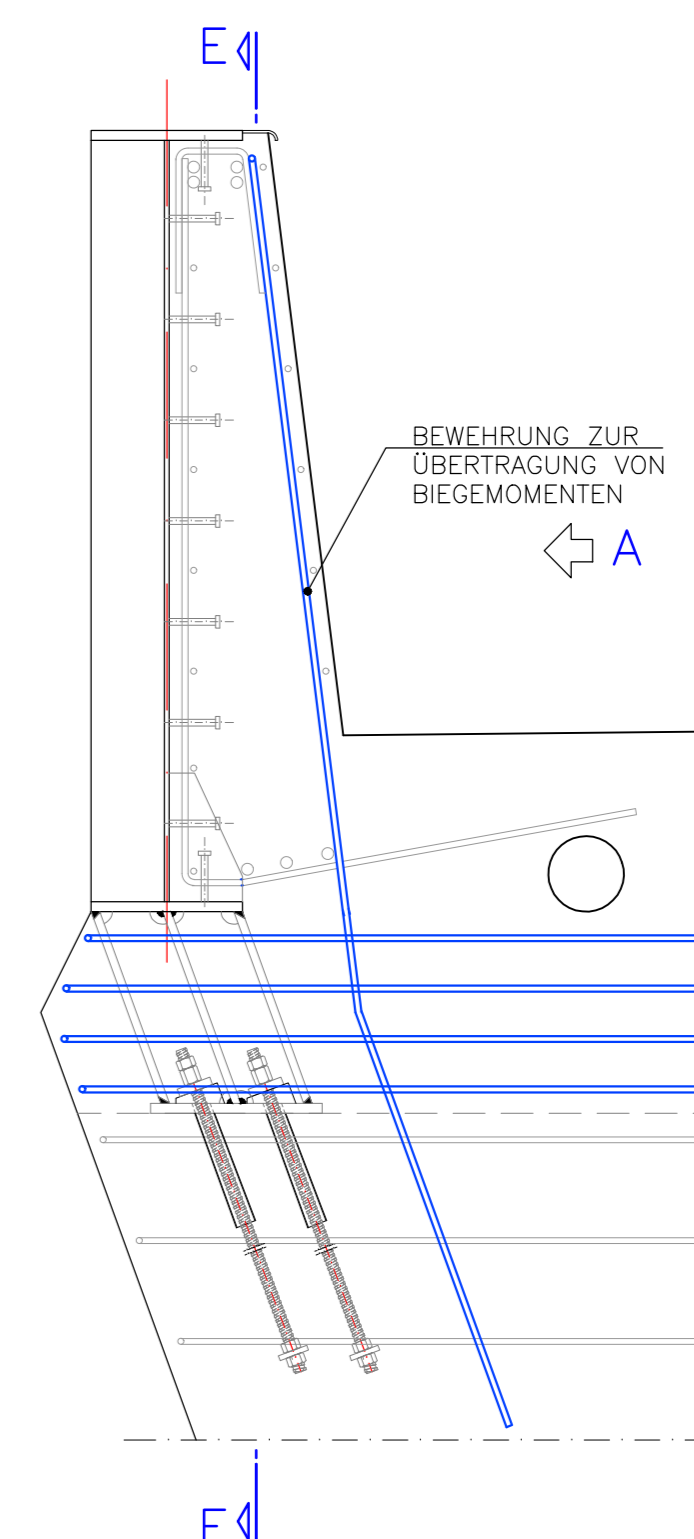
QUERSCHNITT B-B  
1:10

QUERSCHNITT C-C  
1:10

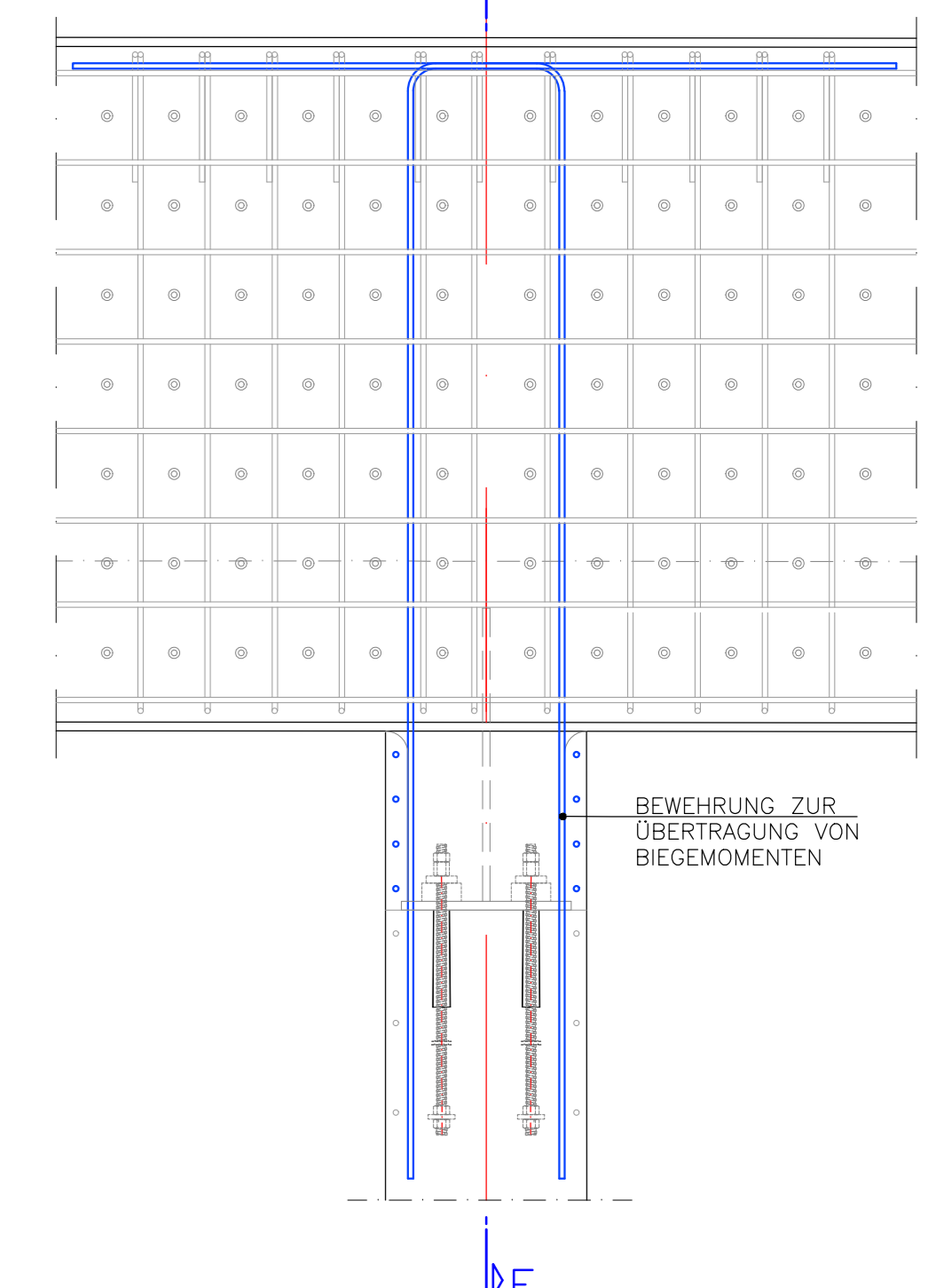


QUERSCHNITT D-D  
1:10

DETAIL ANSCHLUSS TRÄGER - PFEILER  
ÜBERTRAGUNGSBEWEHRUNG



QUERSCHNITT F-F  
1:15



QUERSCHNITT E-E  
1:15