

NEUES SCHULHAUS UND TURNHALLE:

GF BERECHNUNG NACH SIA 416	
1.UG	2'210 m2
EG	246 m2
1.OG	1'296 m2

TOTAL: 3'752 m2

AGF BERECHNUNG NACH SIA 416:	
2.OG	211 m2

TOTAL: 211 m2

KINDERGARTEN

GF BERECHNUNG NACH SIA 416	
1.UG	0 m2
EG	405 m2
1.OG	258 m2

TOTAL: 663 m2

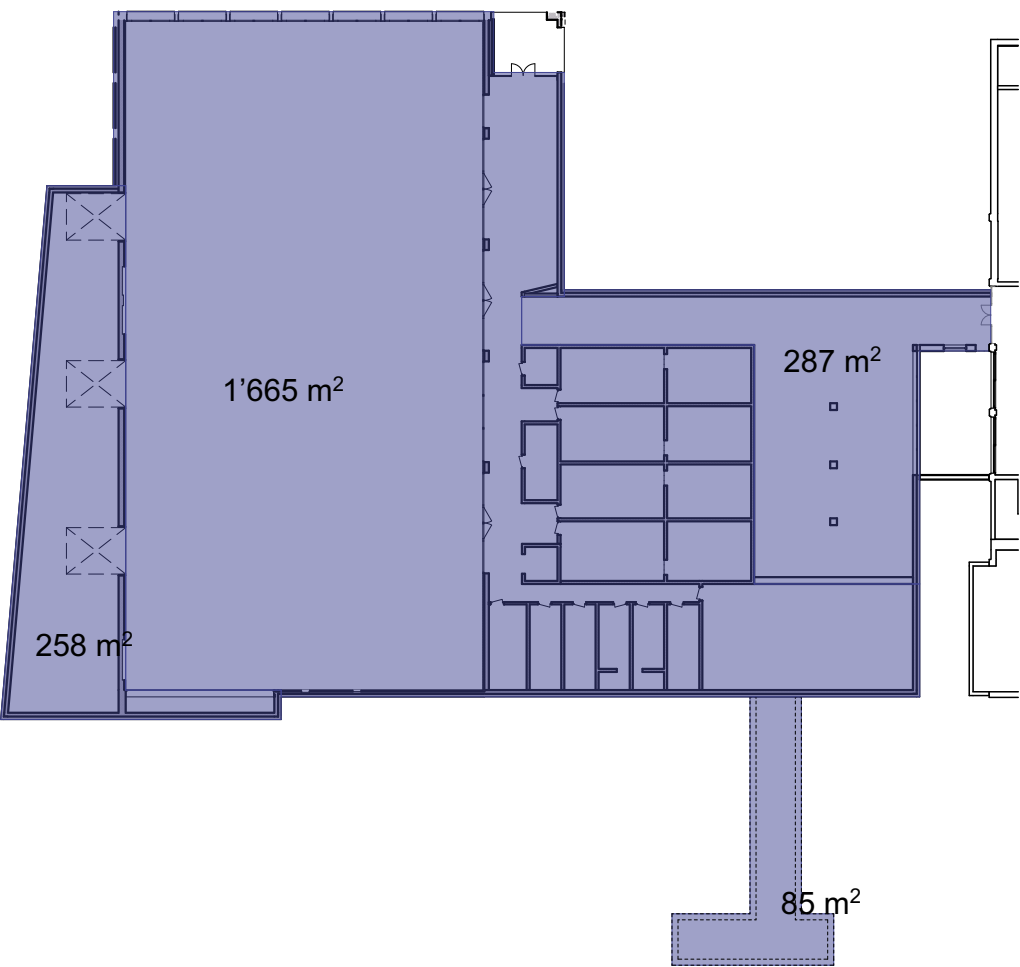
AGF BERECHNUNG NACH SIA 416:	
2.OG	164 m2

TOTAL: 164 m2

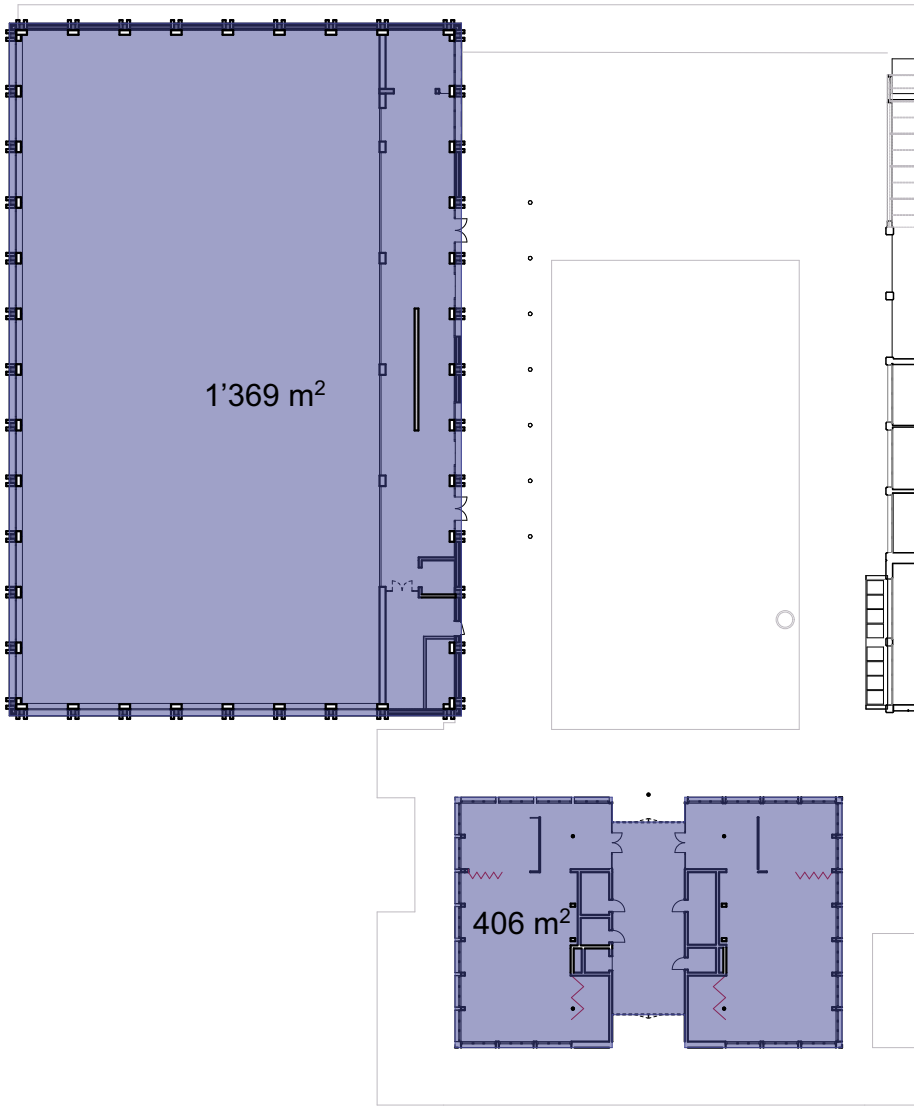
TOTAL KINDERGARTEN + SCHULHAUS UND TURNHALLE

GF TOTAL  
3'752 m2 + 663 m2 = 4415 m3

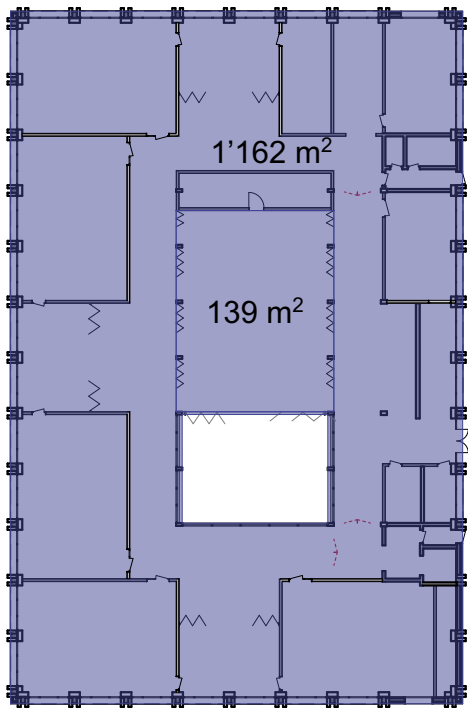
AGF TOTAL  
211 m2 + 164 m2 = 375 m3



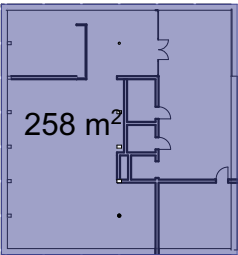
Untergeschoss



Erdgeschoss



1.Obergeschoss



**NEUES SCHULHAUS UND TURNHALLE:**  
GV BERECHNUNG NACH SIA 416:

1.UG	1'665 m2 x 6.25 m	= 10'406 m3
	258 m2 x 5.10 m	= 1'316 m3
	287 m2 x 4.67 m	= 1'340 m3
	85 m2 x 2.00 m	= 170 m3
EG	1'369 m2 x 4.70 m	= 6'434 m3
1.OG	1'162 m2 x 4.52 m	= 5'252 m3
	139 m2 x 7.54 m	= 1'048 m3

**TOTAL:** = 25'966 m3

**KINDERGARTEN**

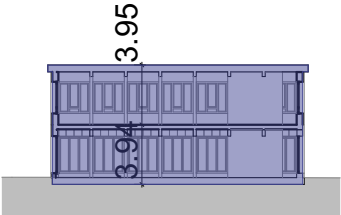
GV BERECHNUNG NACH SIA 416:

EG	406 m2 x 3.94 m	= 1'600m3
1.OG	258 m2 x 3.95 m	= 1'019 m3

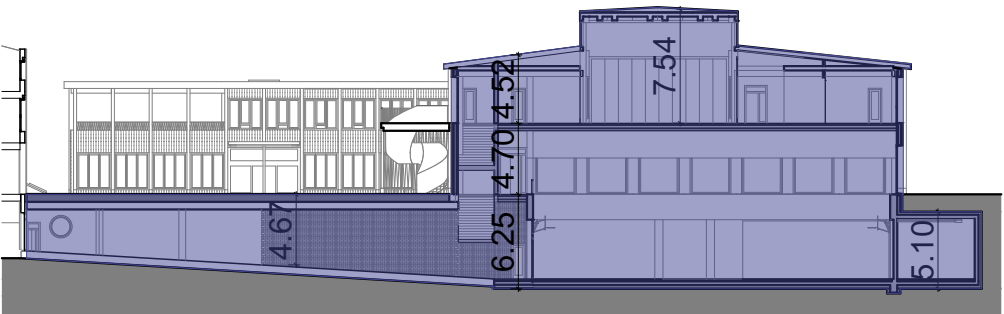
**TOTAL:** = 2'619 m3

**TOTAL KINDERGARTEN + SCHULHAUS UND TURNHALLE**

**GV TOTAL**  
25'966 m2 + 2'619 m2 = 28'585 m3



Schnitt Kindergarten



Schnitt Schulhaus und Turnhalle