

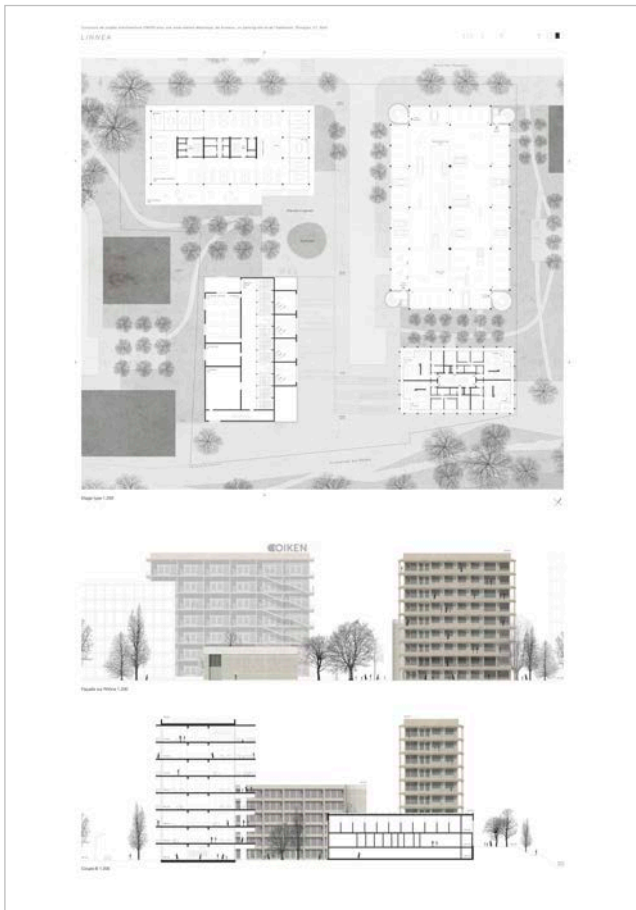
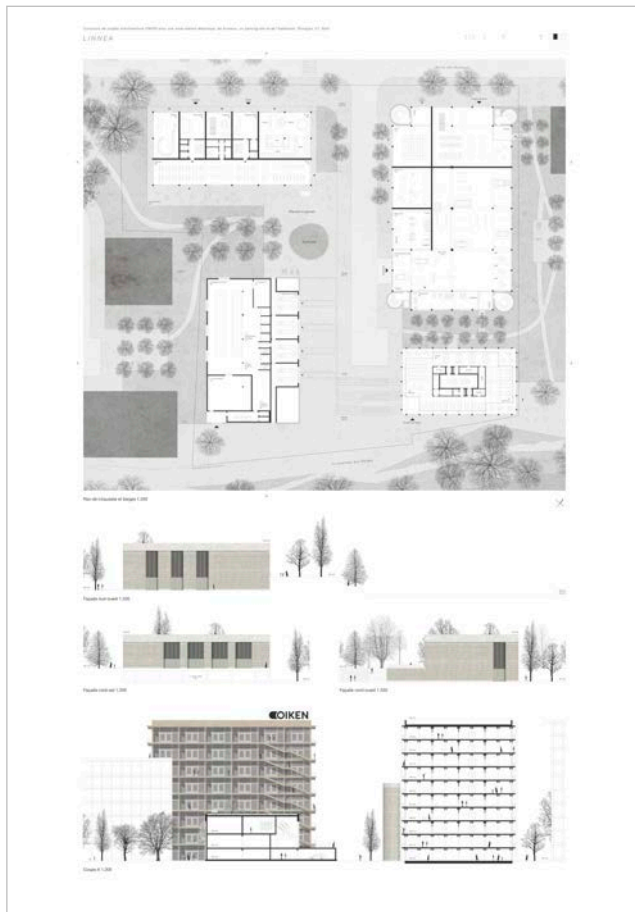
Projets non primés

01 LINNEA

APOLINARIO SOARES sàrl
LAUSANNE

collaborateurs:
Apolinario Soares
Arthur Lutzelschwab





03 CINQUIÈME SOLEIL

ATELIER CHARVOZ ARCHITECTES SIA &
ATELIER MOJO ARCHITECTURE
SION

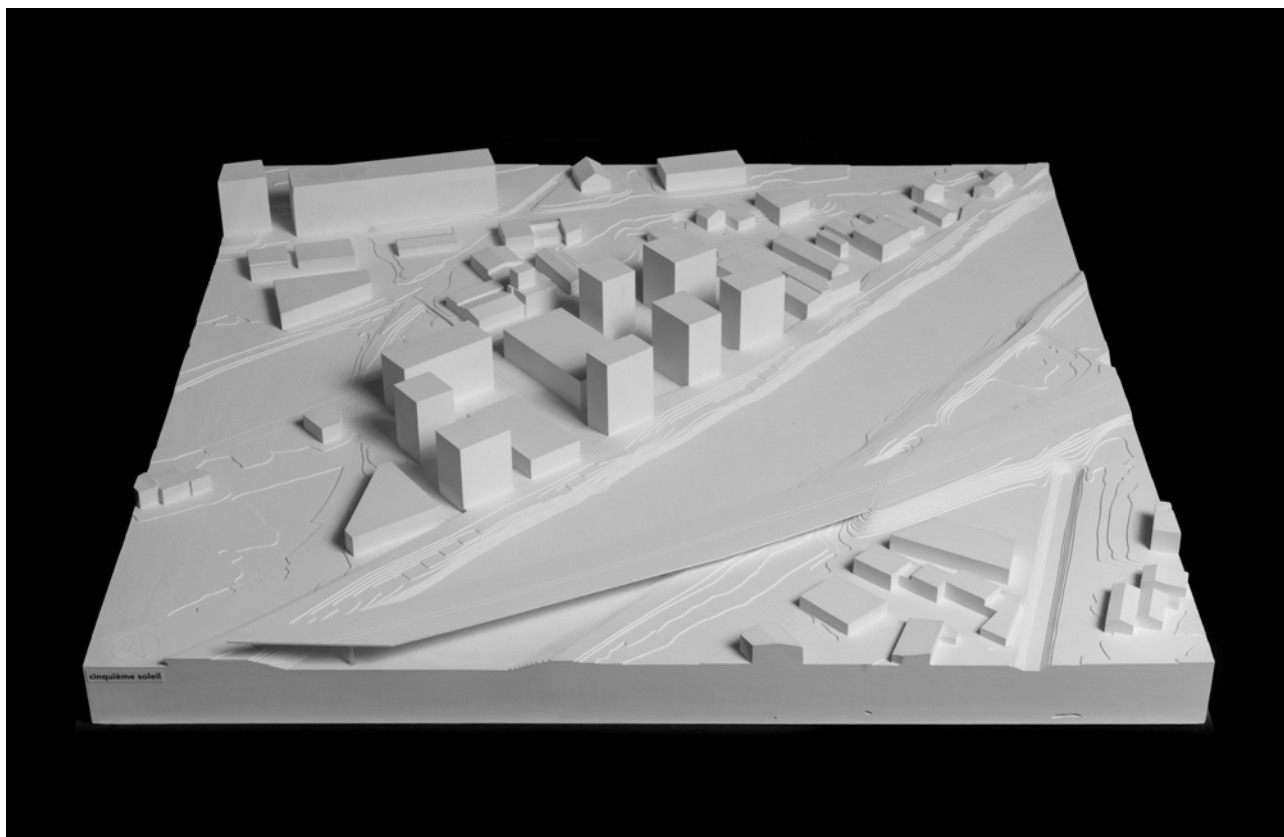
collaborateurs:

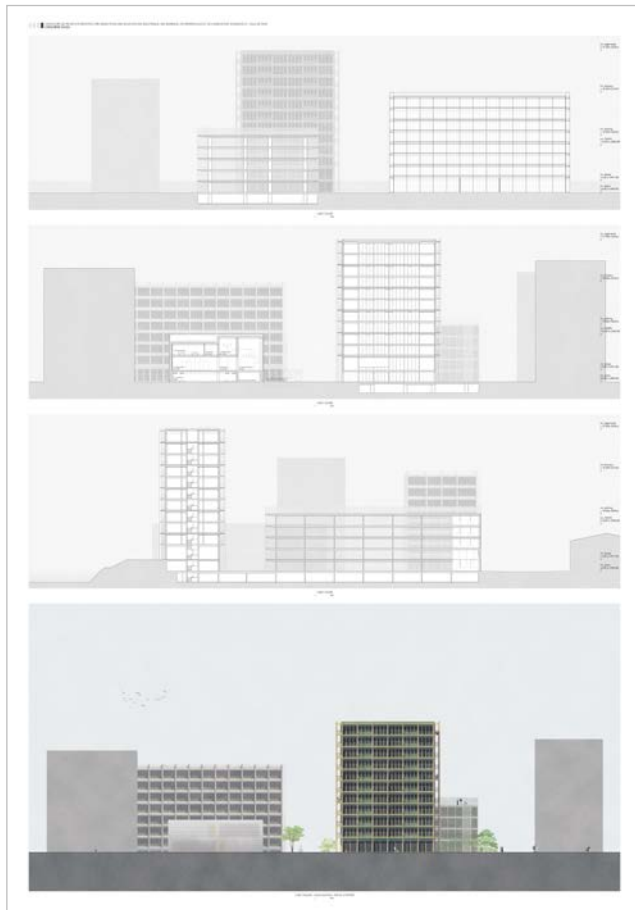
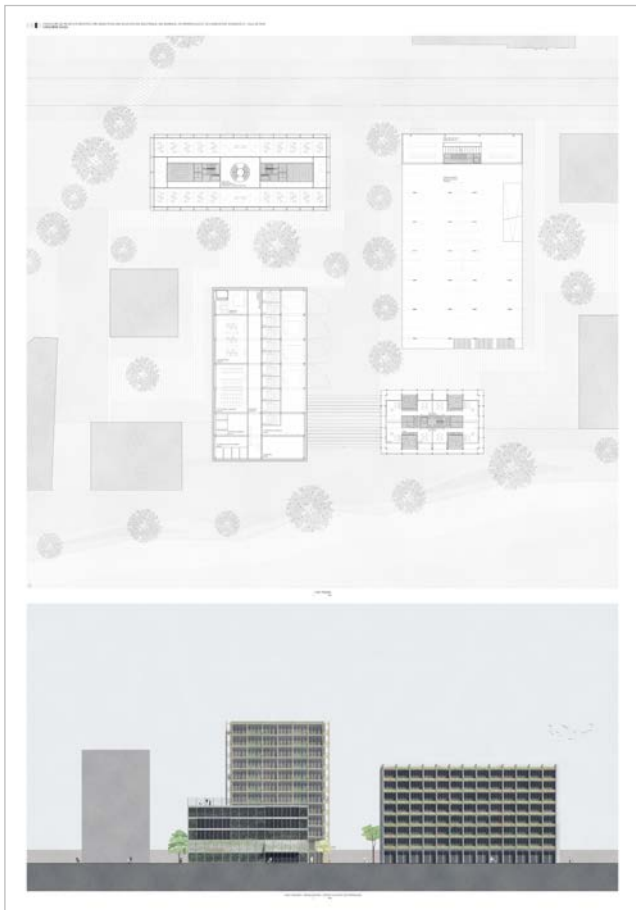
Djavan Cardona

Lionel Ballmer

Sebastien Bourgeois

Bastien Charvoz





07 OïKOS

bunq SA
NYON

collaborateurs:

Laurent Gaille

Philippe Gloor

Julien Grisel

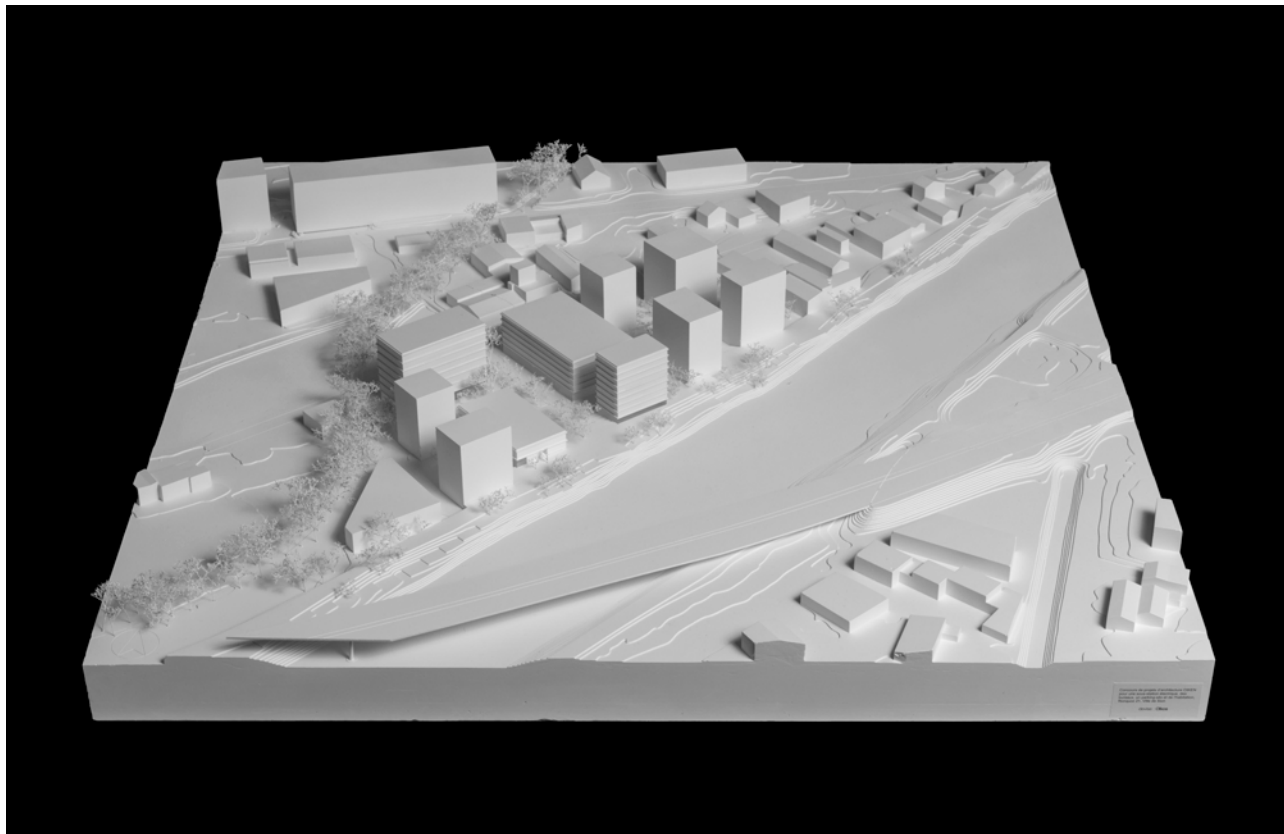
Cyril Lecoultré

Michele Di Matteo

Frédéric Frank

Olivier Galletti

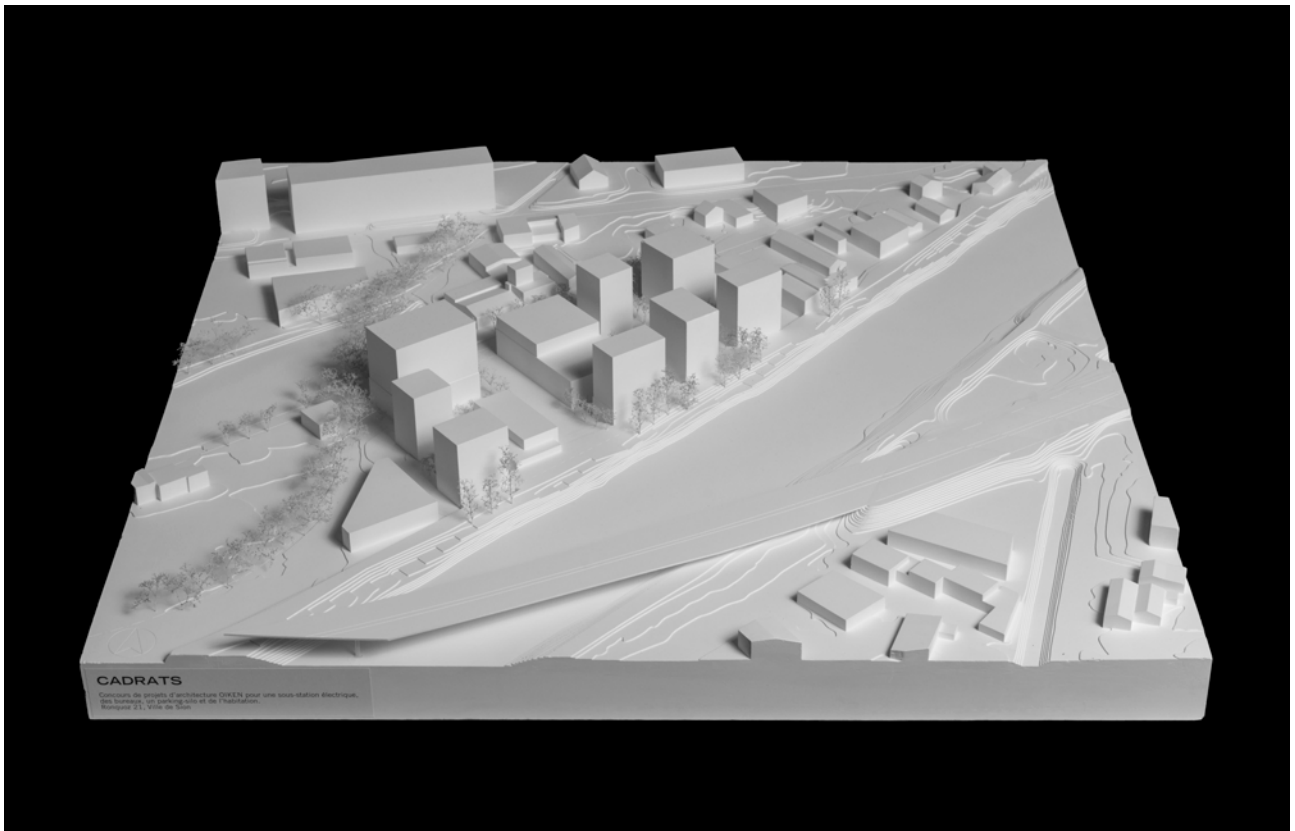
Agathe Caviale



08 CADRATS

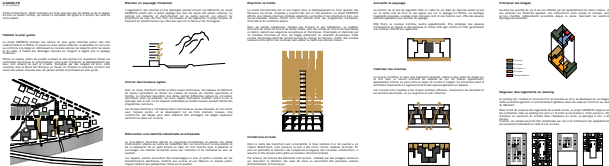
LR ARCHITECTES SARL
LAUSANNE

collaborateurs:
Olivier Regazzoni
Clement Cattin
Gilda Gysin
Etienne Moulin



CADRATS

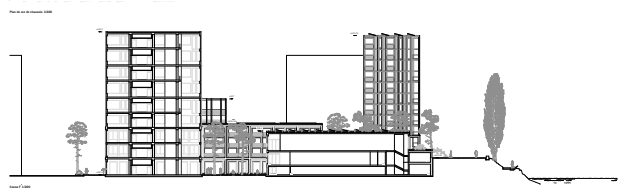
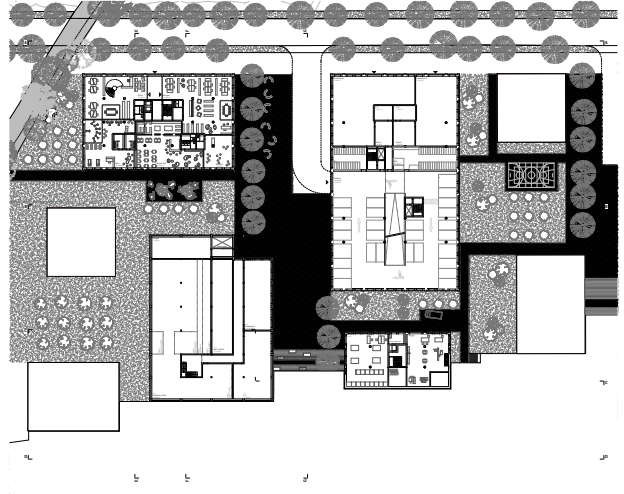
Concours de projets d'architecture OIKEN pour une sous-station électrique, des bureaux, un parking-silo et de l'habitation.
Ronquoz 21, Ville de Sion



© Phasiprom

CADRATS

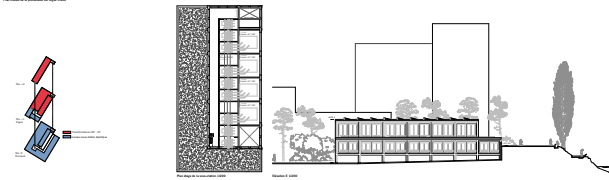
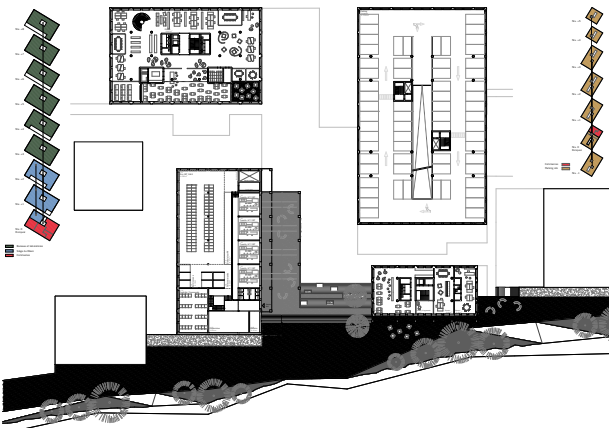
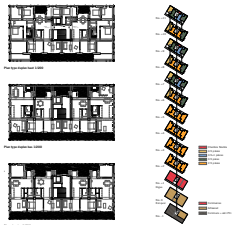
Concours de projets d'architecture OIKEN pour une sous-station électrique, des bureaux, un parking-silo et de l'habitation.
Ronquoz 21, Ville de Sion



© Phasiprom

CADRATS

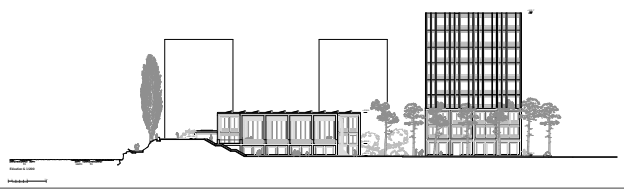
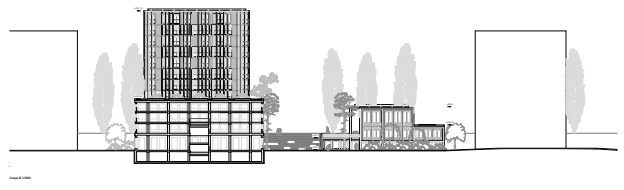
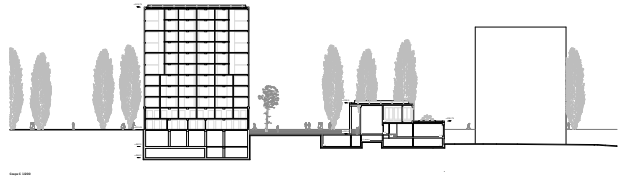
Concours de projets d'architecture OIKEN pour une sous-station électrique, des bureaux, un parking-silo et de l'habitation.
Ronquoz 21, Ville de Sion



© Phasiprom

CADRATS

Concours de projets d'architecture OIKEN pour une sous-station électrique, des bureaux, un parking-silo et de l'habitation.
Ronquoz 21, Ville de Sion



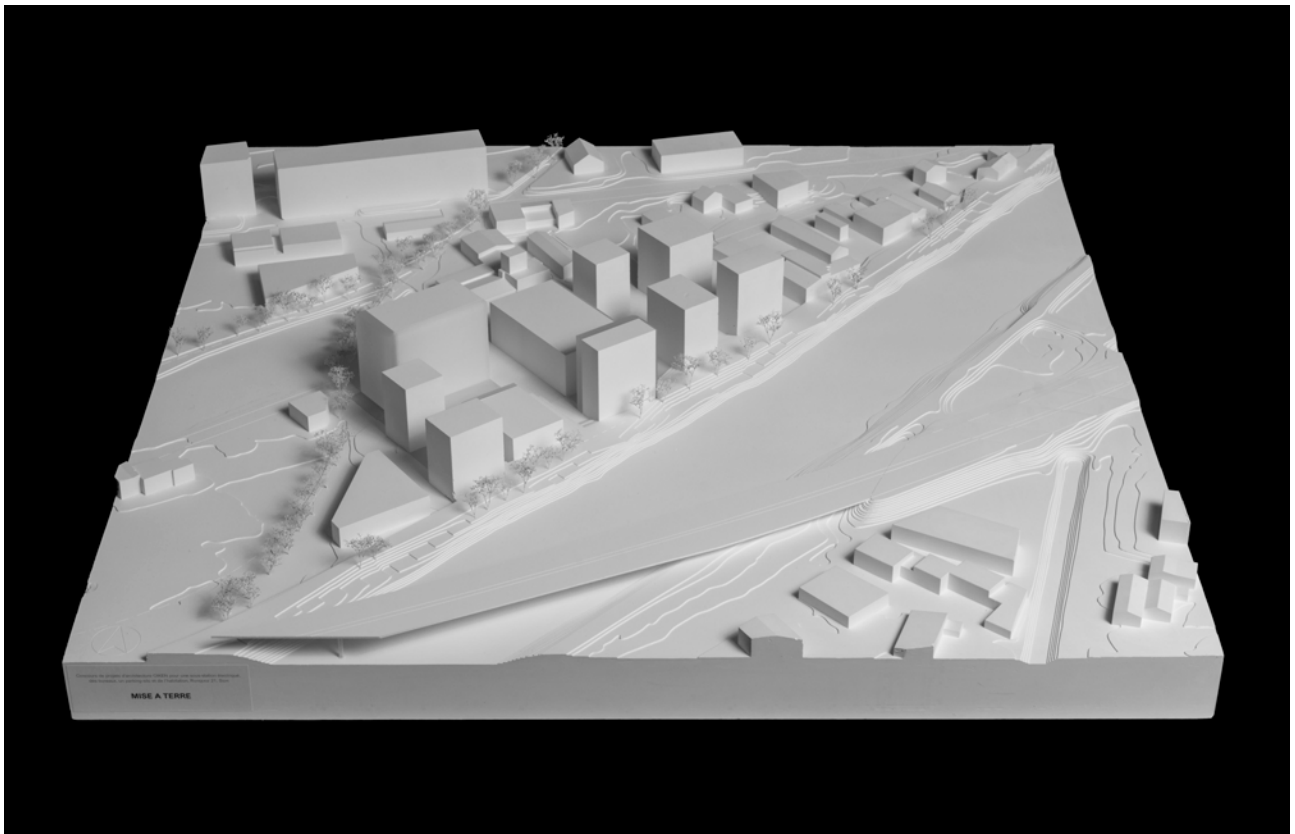
© Phasiprom

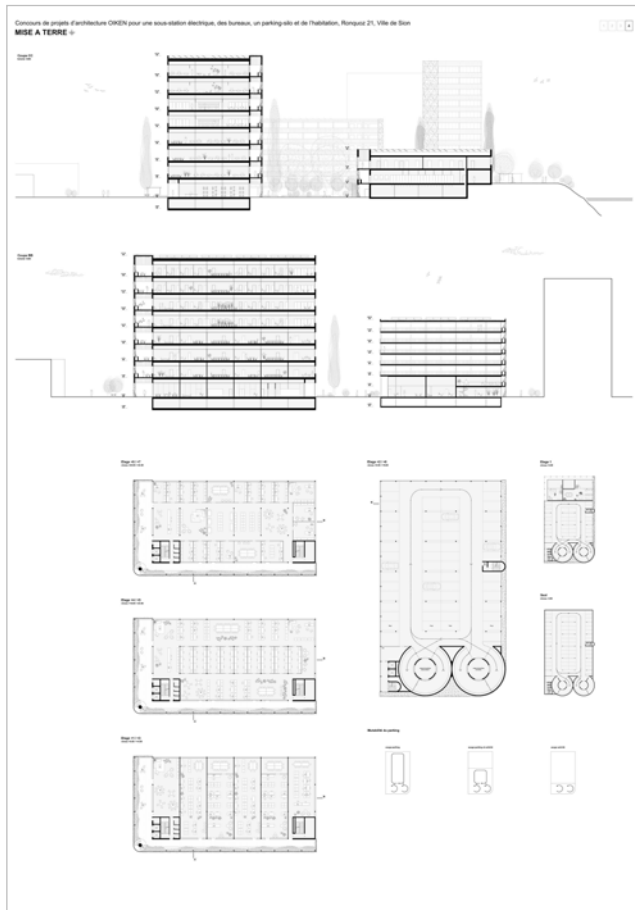
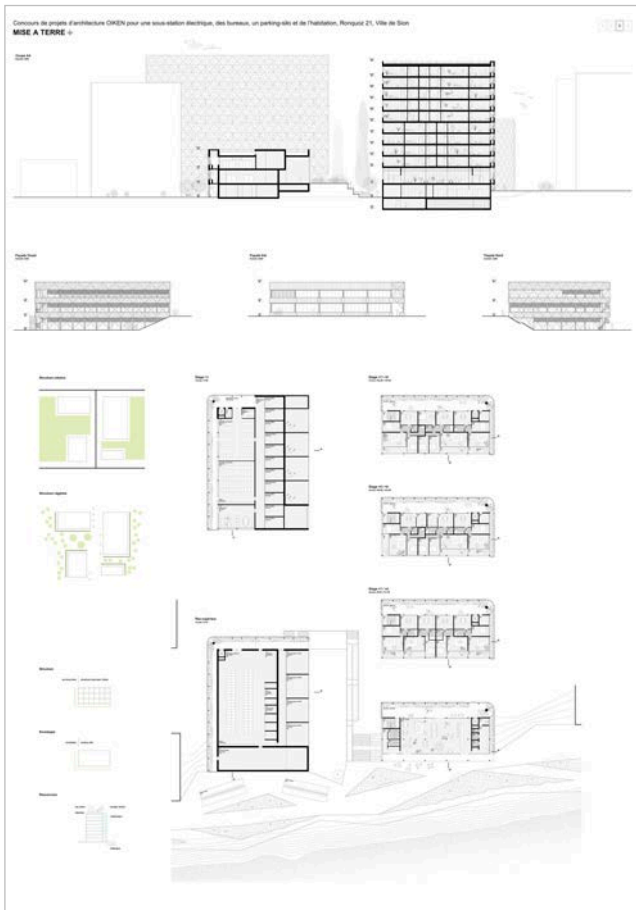
09 MISE À TERRE

atelier iT sàrl architectes hes epfl
MARTIGNY

collaborateurs:
Martin Latham
Nicolas Coutaz
Pierre Epiney
Lionel Decombaz

Pass-Age architectes paysagistes
Alban Carron
Florent Lièvre

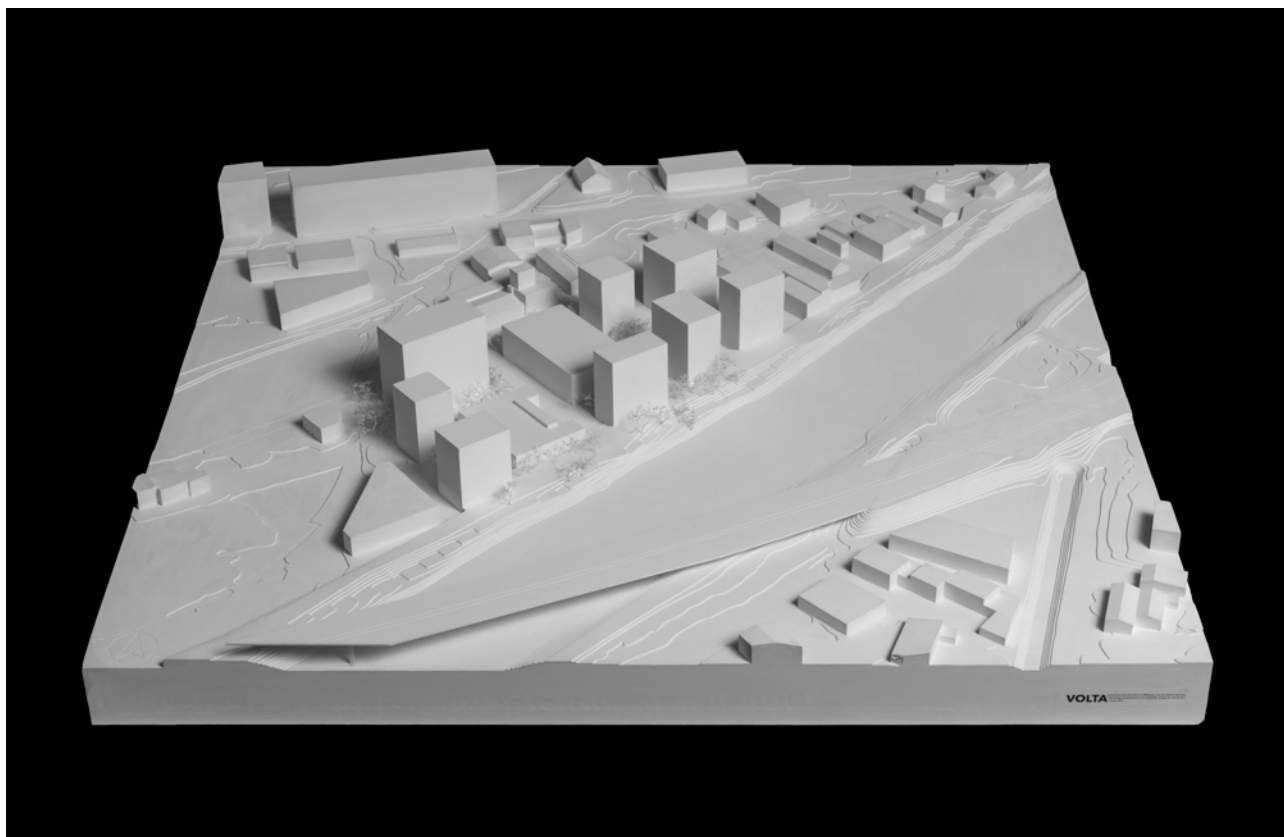


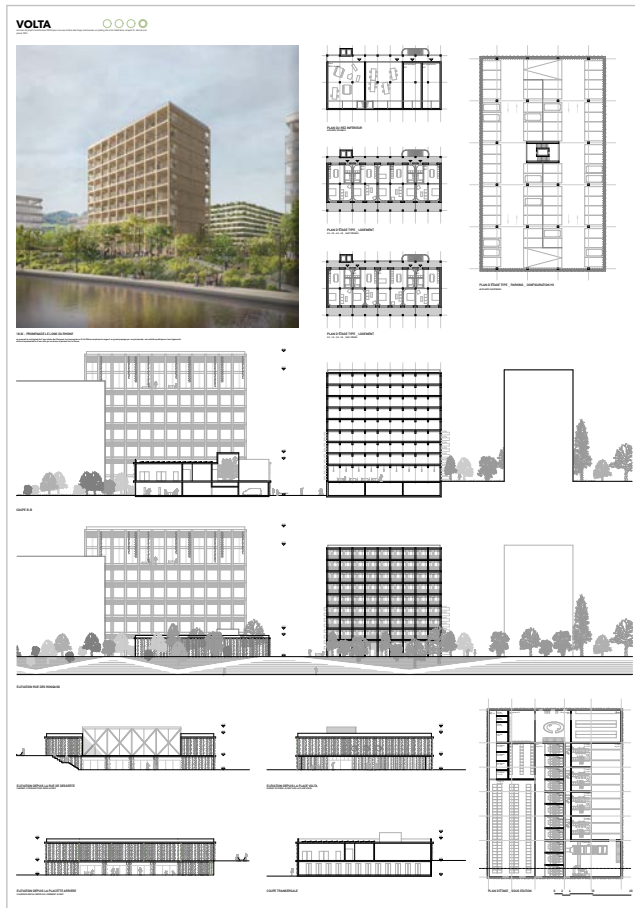
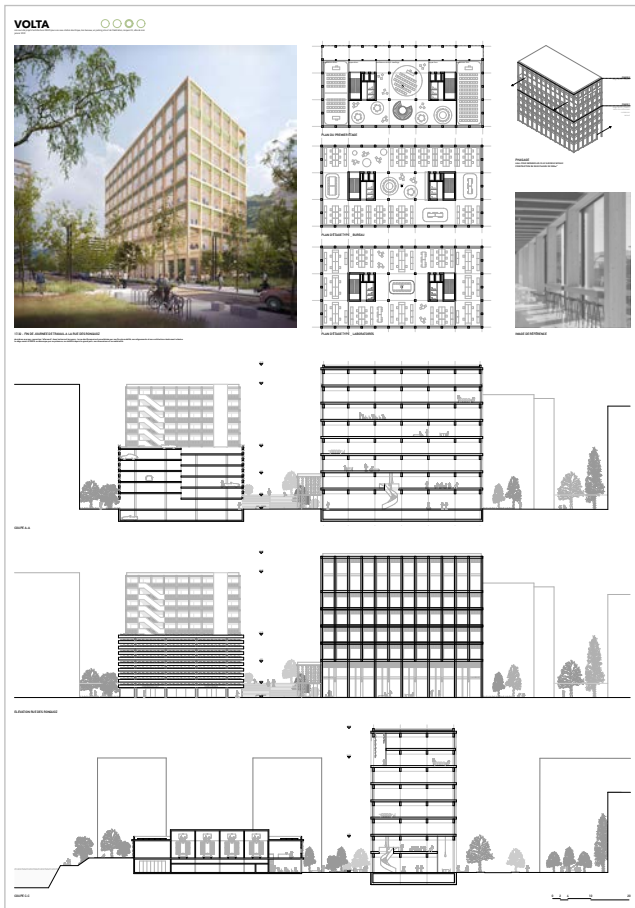
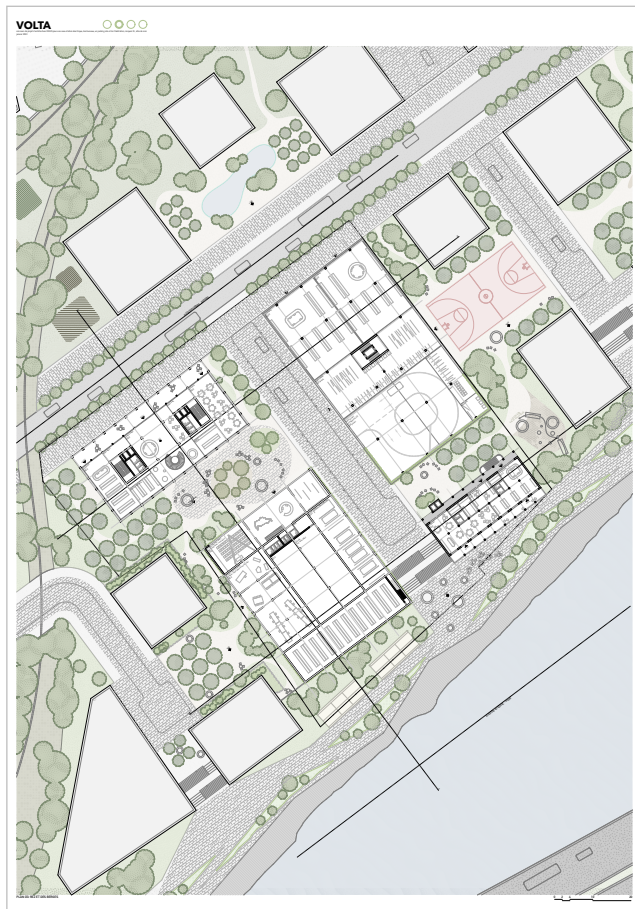


10 VOLTA

R2A architectes Sàrl
SION

collaborateurs:
Jérôme Rudaz
Renaud Rudaz
Gregor Watson





12 Downtown Boogie

GayMenzel Sàrl
MONTHEY

collaborateurs:

Götz Menzel

Catherine Gay Menzel

Vincent Fourel

Jeremy Stöcklin

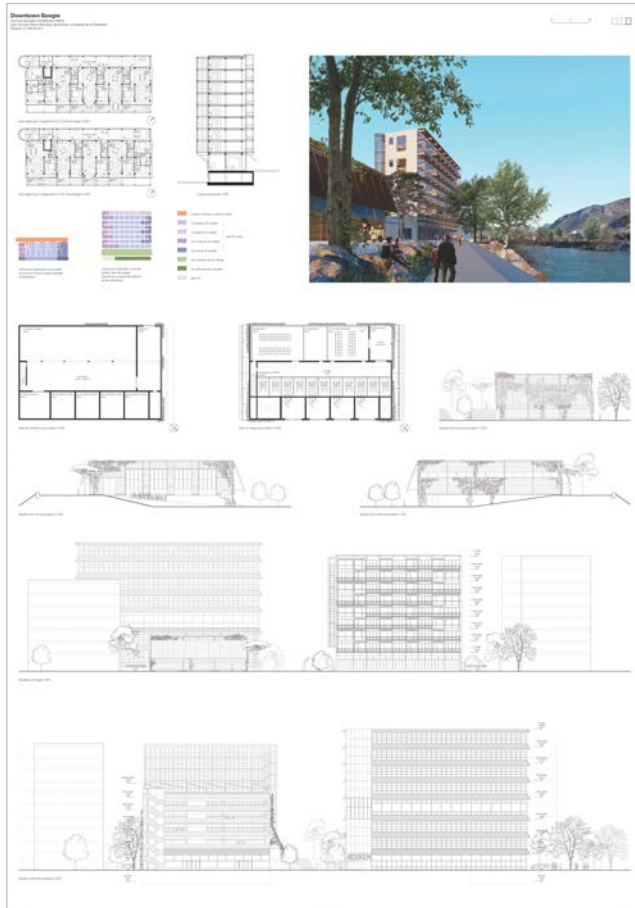
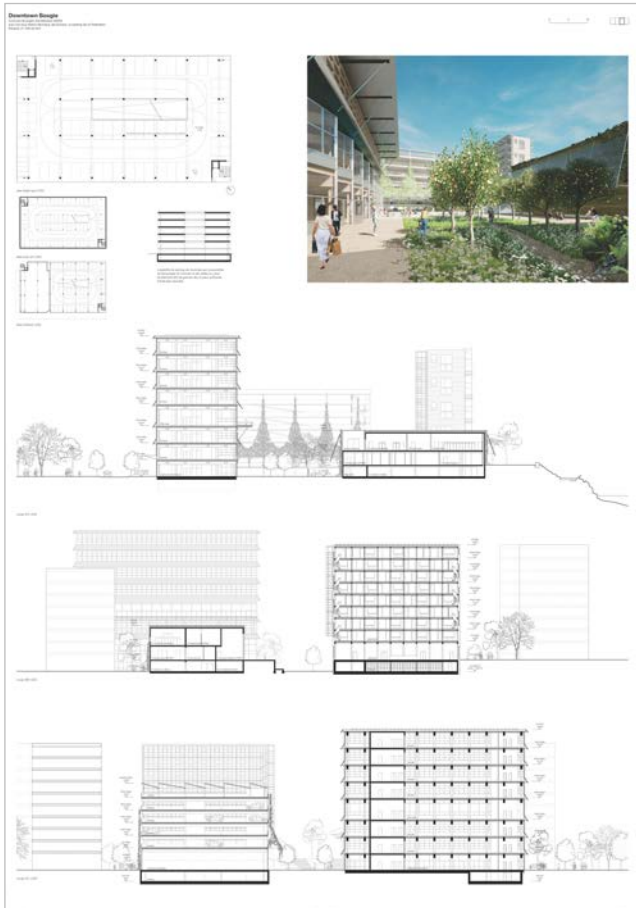
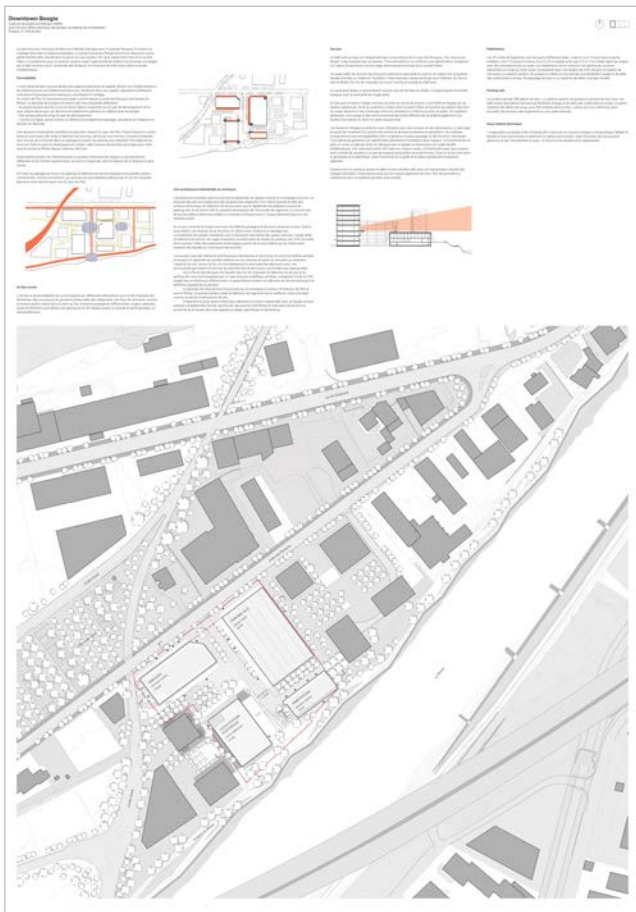
Abigail Riand

Delphine Turin

Angéline Praz

Joana Filipa Duarte Silva





13 THE BEATLES

MIDERI ARCHITEKTEN GmbH
BASEL

collaborateurs:

Neuland Architekturlandschaft

Schnetzer Puskas Ingenieure

Drees & Sommer

Rapp Infra

