

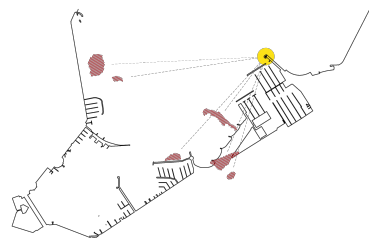
PALAFITTE

Genève et ses palafittes – Cité lacustre par excellence

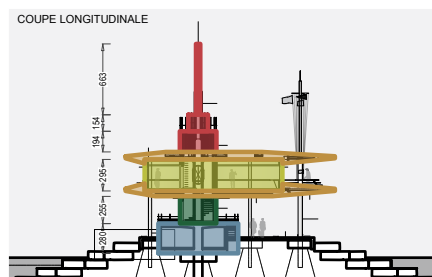
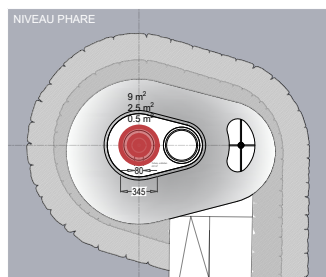
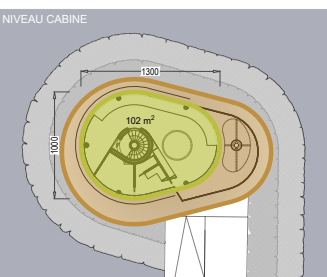
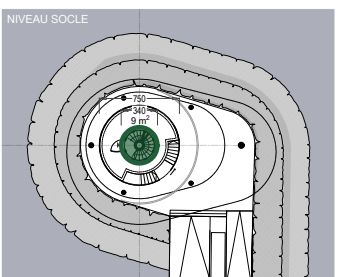
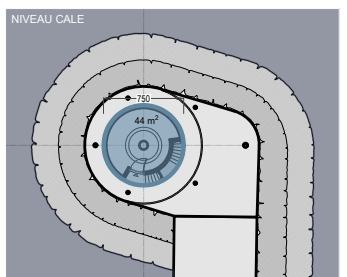
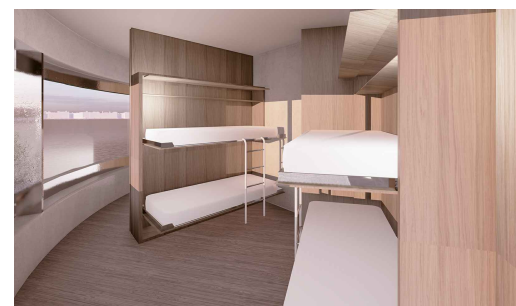
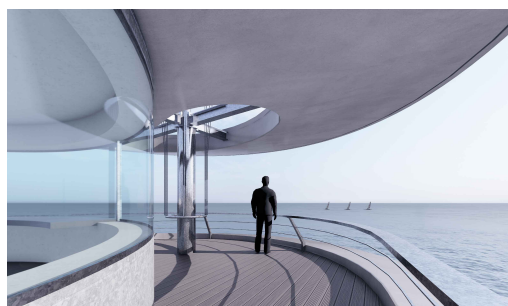
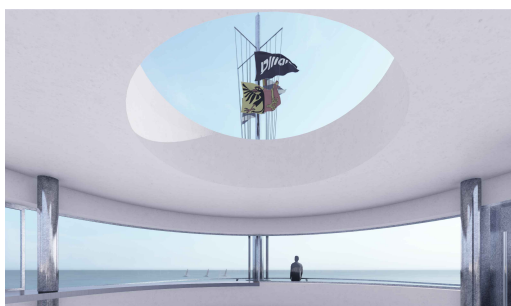
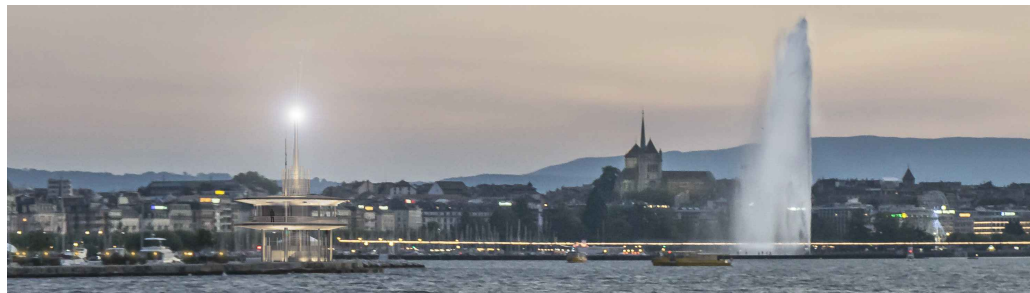


« Vois-tu ce feu lointain trembler sur la colline ?
Par la main de l'amour c'est un phare allumé »

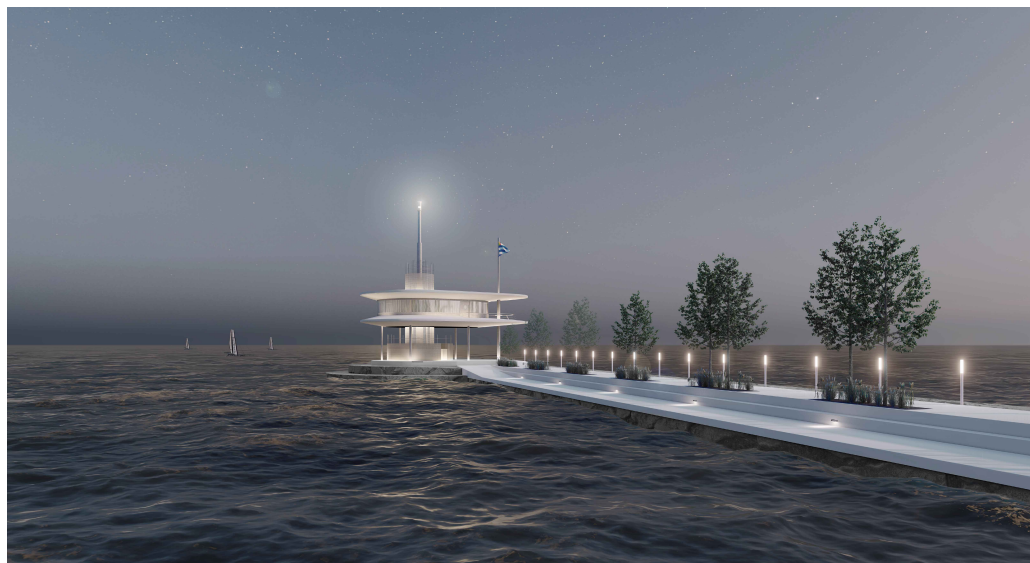
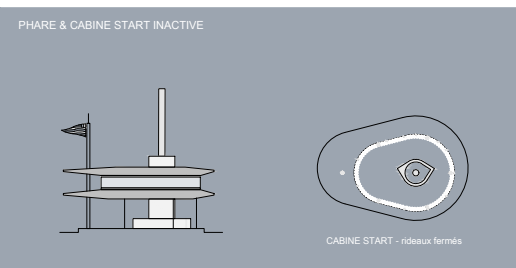
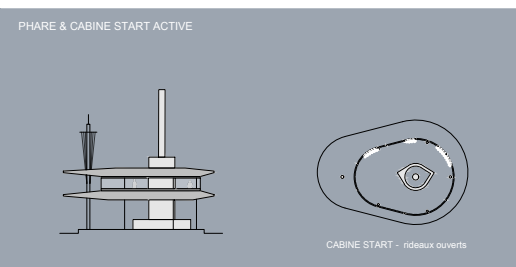
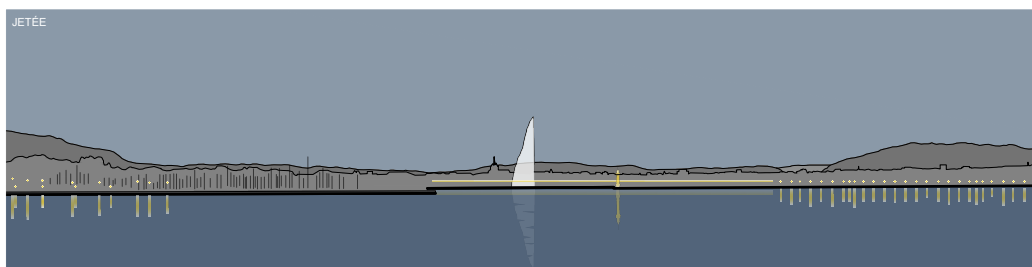
Alphonse de Lamartine

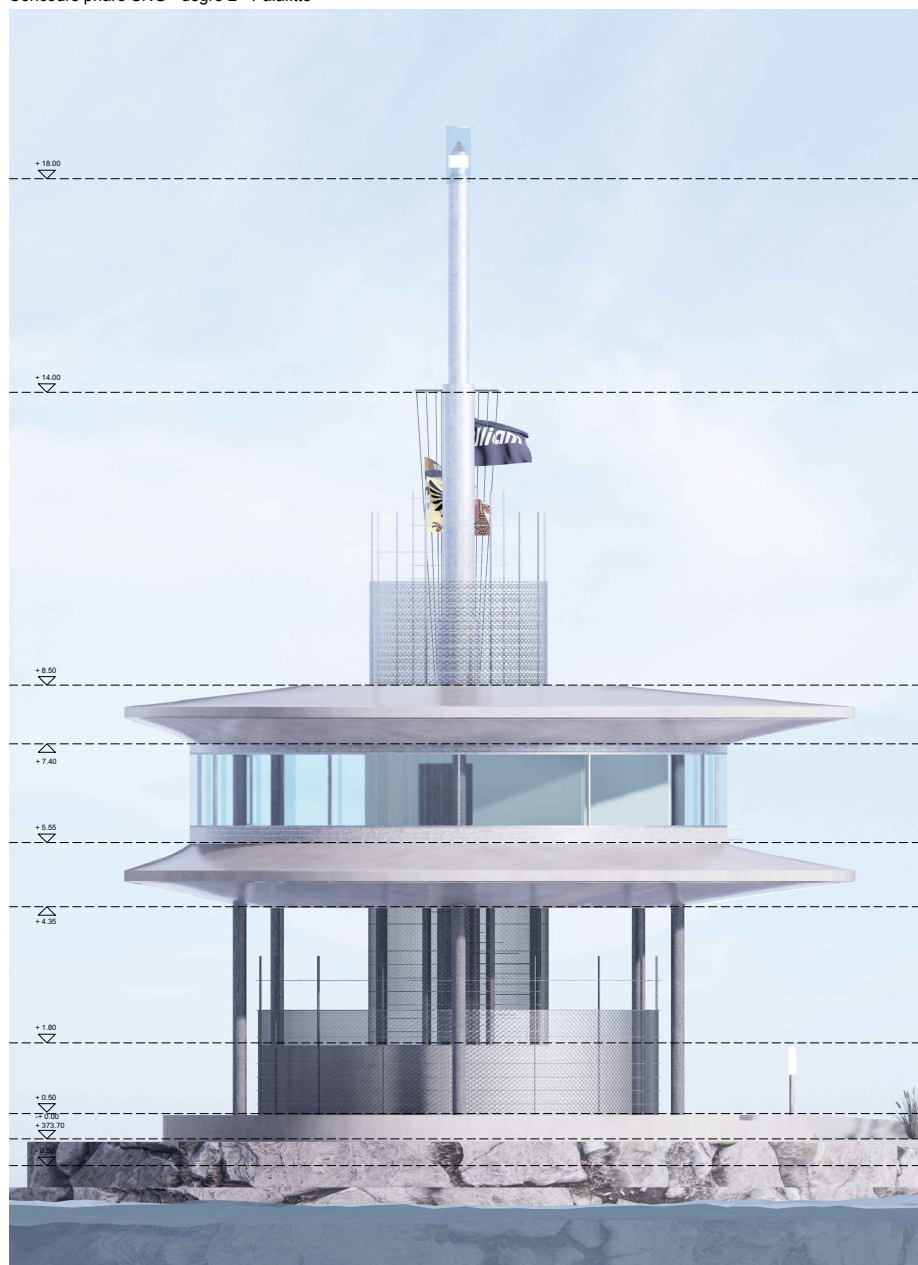


Construit sur pilotis et comme surgi du fond du lac, **LE PHARE DE LA NAUTIQUE** s'inspire des habitations préhistoriques de nos ancêtres les lacustres.

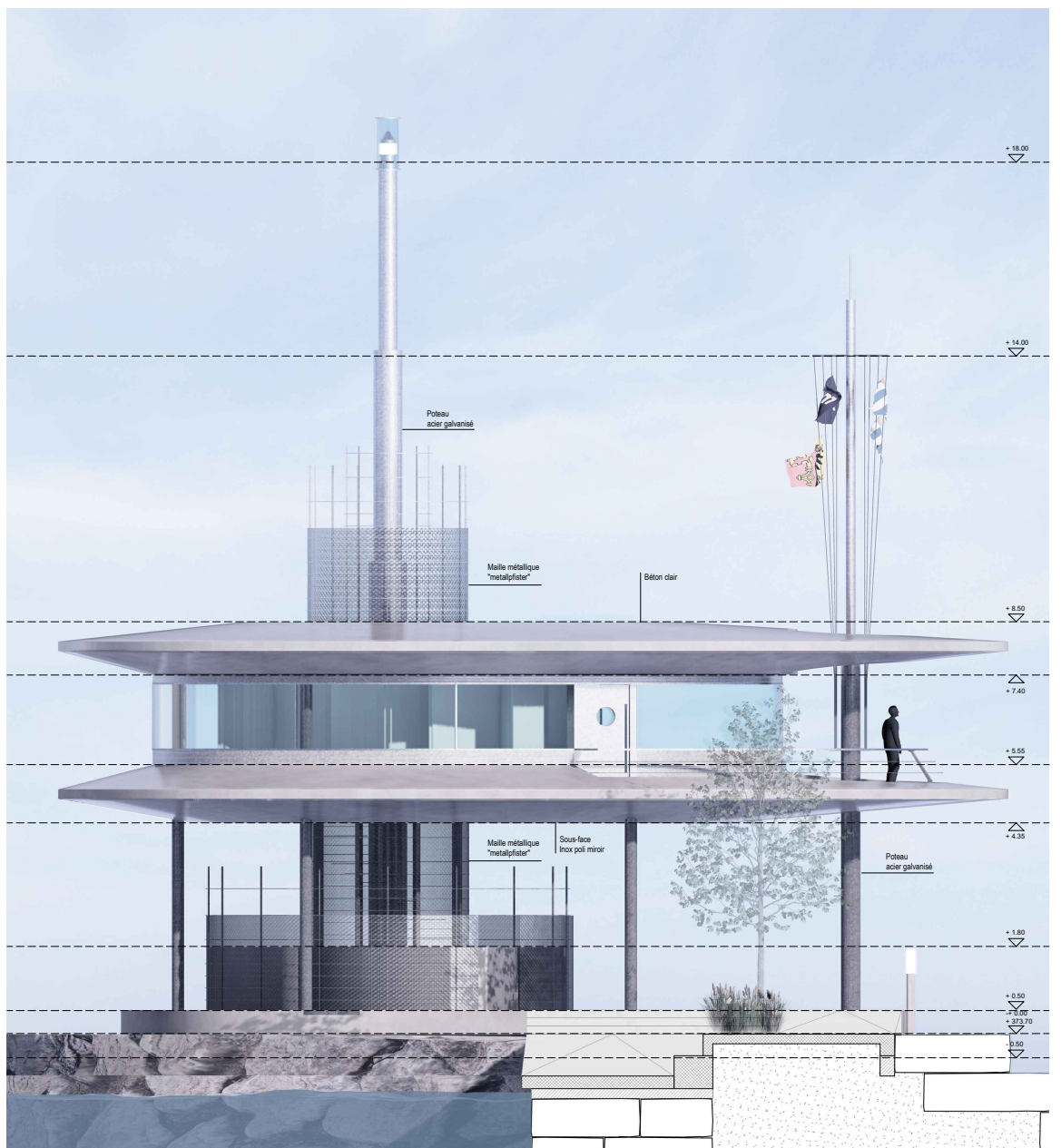


CUBE SIA 116		
	Surface m ²	Volume m ³
Socle	44 x 2.8	= 123 m ³
Escalier	9 x 2.55	= 23 m ³
Cabine	102 x 2.95	= 302 m ³
Dalle inférieure	selon 3D	= 107 m ³
Dalle supérieure	selon 3D	= 66 m ³
Phare inférieur	9 x 1.94	= 18 m ³
Phare intermédiaire	2.5 x 1.54	= 4 m ³
Phare supérieur	0.5 x 6.63	= 7 m ³
TOTAL		= 650 m³

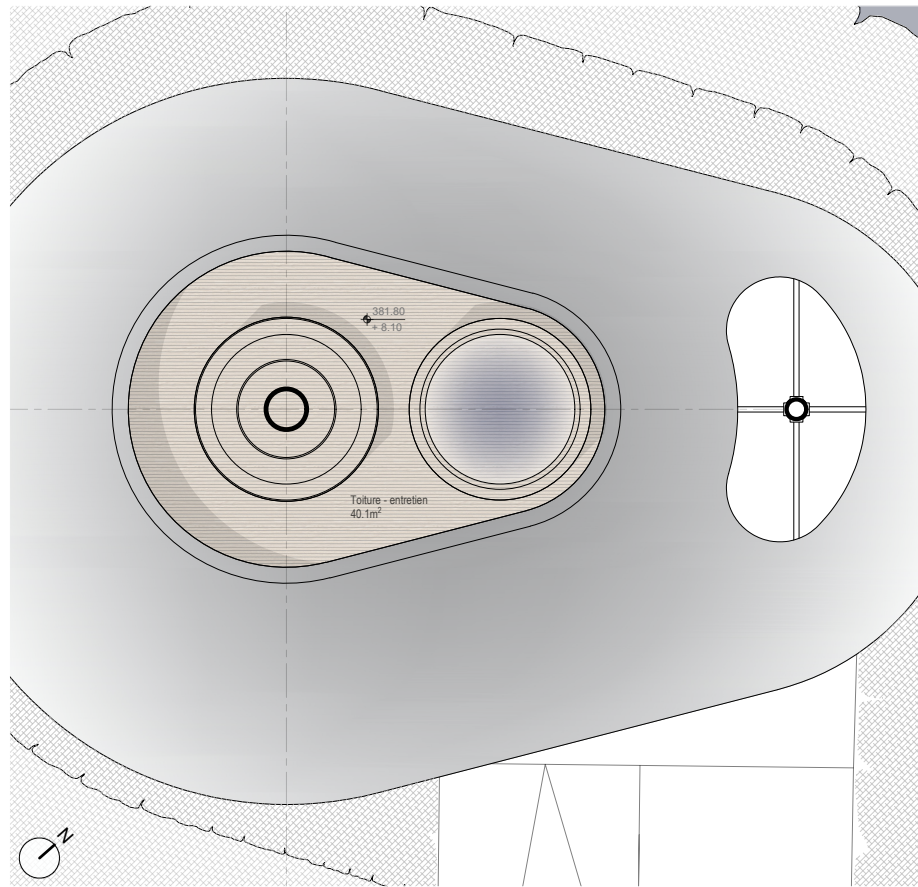




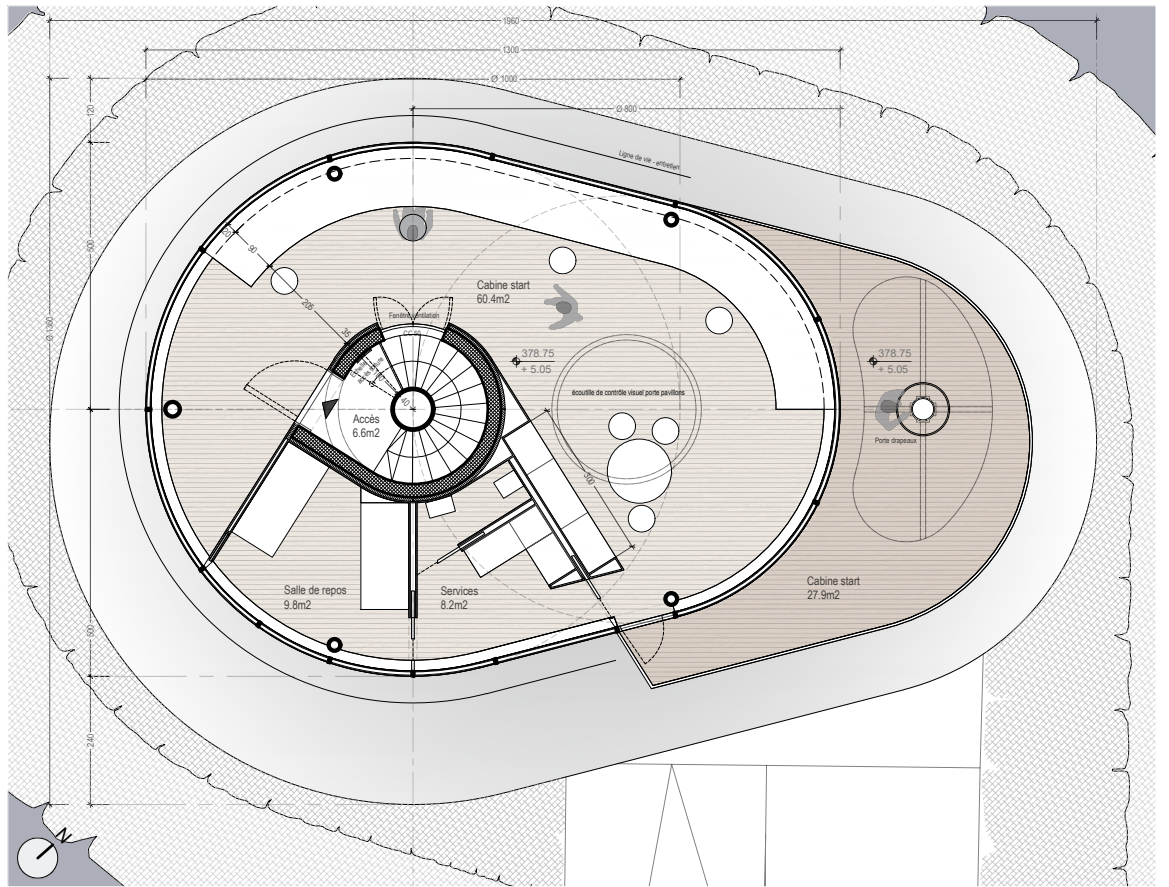
ANGLE DE VUE SUD-OUEST 1/50



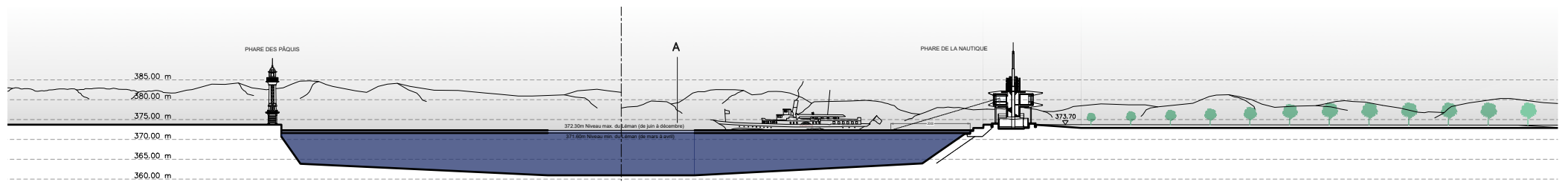
ANGLE DE VUE NORD-OUEST 1/50



TOITURE 1/50



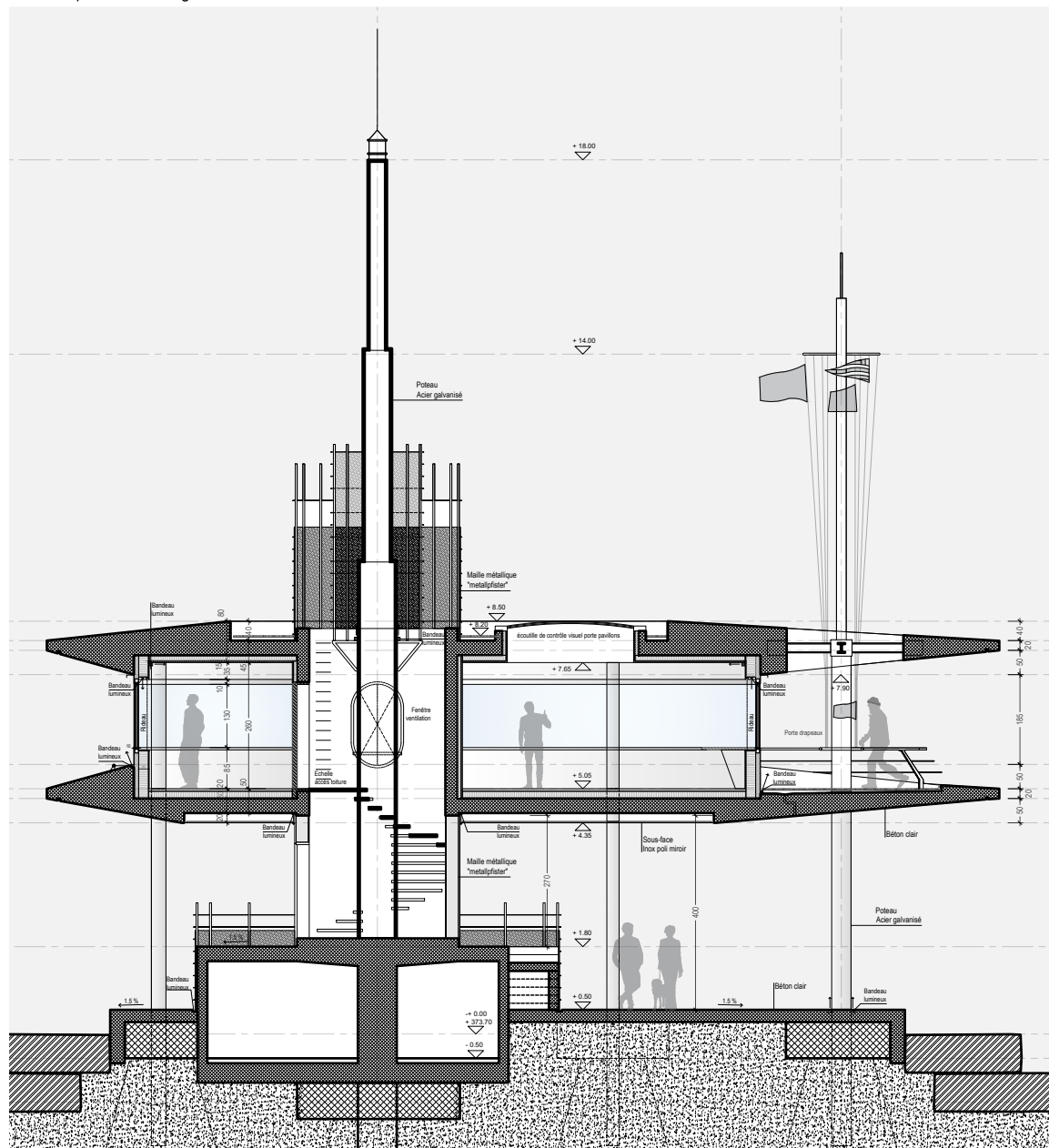
CABINE 1/50



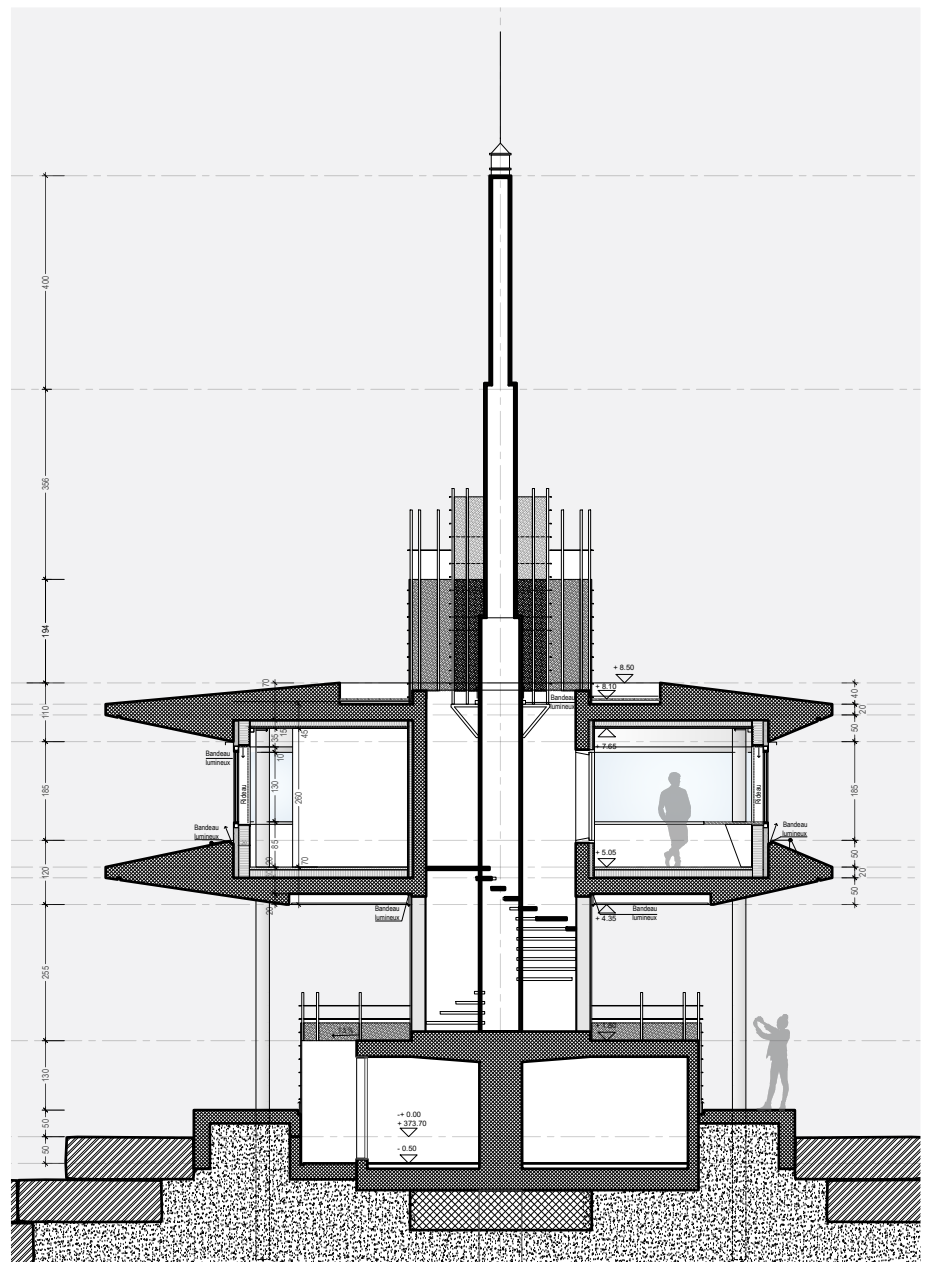
COUPE PAYSAGE 1/500



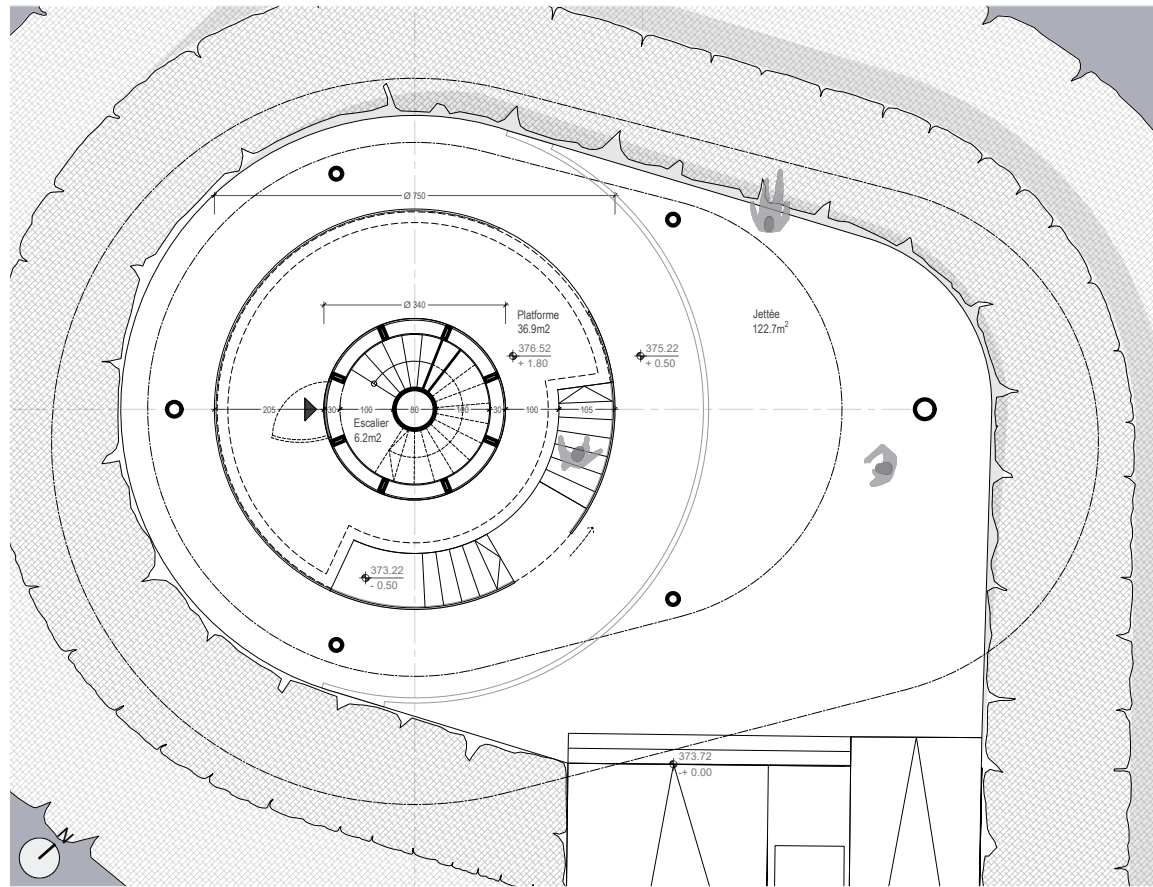
GRAND-ANGLE DIURNE



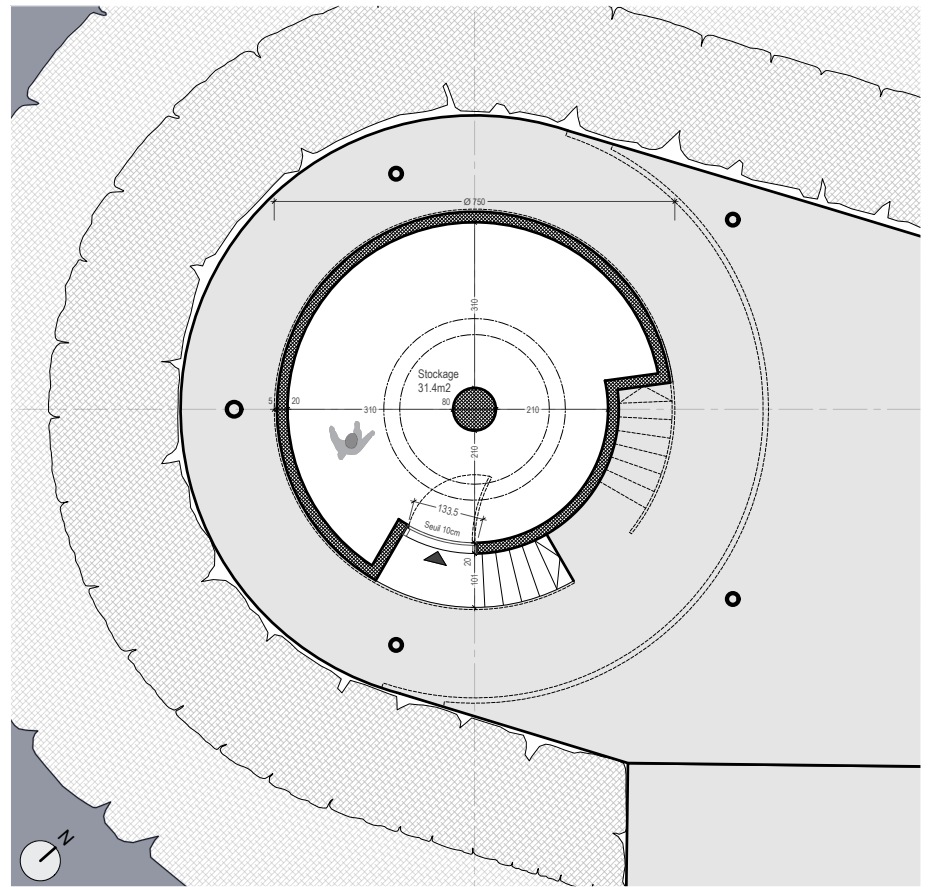
COUPE LONGITUDINALE 1/50



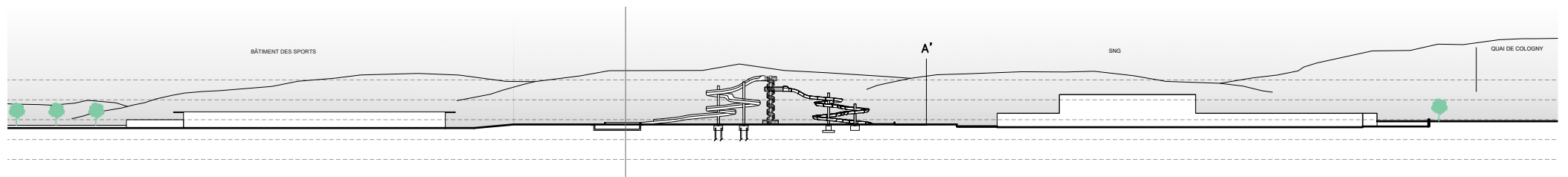
COUPE TRANSVERSALE 1/50



SOCLE 1/50



CALE 1/50



GRAND-ANGLE NOCTURNE