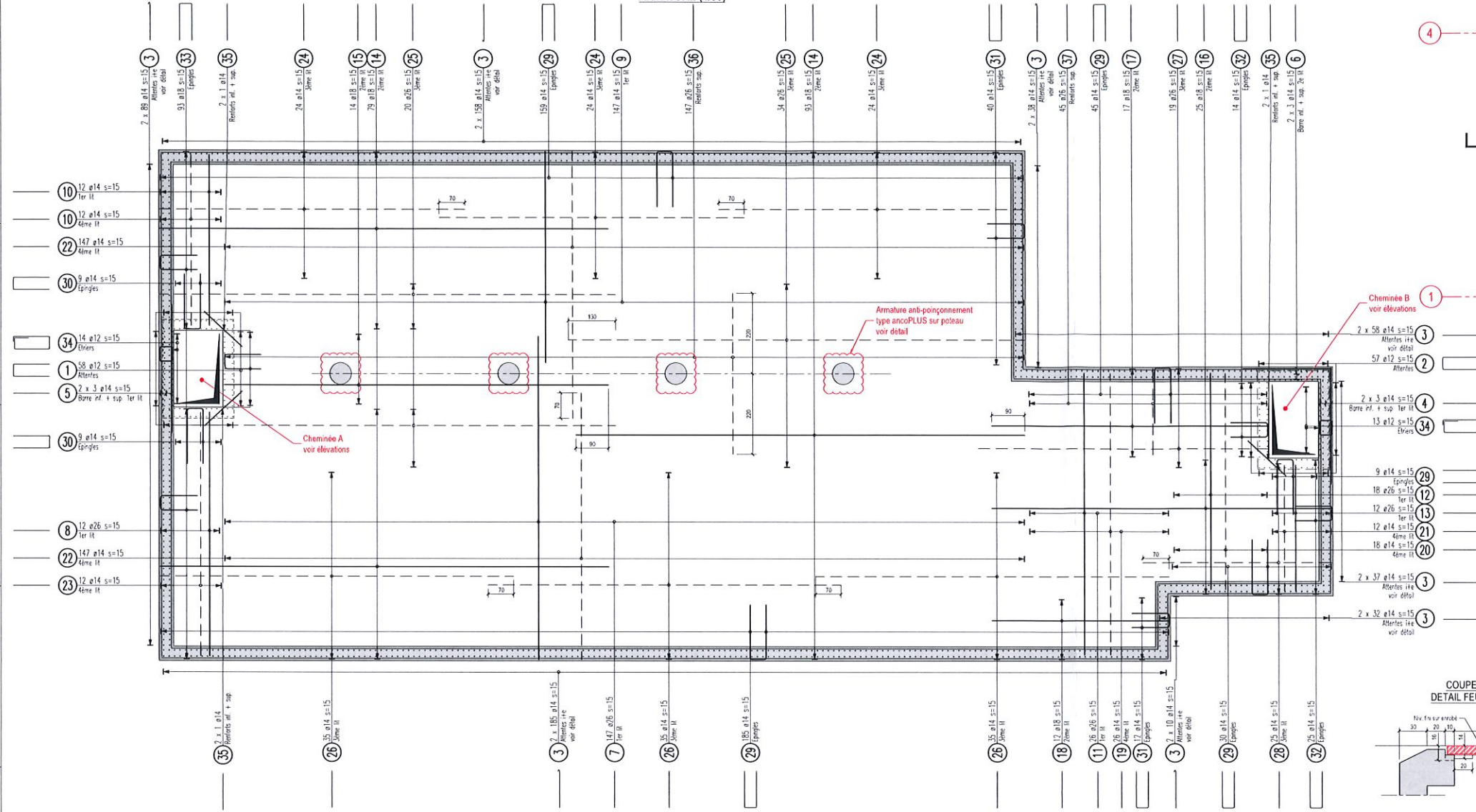
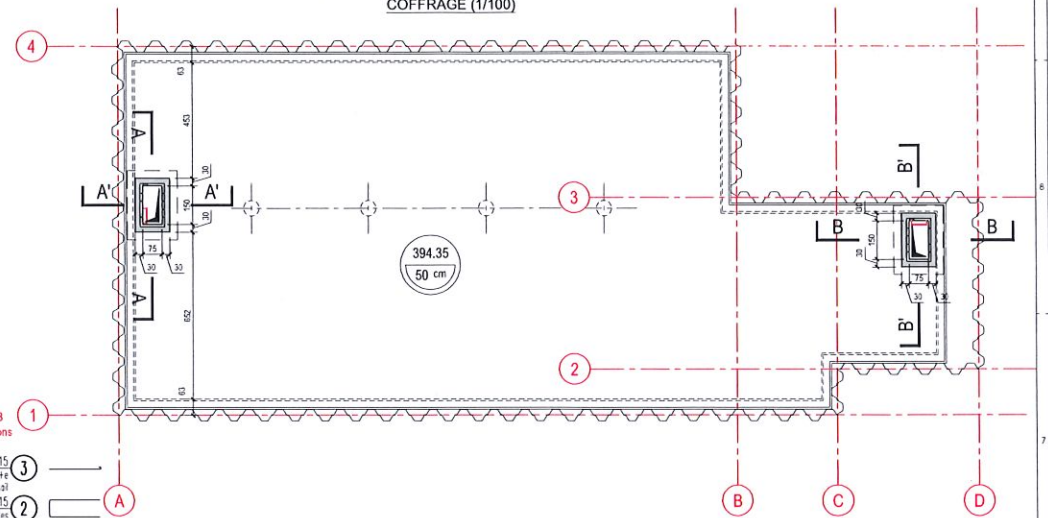




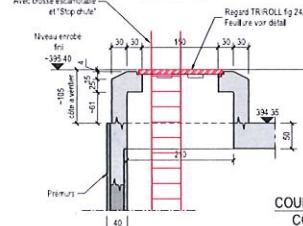
COUPE EN PLAN - VUE DE DESSOUS  
ARMATURE (1/50)



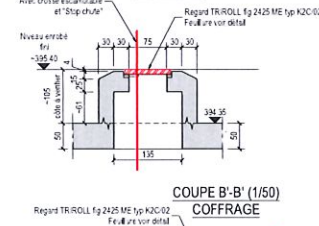
COUPE EN PLAN - VUE DE DESSUS  
COFFRAGE (1/100)



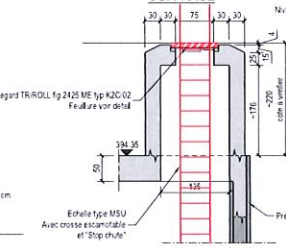
COUPE A-A (1/50)  
COFFRAGE



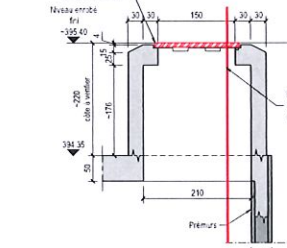
COUPE A'-A' (1/50)  
COFFRAGE



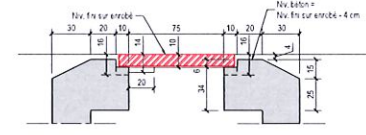
COUPE B-B (1/50)  
COFFRAGE



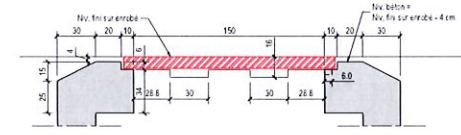
COUPE B'-B' (1/50)  
COFFRAGE



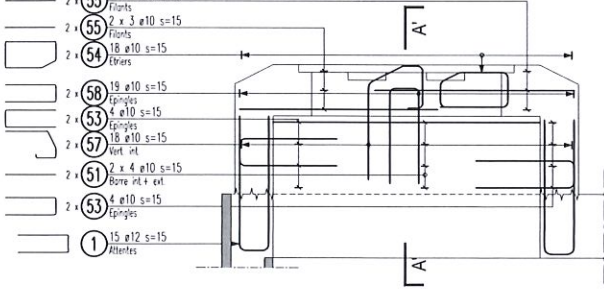
COUPE A-A' ET B-B' (1/20)  
DETAIL FEUILLEURE COUVERCLE



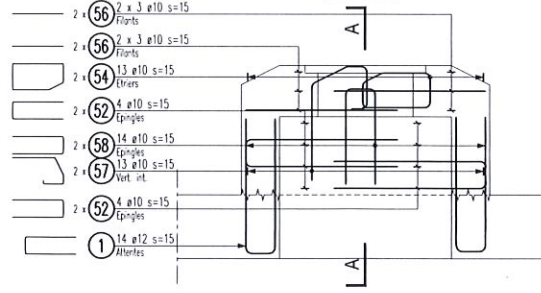
COUPE A-A ET B-B' (1/20)  
DETAIL FEUILLEURE COUVERCLE



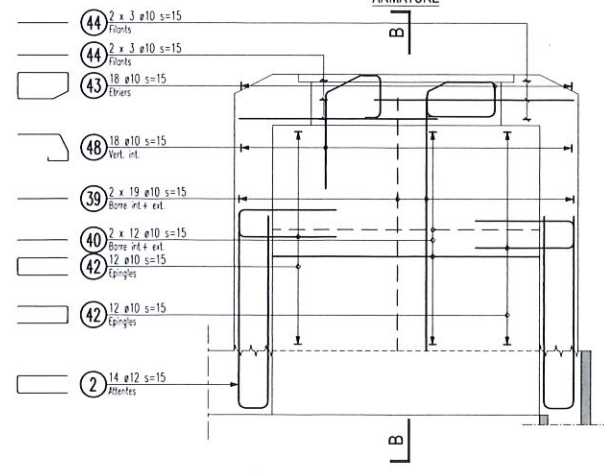
ELEVATION A-A (1/20)  
ARMATURE



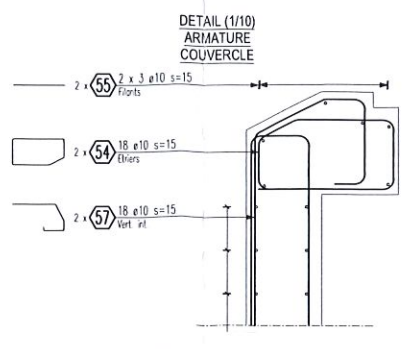
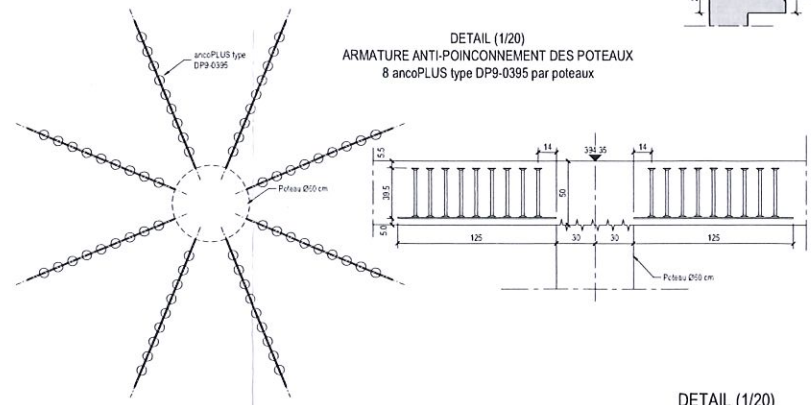
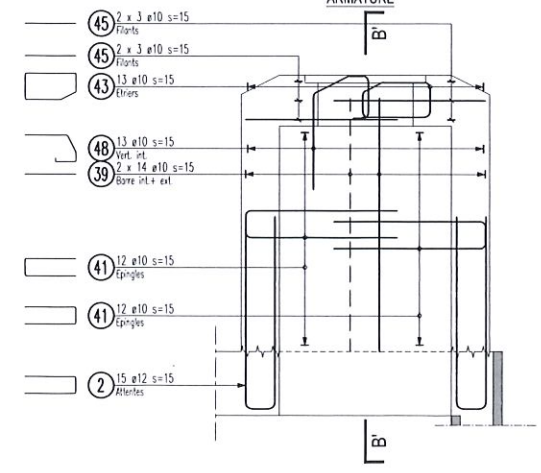
ELEVATION A'-A' (1/20)  
ARMATURE



ELEVATION B-B (1/20)  
ARMATURE



ELEVATION B'-B' (1/20)  
ARMATURE



DETAIL (1/20)  
ARMATURE  
POSITION ATTENTES i+e

OBJETS		PRESCRIPTIONS	
BETON	Racine	NP C - C30/37	
ARMATURE	Type d'acier	B 500 B (S 500)	
	Enrobage	Int 3.5cm ; Ext 3.5cm ; Inf 3.5cm ; Sup 3.5cm ;	
LISTE DE FERS			
CONTROLE DE L'EXECUTION			
NOTE SUR LA SECURITE			
EXECUTION			

Ville de Lancy  
Rue de la République 1  
1130 Lancy  
Tel. 022 701 15 11

**RESEAUX D'ASSAINISSEMENT  
QUARTIER DES SEMAILLES**

COLLECTEURS EU/EC - PUBLICS

**Bassin de rétention de l'école "En Sauvy"**

**COFFRAGE ARMATURE - DALLE**

**Phase 51  
EXECUTION**

Geos  
Géomètres Associés SA  
Société anonyme  
Capital 200 000 CHF  
Suisse

Date	Dess	Ind	Modification	Dess né	PMS
20.07.2018	PMS	A	Emplacement et orientation cheminée A	Date	16.07.2018
		B	Contrôle	Date Rev	MAD
		C		Date Rev	
		D		Date Rev	
		E		Date Rev	
		F		Date Rev	
		G		Date Rev	

AFFAIRE N°: 1841

DESSIN N°: 1841-310

A