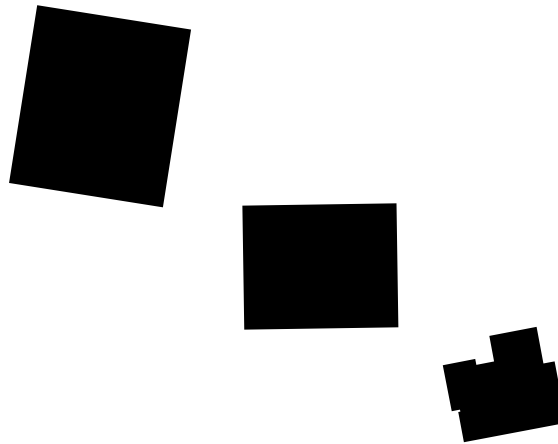
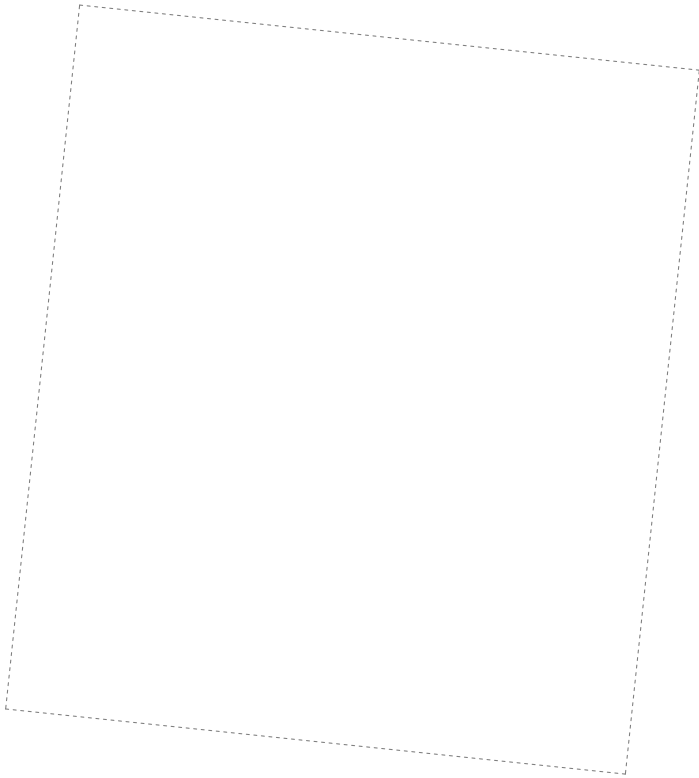


# Trèfle

Projektwettbewerb Neubau Mehrzweckhalle,  
Kindergarten- und Schulräume, Müllheim



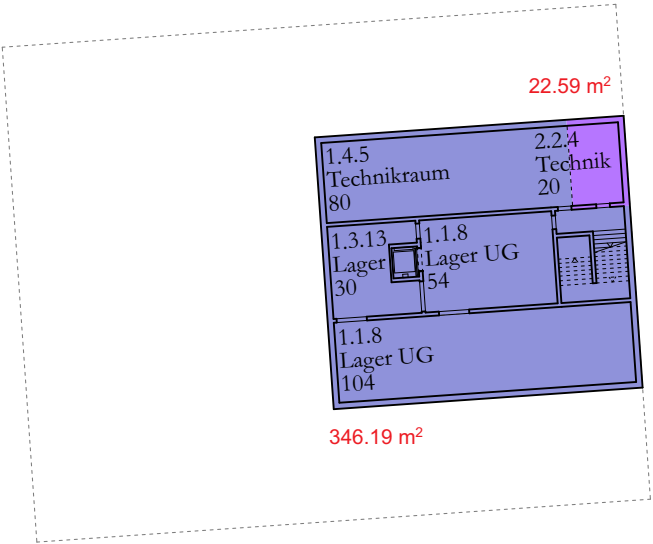
Nachweis Volumen und Flächen nach SIA 416

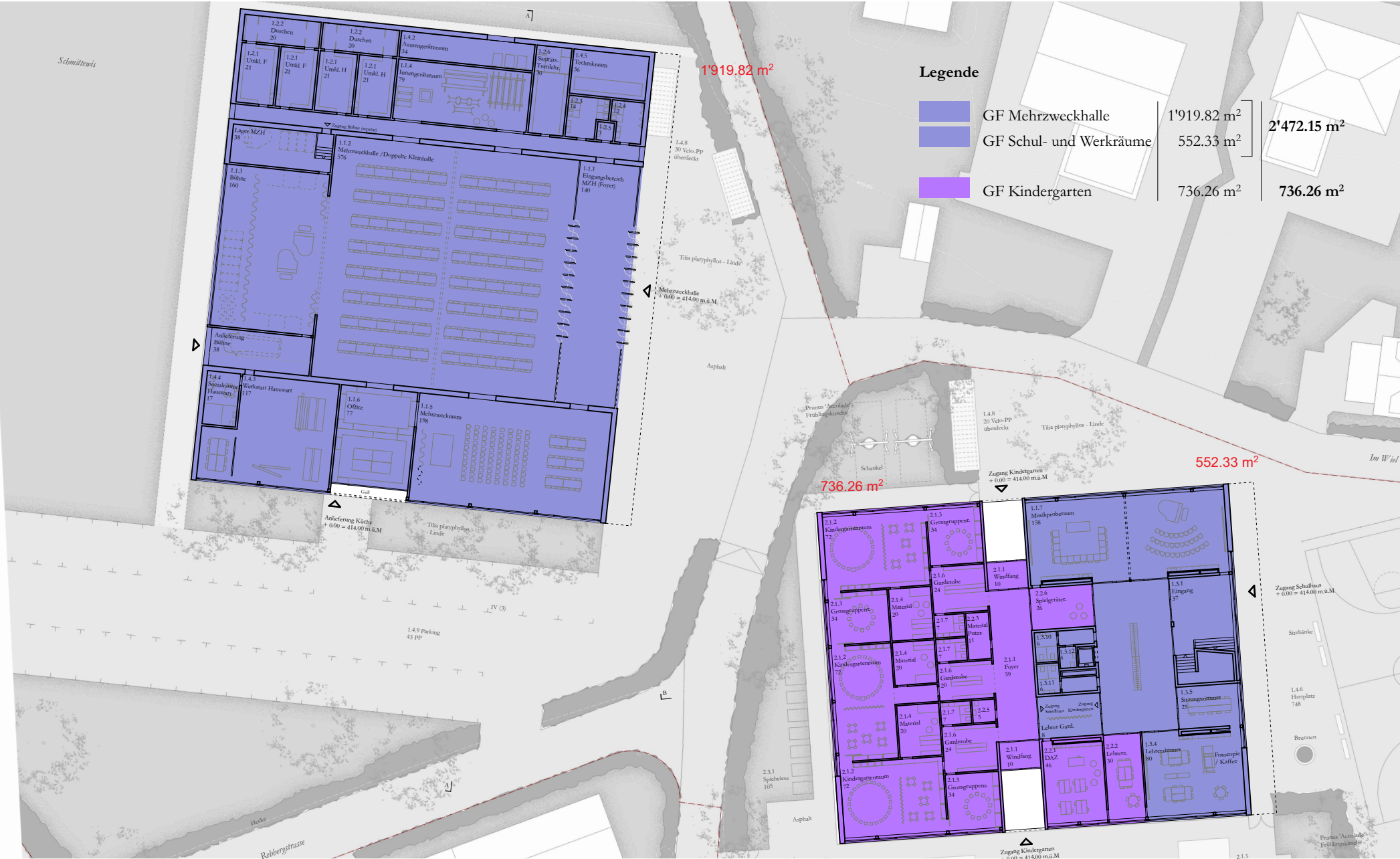


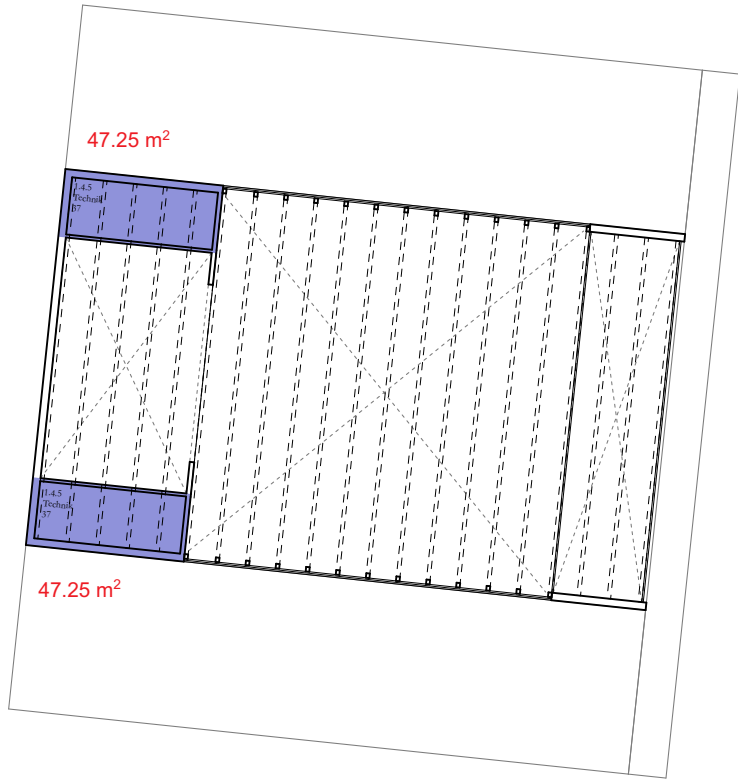
Legende

	GF Mehrzweckhalle	-	346.19 m²
	GF Schul- und Werkräume	346.19 m²	
	GF Kindergarten	22.59 m²	22.59 m²

Total GF unterirdisch  
349.19 m² + 22.59 m² = 368.78 m²

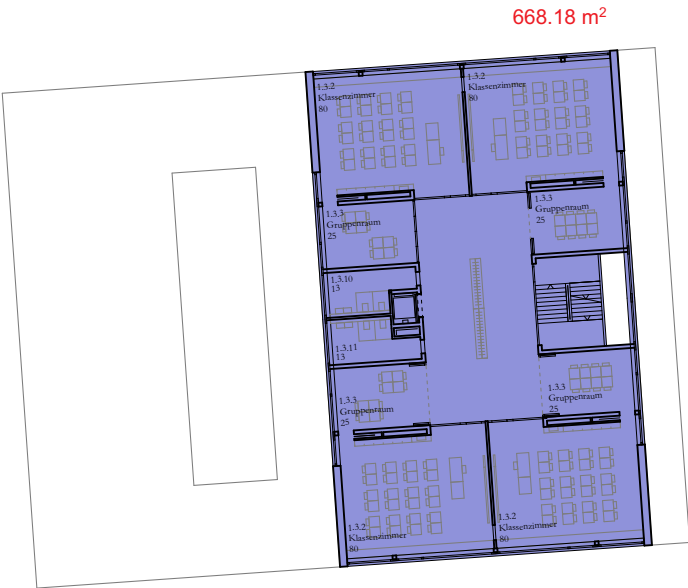




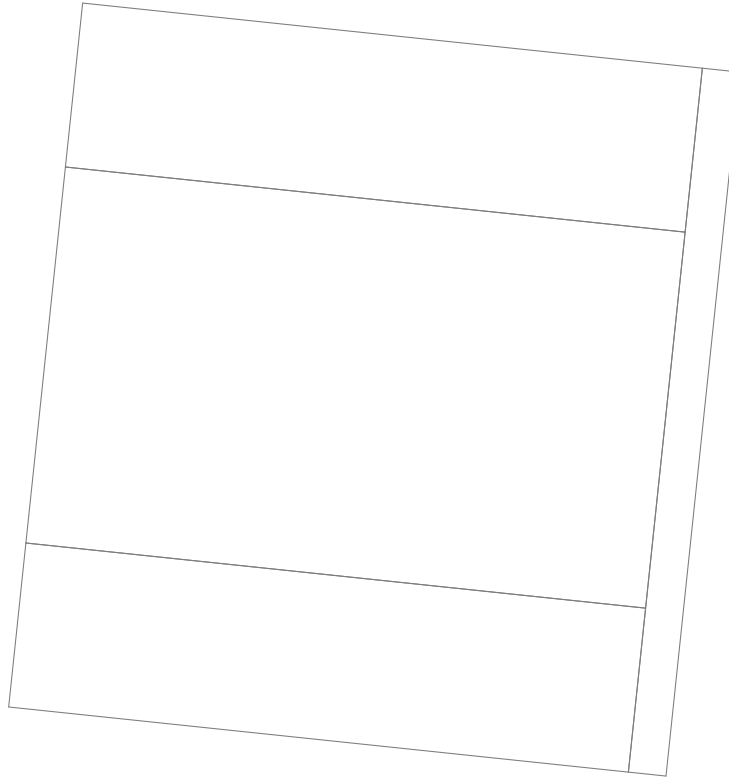


Legende

	GF Mehrzweckhalle	94.50 m <sup>2</sup>	762.68 m <sup>2</sup>
	GF Schul- und Werkräume	668.18 m <sup>2</sup>	
	GF Kindergarten	-	-







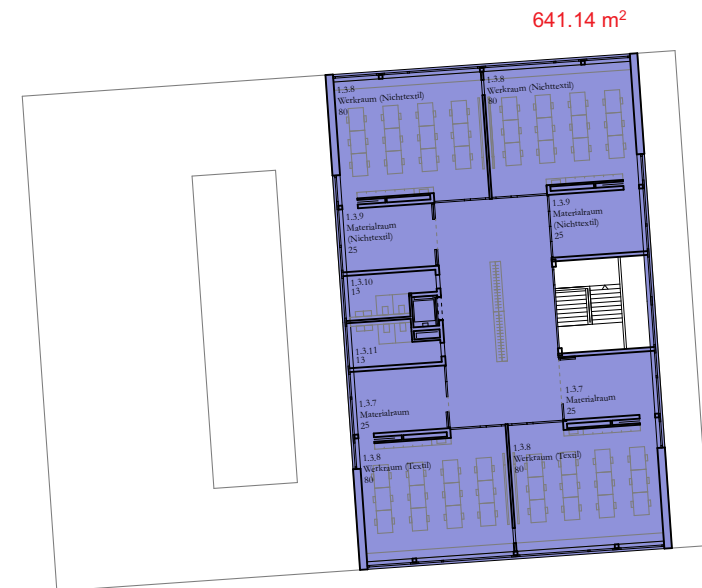
### Legende

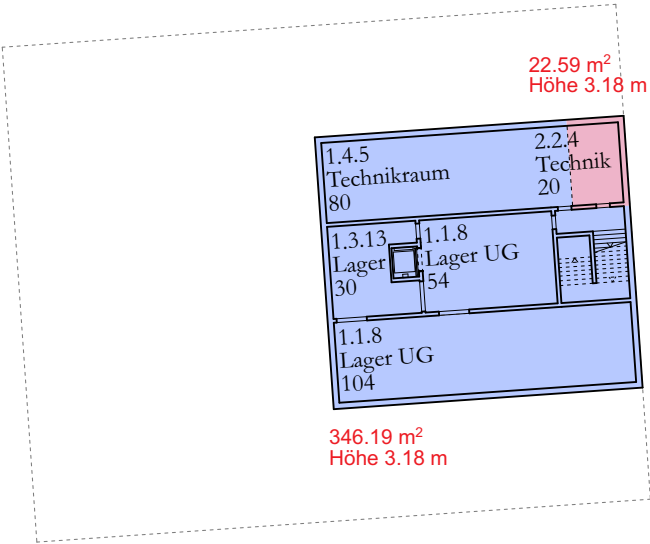
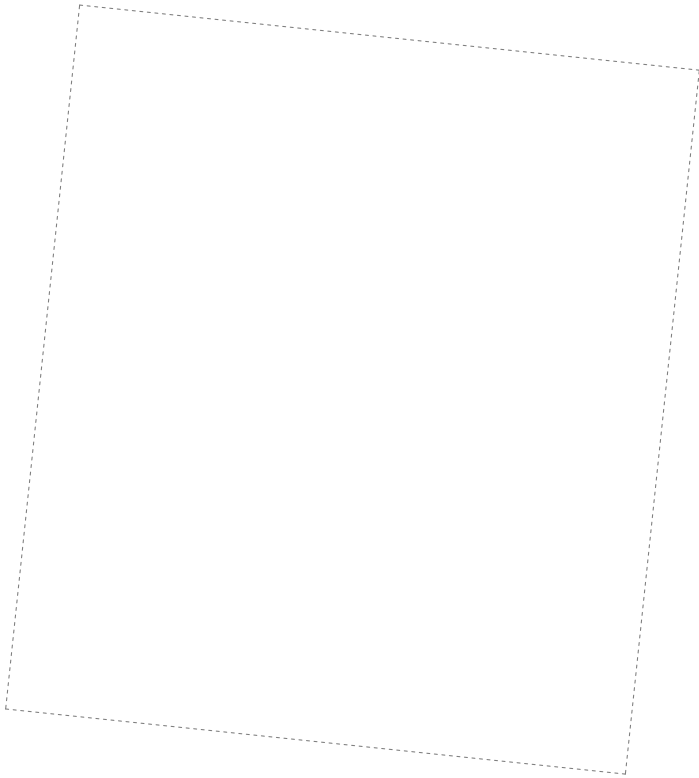
GF Mehrzweckhalle	-	641.14 m²	641.14 m²
GF Schul- und Werkräume	641.14 m²		
GF Kindergarten	-	-	-

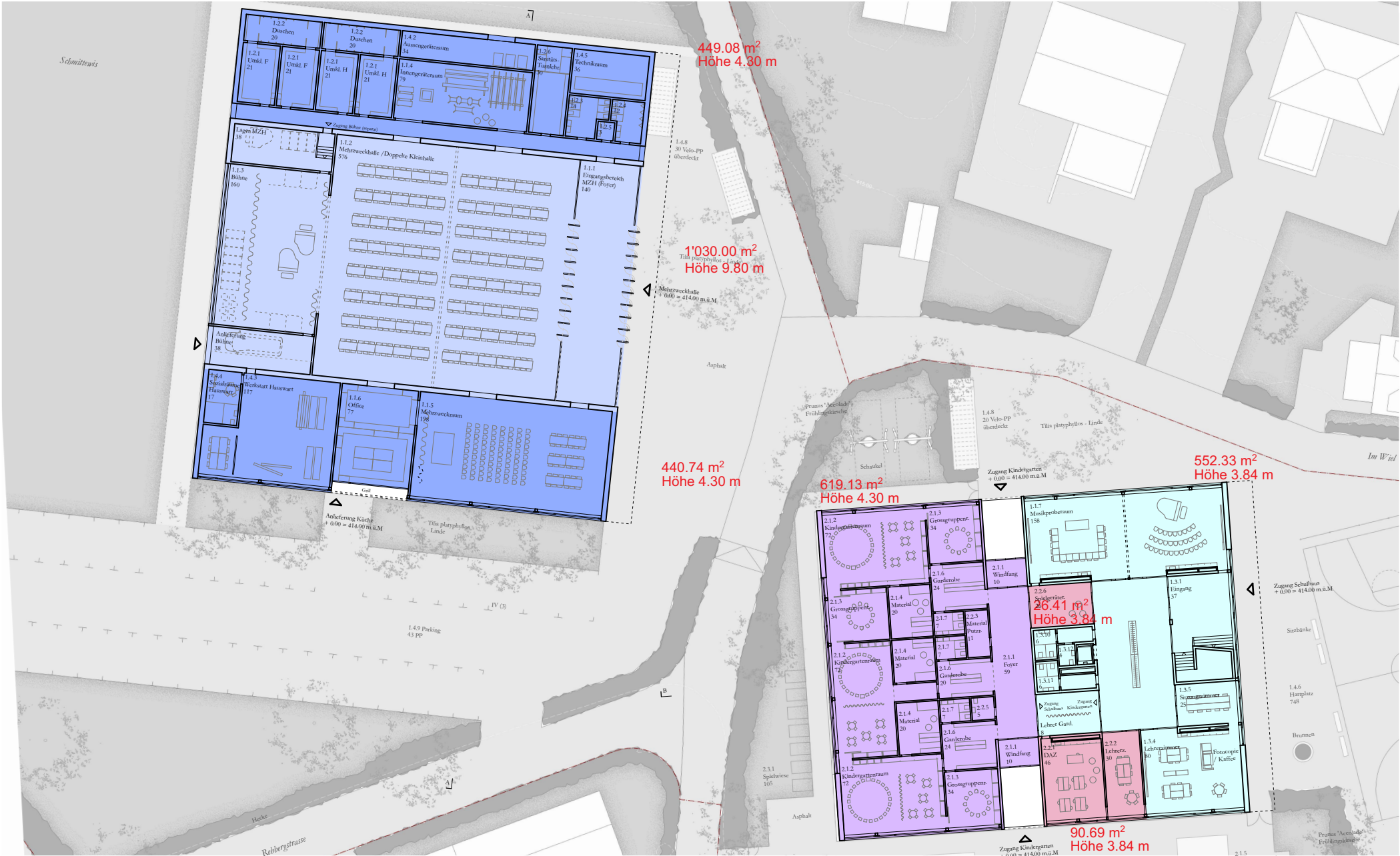
---

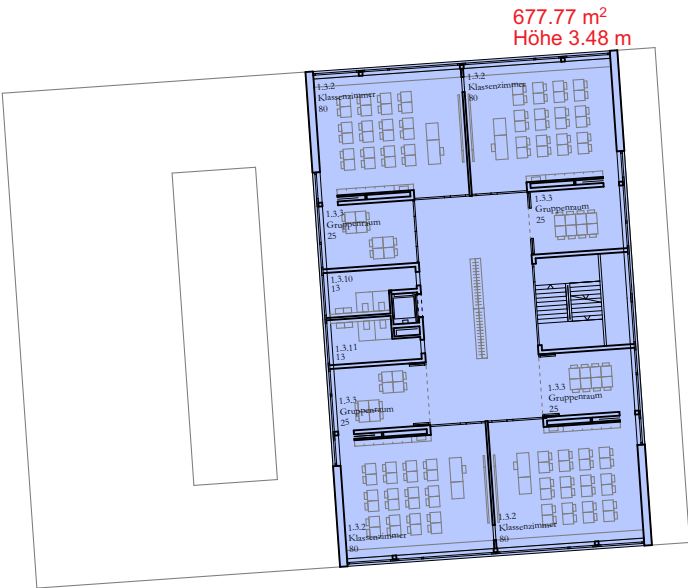
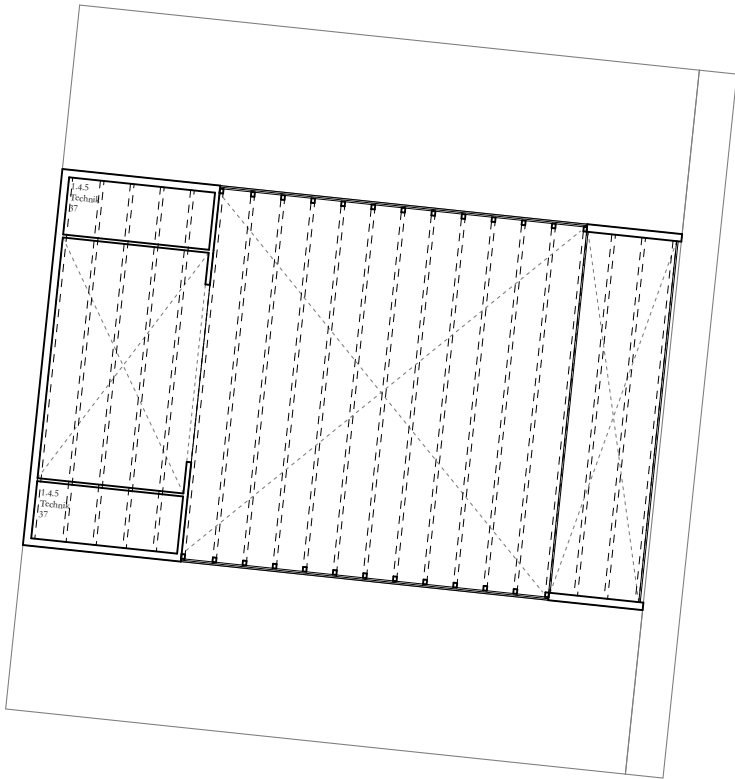
**Total GF oberirdisch**

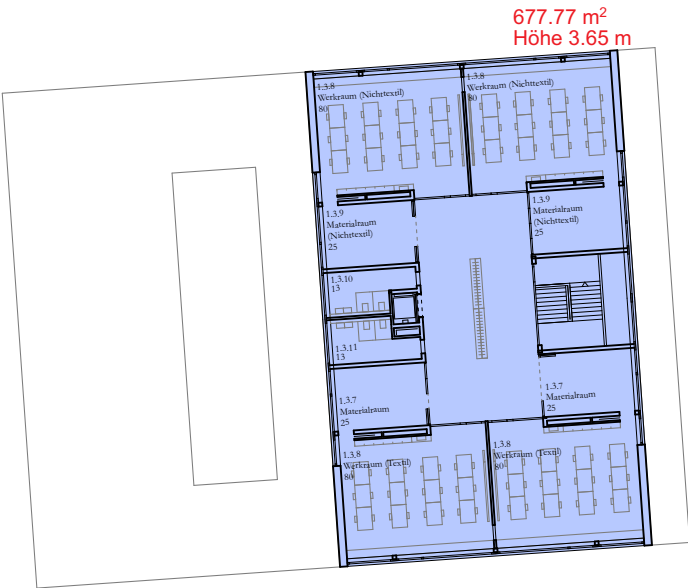
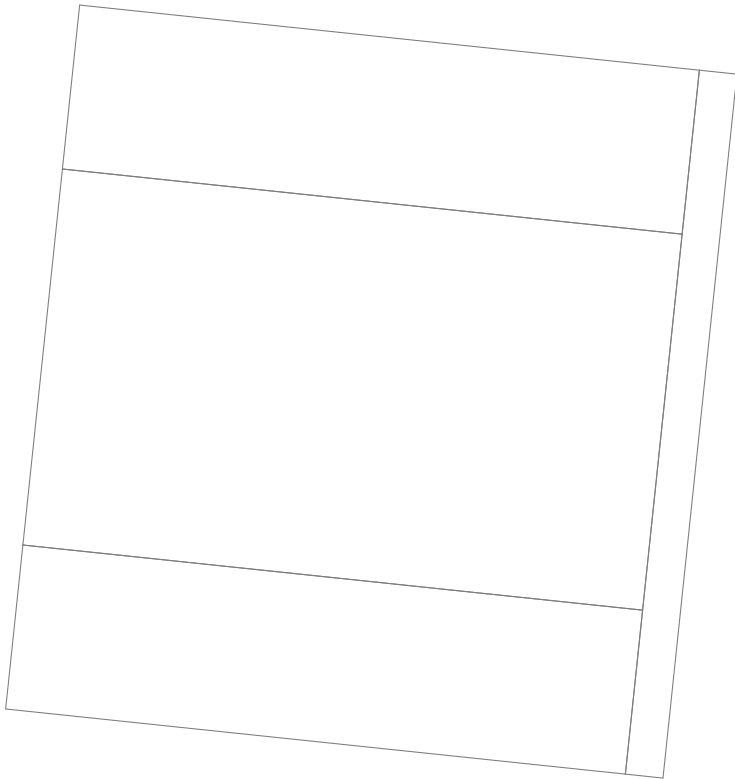
$$2'472.15 \text{ m}^2 + 736.26 \text{ m}^2 + 762.68 \text{ m}^2 + 641.14 \text{ m}^2 = 4'612.23 \text{ m}^2$$

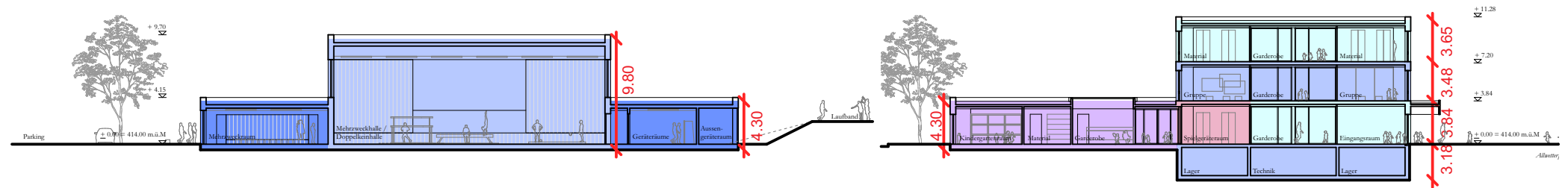












Volumen unterirdisch

GV Mehrzweckhalle	-	
GV Schul- und Werkräume	1'100.88 m <sup>3</sup>	1'100.88 m <sup>3</sup>
GV Kindergarten	71.84 m <sup>3</sup>	71.84 m <sup>3</sup>

1'172.72 m<sup>3</sup>

Volumen oberirdisch

GV Mehrzweckhalle	10'094.00 m <sup>3</sup>	
+ 449.08 m <sup>2</sup> x 9.80 m	1'931.04 m <sup>3</sup>	
+ 440.74 m <sup>2</sup> x 4.30 m	1'895.18 m <sup>3</sup>	13'920.22 m <sup>3</sup>
GV Schul- und Werkräume	2'120.95 m <sup>3</sup>	
552.33 m <sup>2</sup> x 3.84 m	2'358.64 m <sup>3</sup>	
+ 677.77 m <sup>2</sup> x 3.48 m	2'473.86 m <sup>3</sup>	6'953.45 m <sup>3</sup>
GV Kindergarten	2'662.26 m <sup>3</sup>	
619.13 m <sup>2</sup> x 4.30 m	348.25 m <sup>3</sup>	
+ 90.69 m <sup>2</sup> x 3.84 m	101.41 m <sup>3</sup>	3'111.92 m <sup>3</sup>

23'985.59 m<sup>3</sup>











Legende		
<div></div>	Umgebungsfläche, Bearbeitungsgebiete $4'063.56\text{ m}^2 + 3'641.60\text{ m}^2 =$	<b>7'705.16 m<sup>2</sup></b>
<div></div>	Umgebungsfläche, Hartflächen $1'470.82\text{ m}^2 + 1'959.58\text{ m}^2 =$	<b>3'430.40 m<sup>2</sup></b>
<div></div>	Umgebungsfläche, Grünflächen $65.03\text{ m}^2 + 110.79\text{ m}^2 + 347.97\text{ m}^2 + 485.72\text{ m}^2 =$	<b>1'009.51 m<sup>2</sup></b>
<div></div>	Gebäudegrundfläche, Neubauten $1'928.16\text{ m}^2 + 1'337.09\text{ m}^2 =$	<b>3'265.25 m<sup>2</sup></b>



