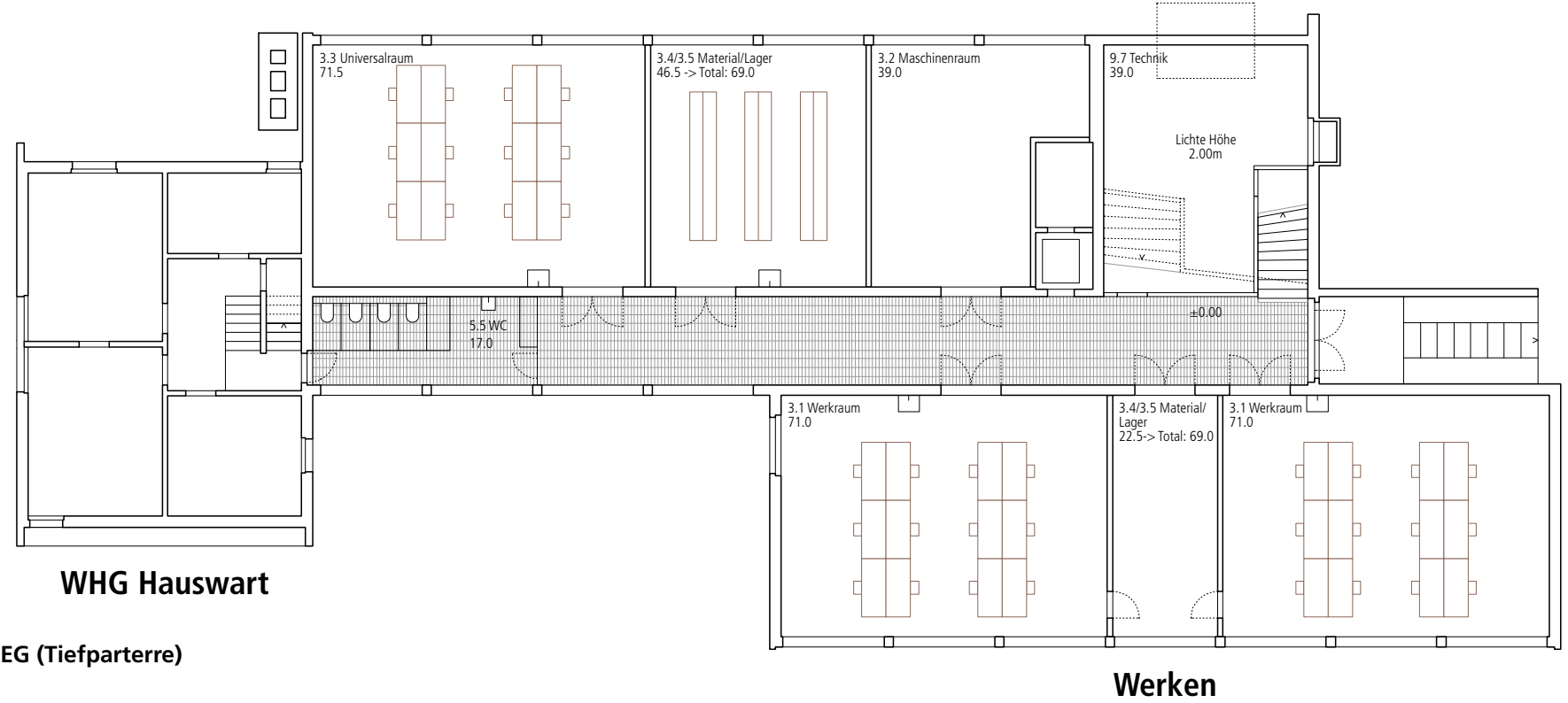
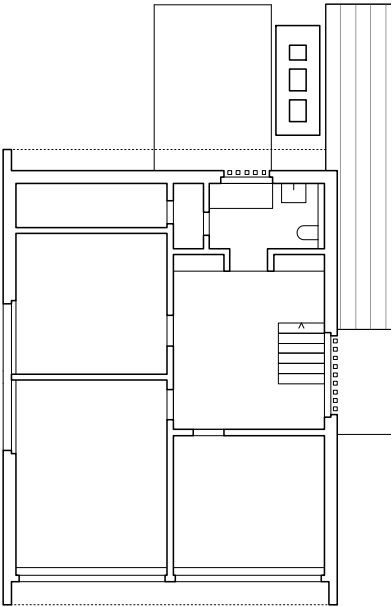
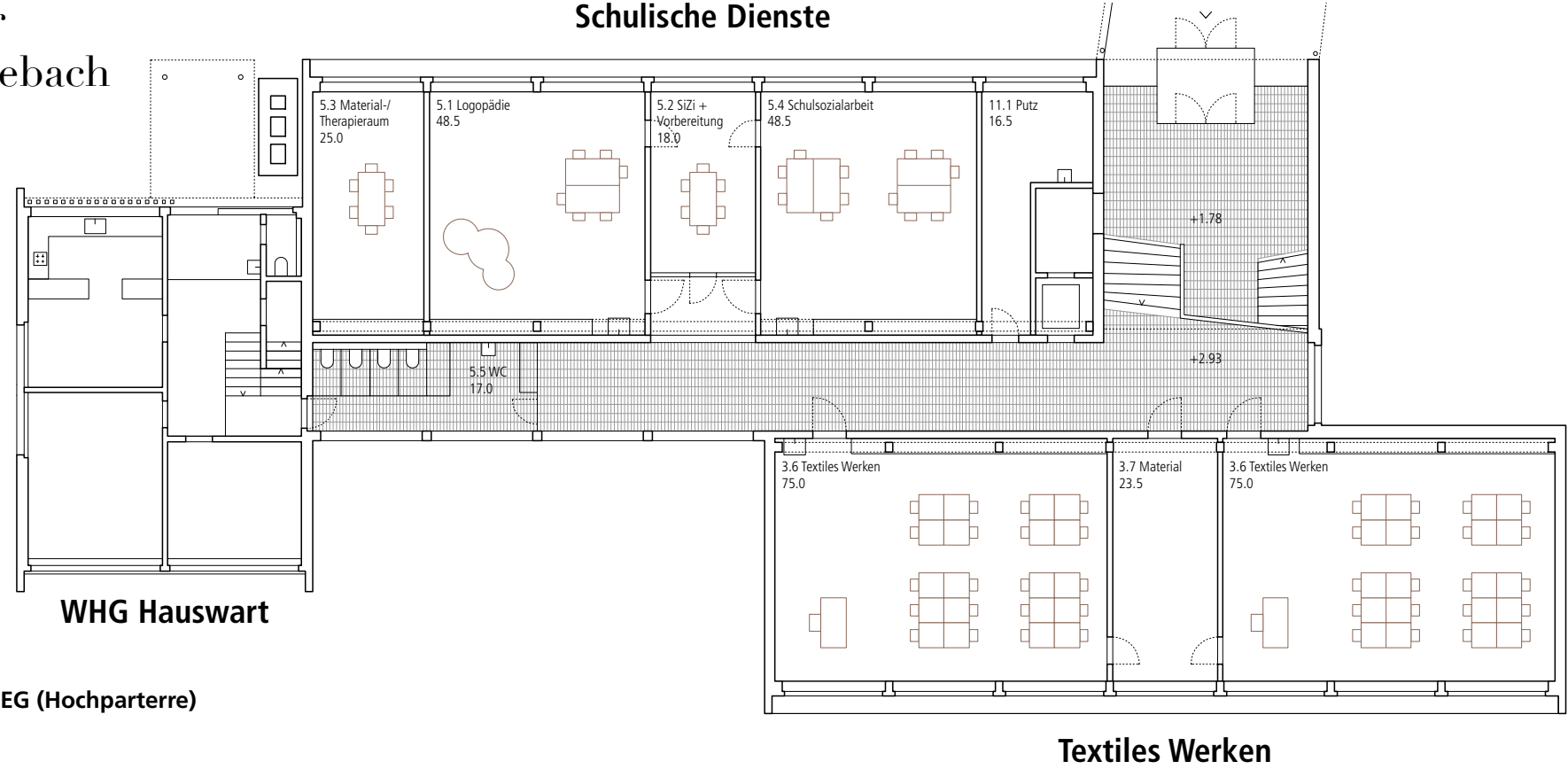


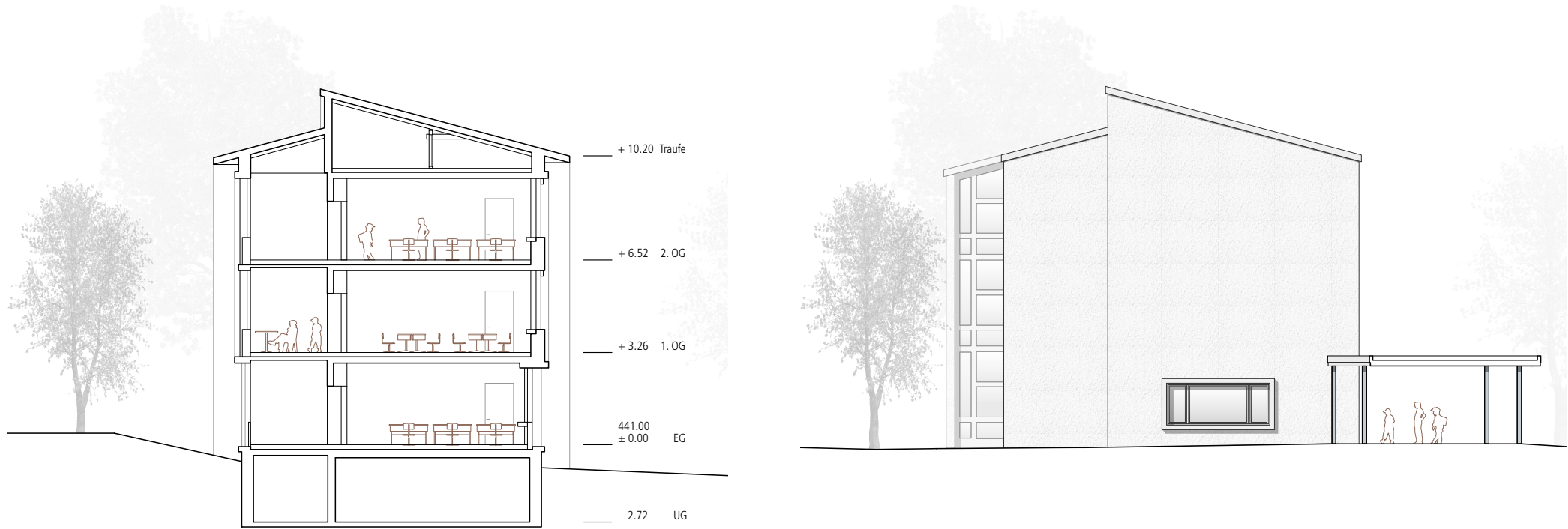
Dorfmatthewiese

Sternenweg



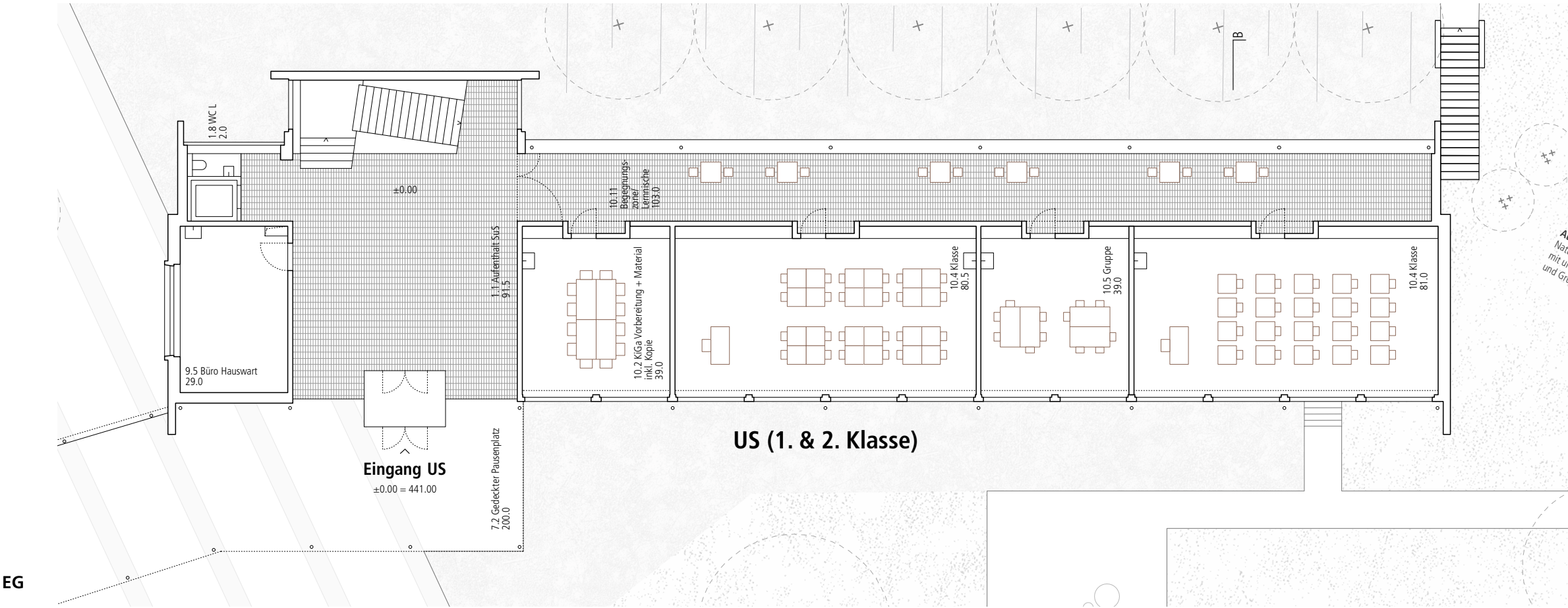
Fassadenausschnitt (West)

BHS 19-04
061 Vorprojekt Schule, Baar
HW 1-200
GR / AN
27.11.19 / DIN A3 / th, cw

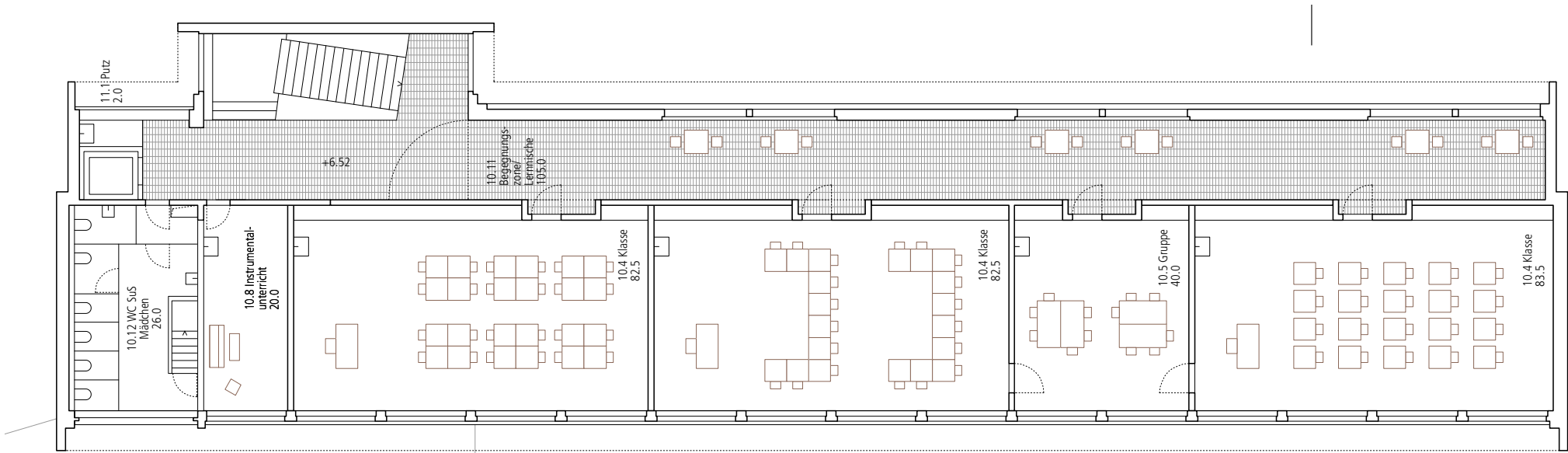


Querschnitt (B-B)

Stirnfassade (West)

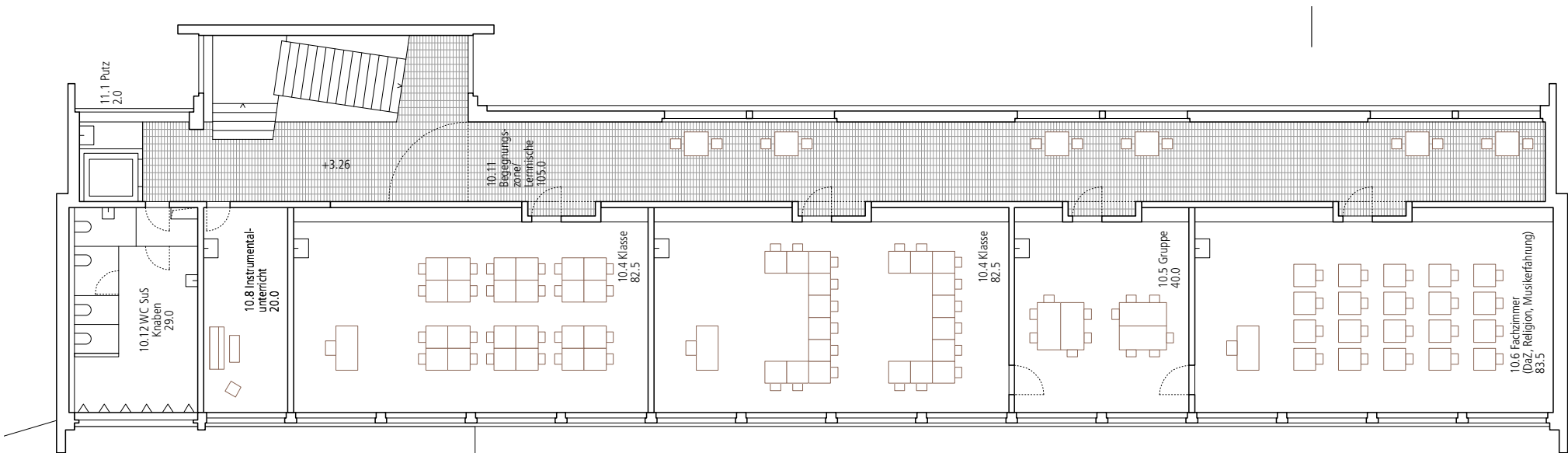


BHS 19-04
061 Vorprojekt Schule, Baar
US 1-200
EG / SN / AN
27.11.19 / DIN A3 / th, cw



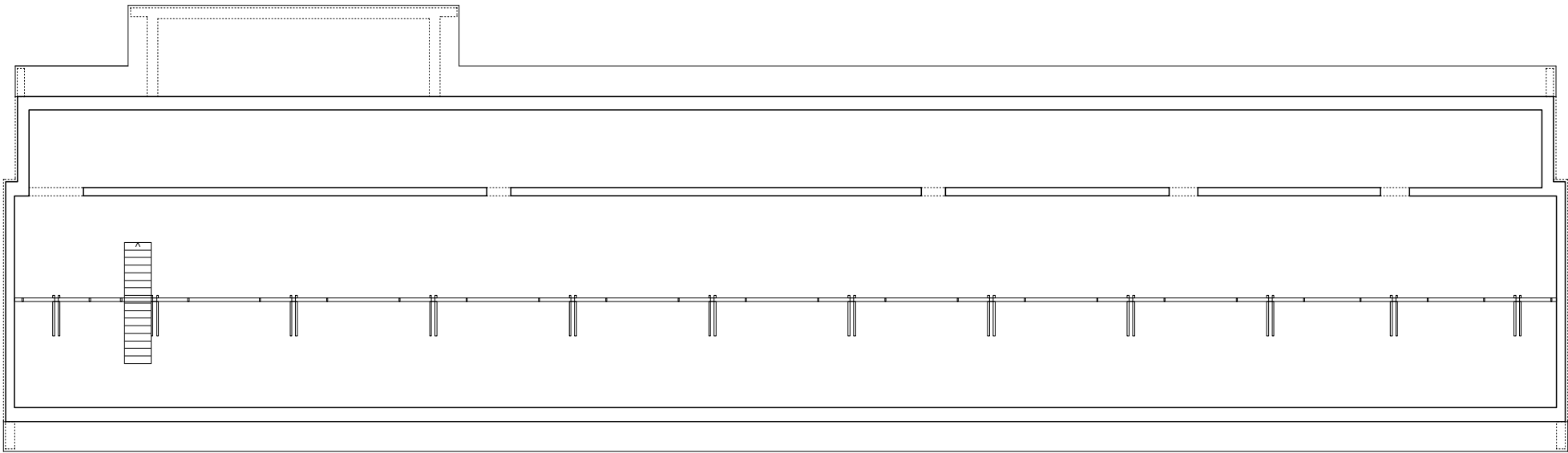
US (1. & 2. Klasse)

2. OG

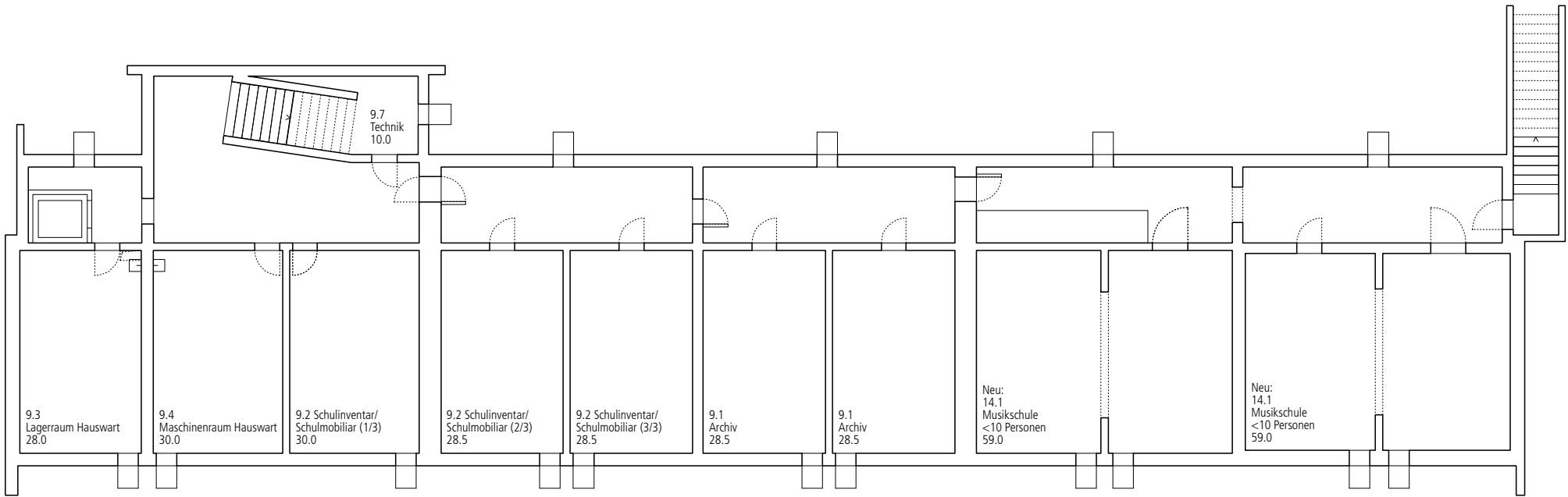


US (1. & 2. Klasse)

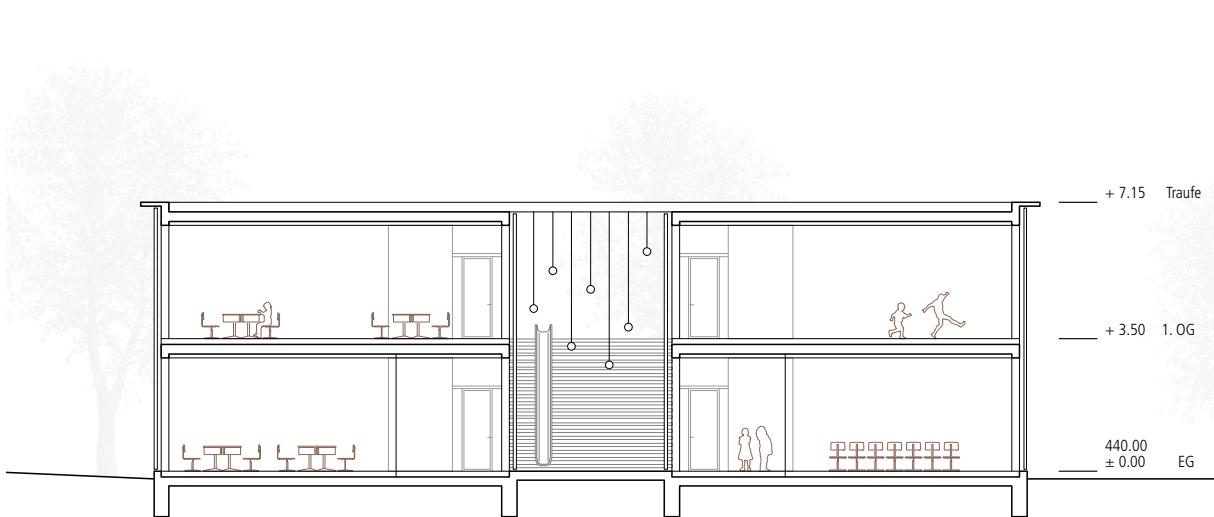
1. OG



DG



UG

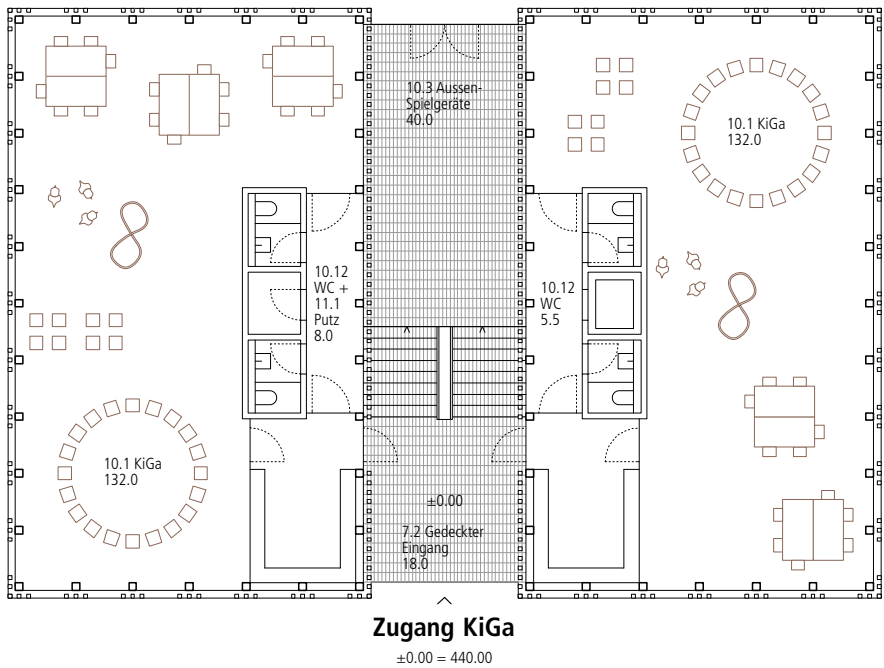


Querschnitt (B-B)



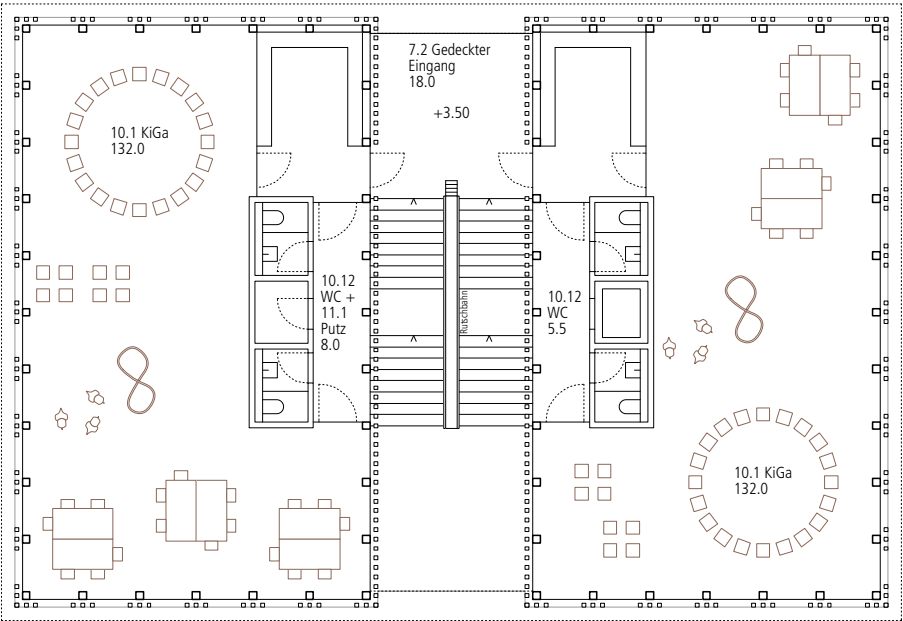
Längsfassade (West)

Kindergarten

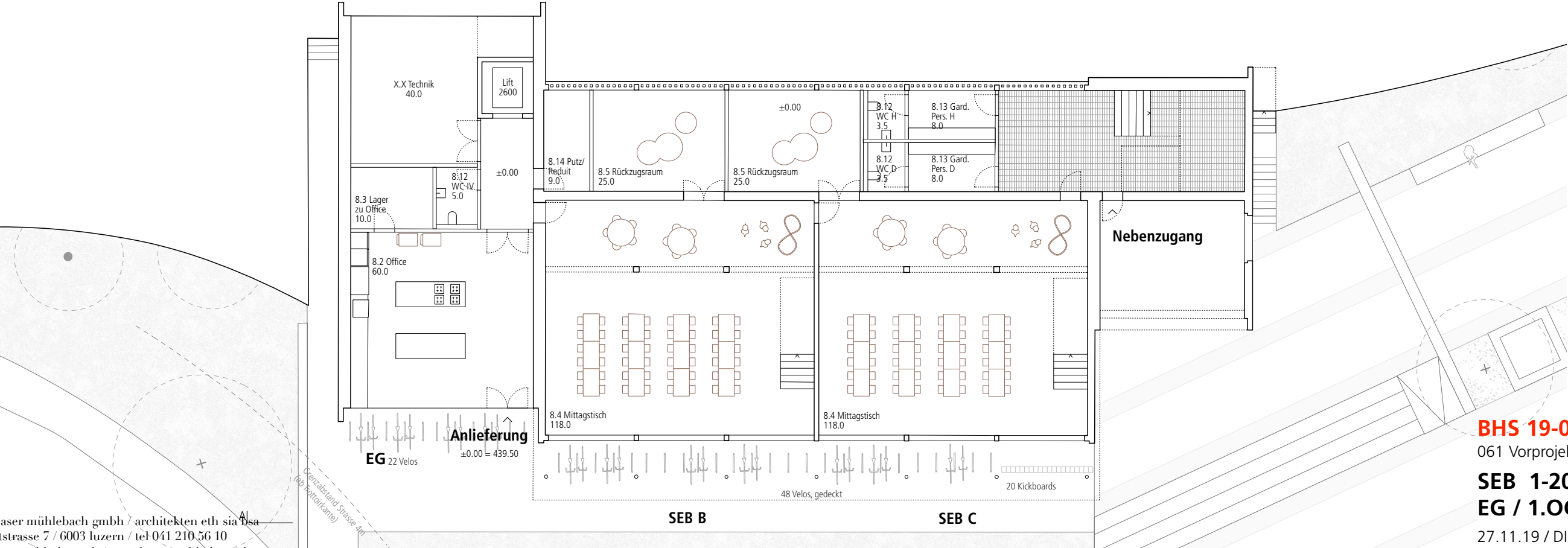
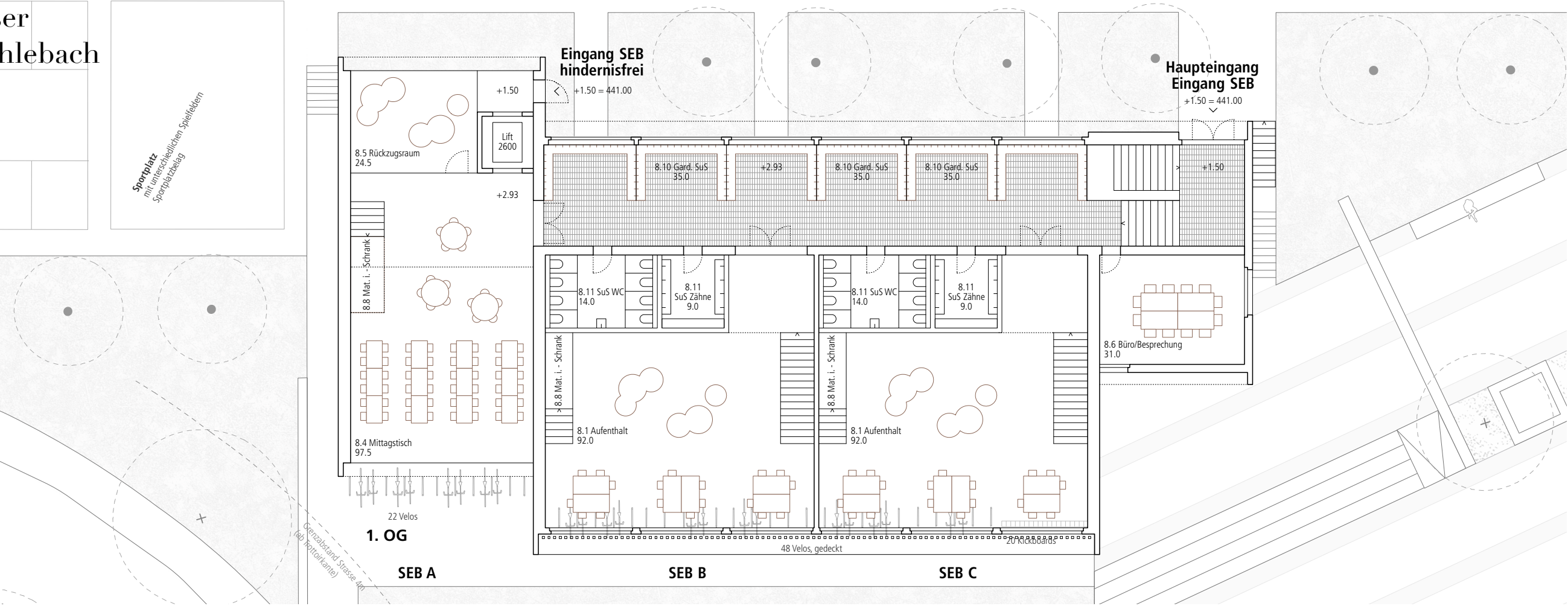


EG

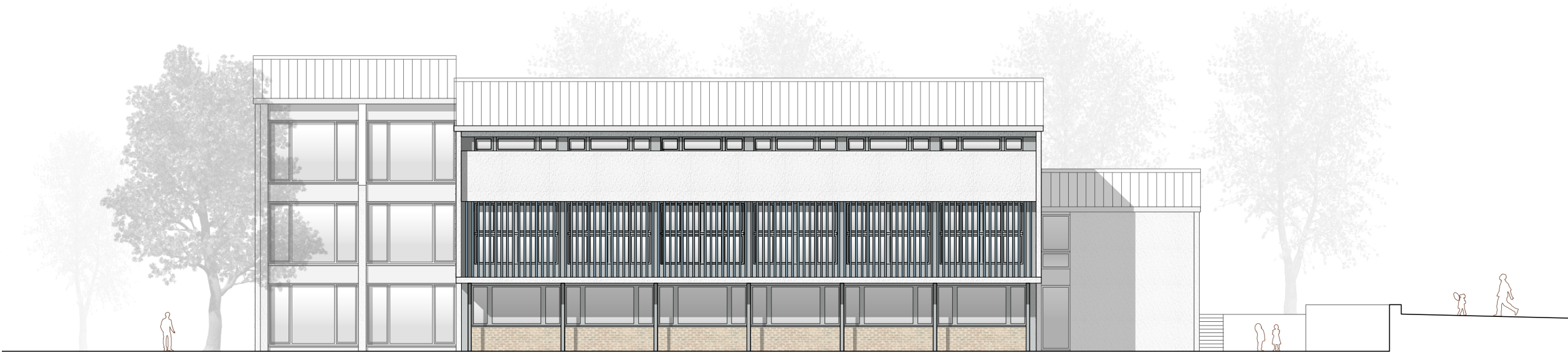
Kindergarten



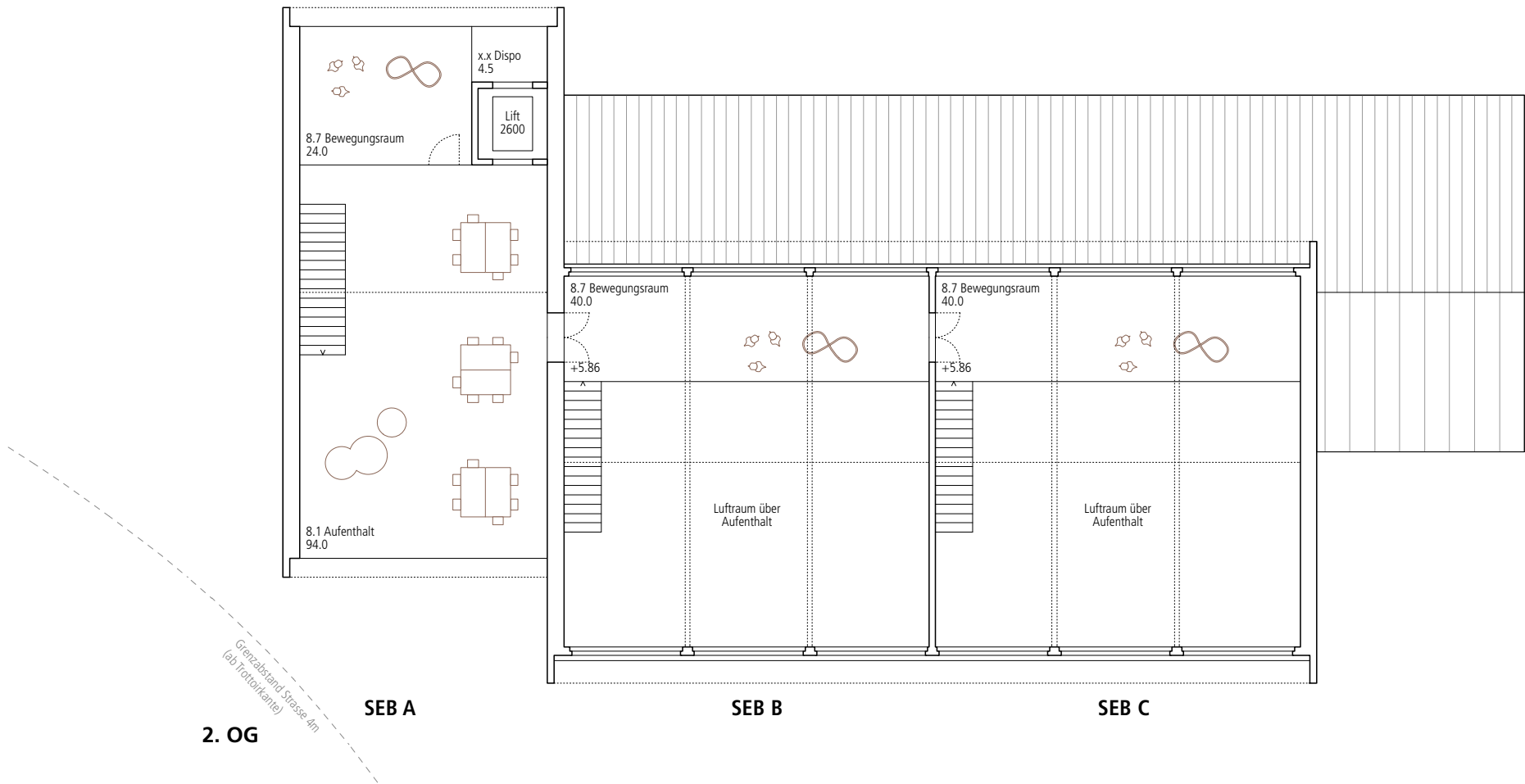
1. OG



BHS 19-04
061 Vorprojekt Schule, Baar
SEB 1-200
EG / 1. OG
27.11.19 / DIN A3 / th, cw



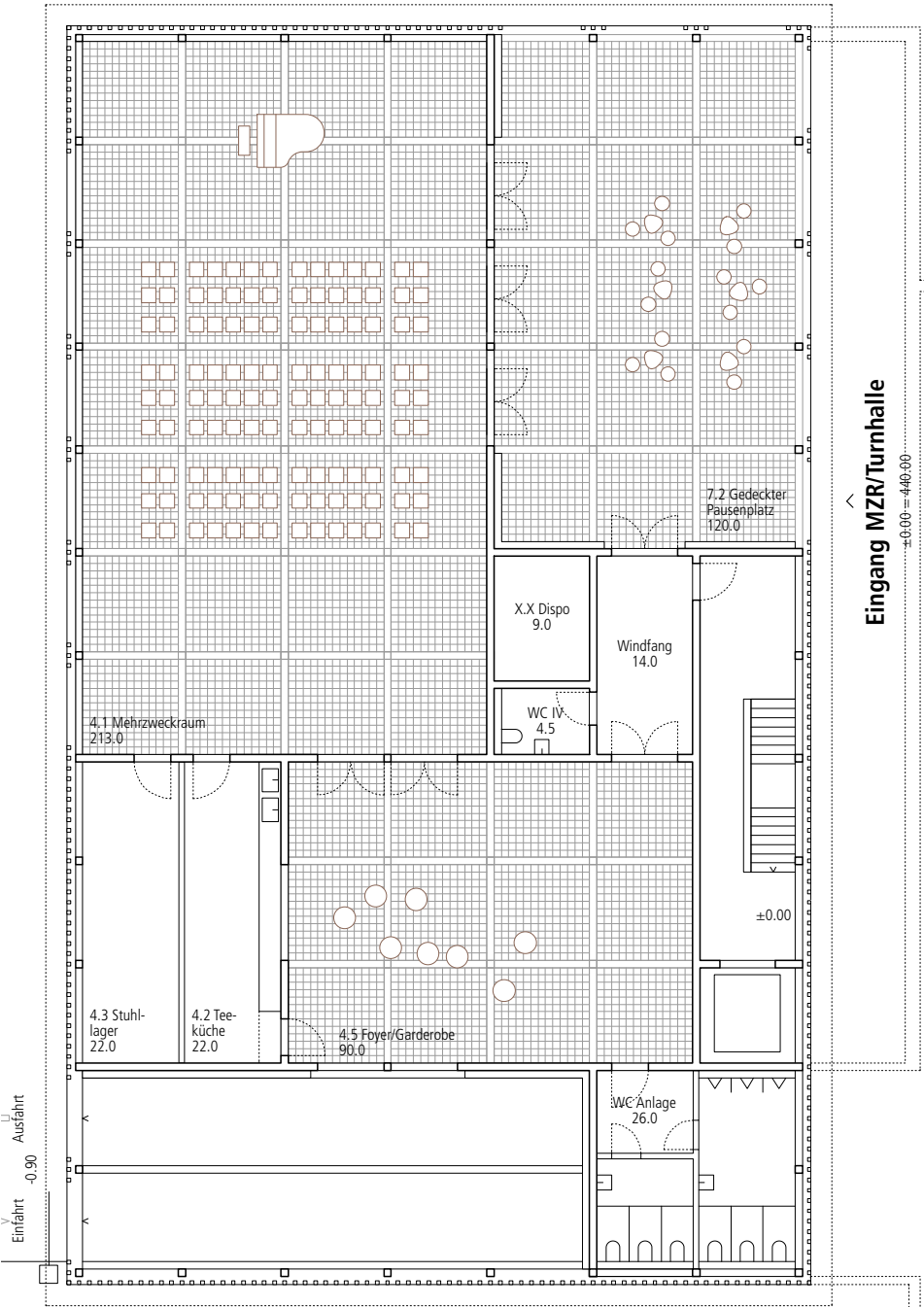
Längsfassade (West)



BHS 19-04
061 Vorprojekt Schule, Baar
SEB 1-200
2.OG / AN
27.11.19 / DIN A3 / th, cw

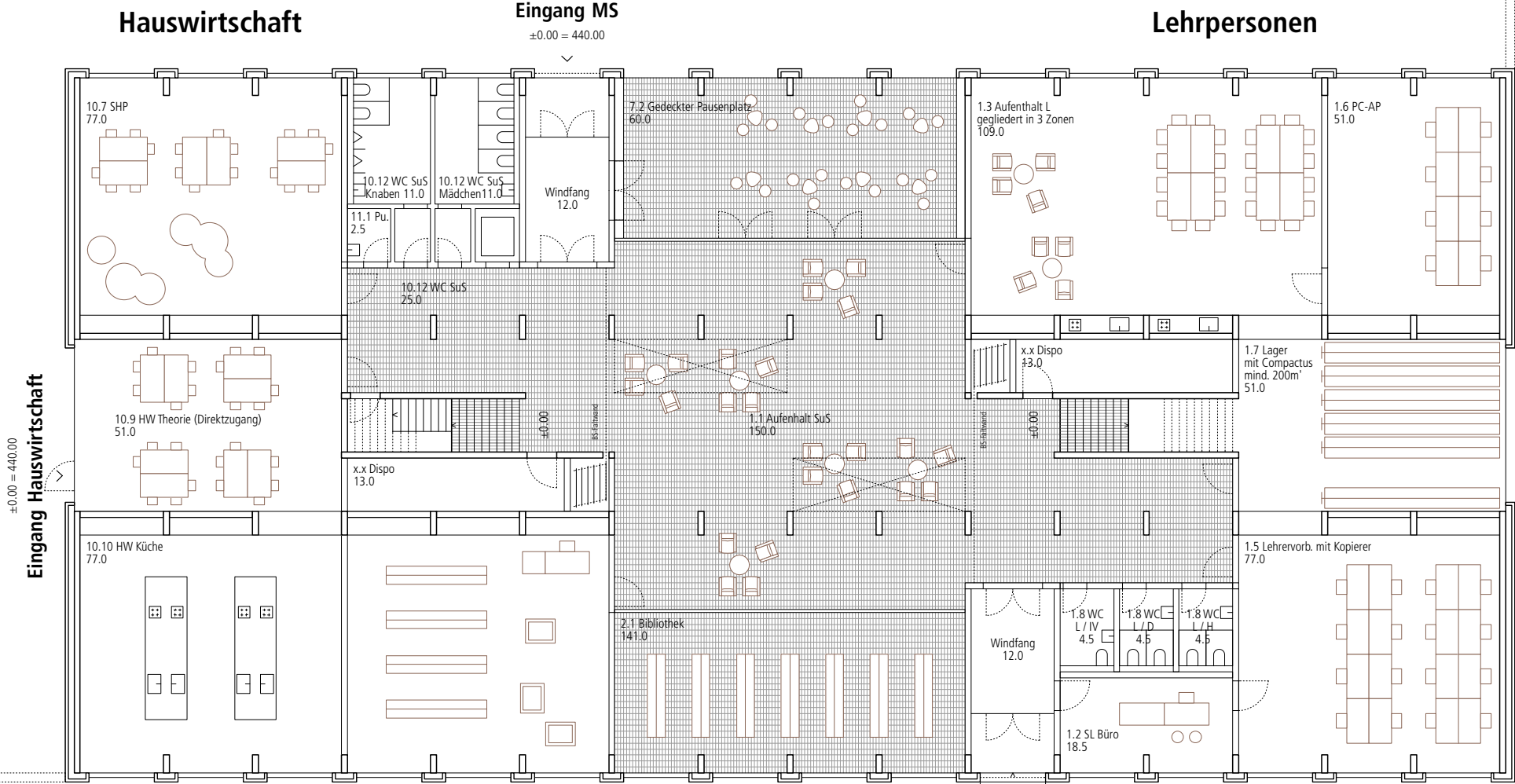
MZR/Aula + Turnhalle

WHG Hausw...



Eingang MZR/Turnhalle

±0.00 = 440.00



Eingang Hauswirtschaft

±0.00 = 440.00

Eingang MS
±0.00 = 440.00

Lehrpersonen

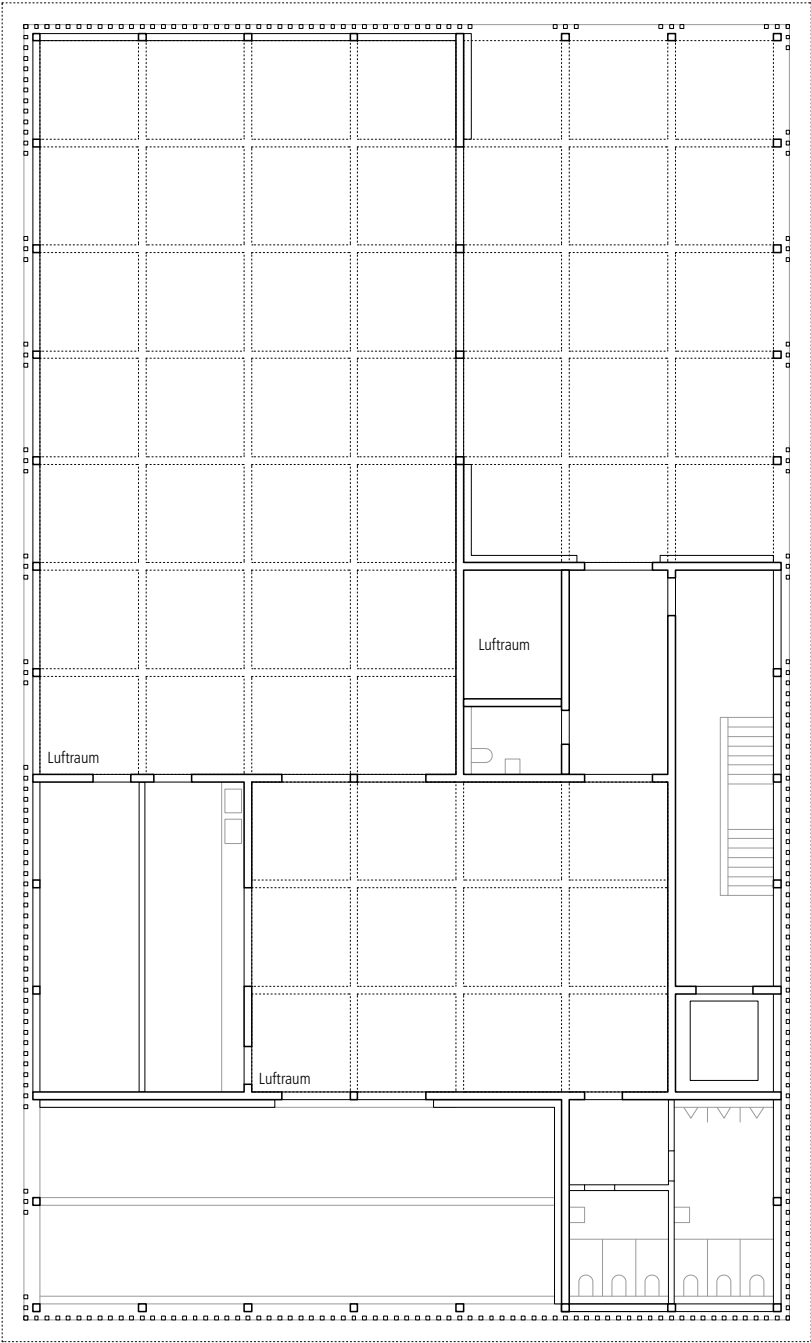
Hauswirtschaft

Bibliothek

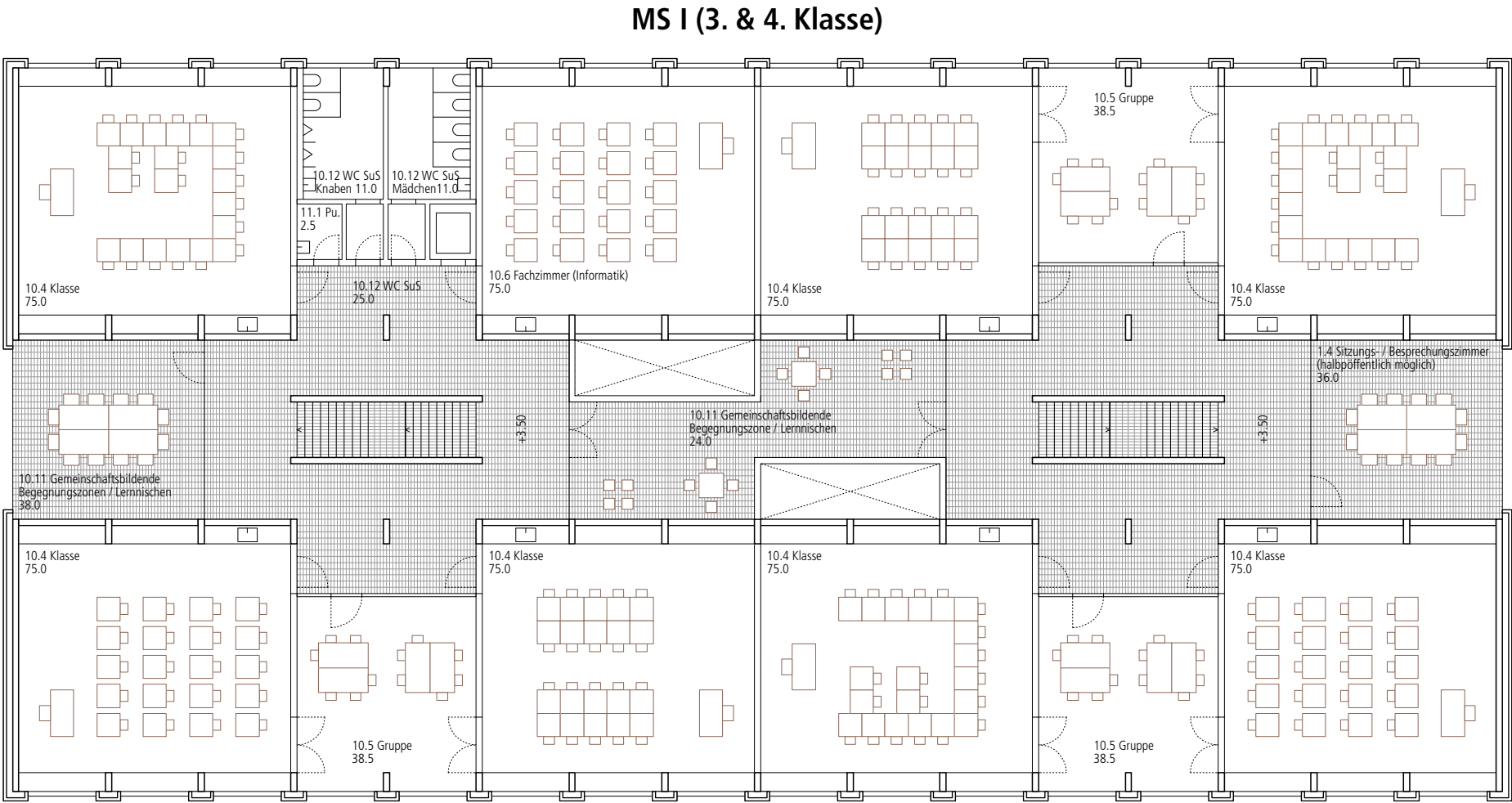
Nebeneingang Lehrpersonen
-0.90

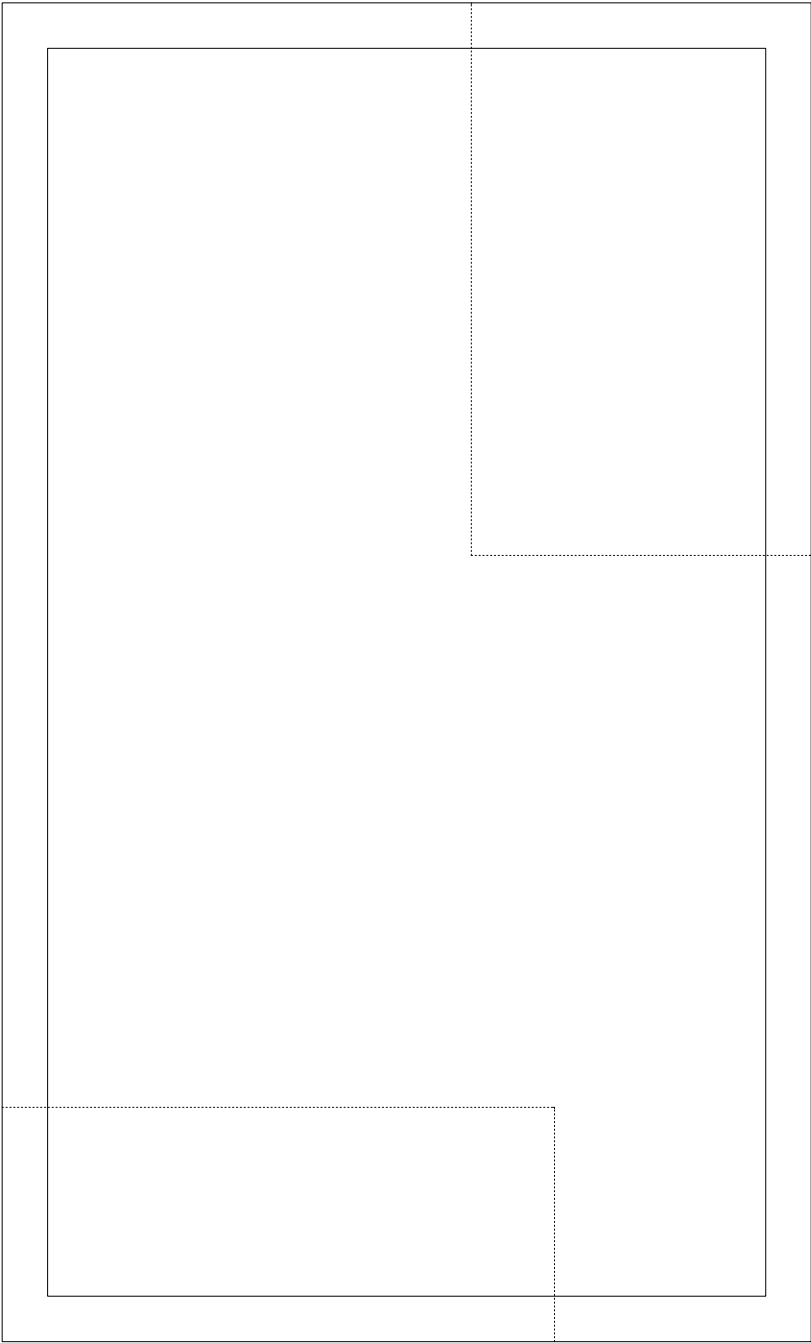
BHS 19-04
061 Vorprojekt Schule, Baar
MS / Aula+TH 1-200
EG
27.11.19 / DIN A3 / th, cw

EG

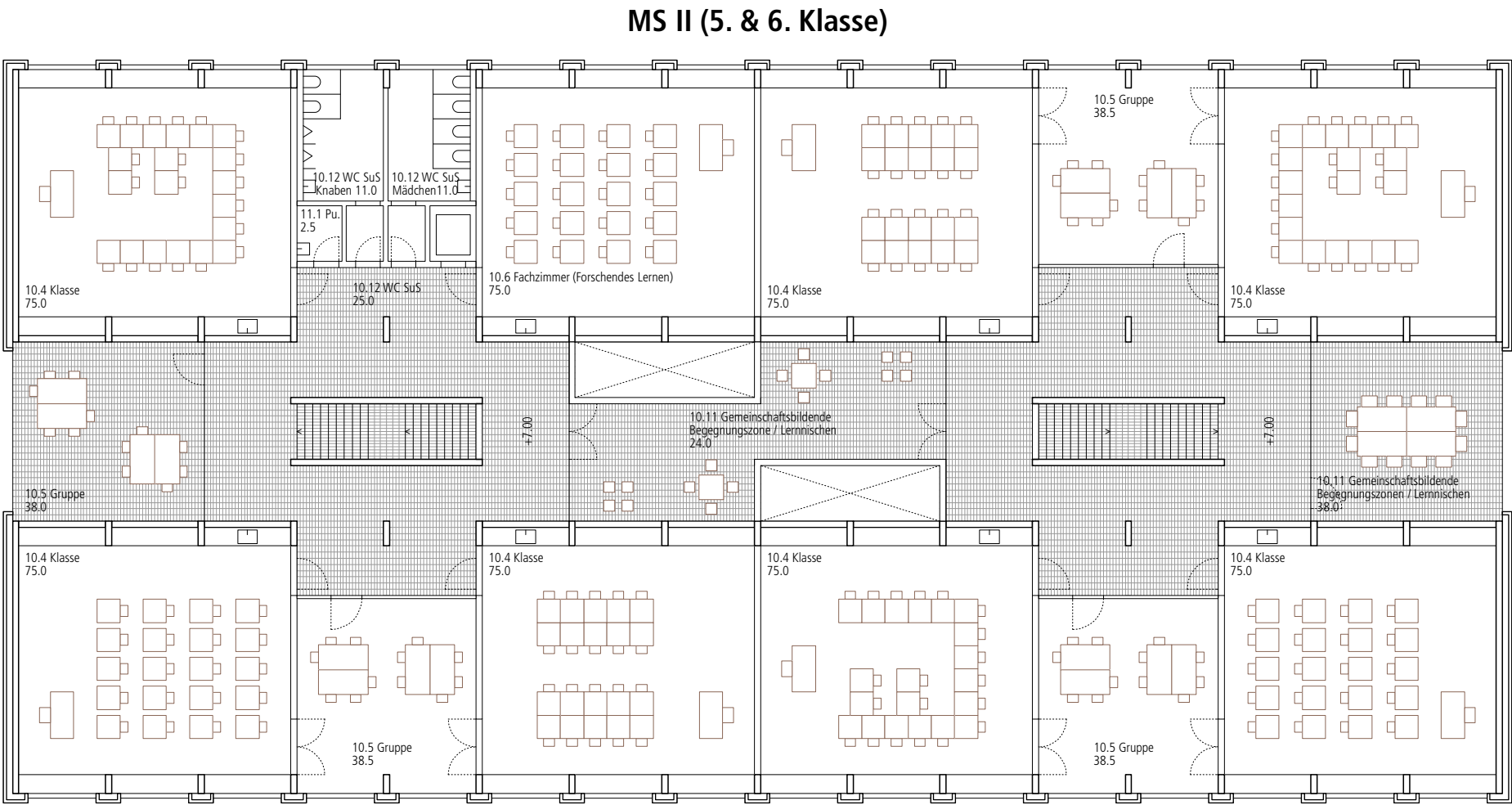


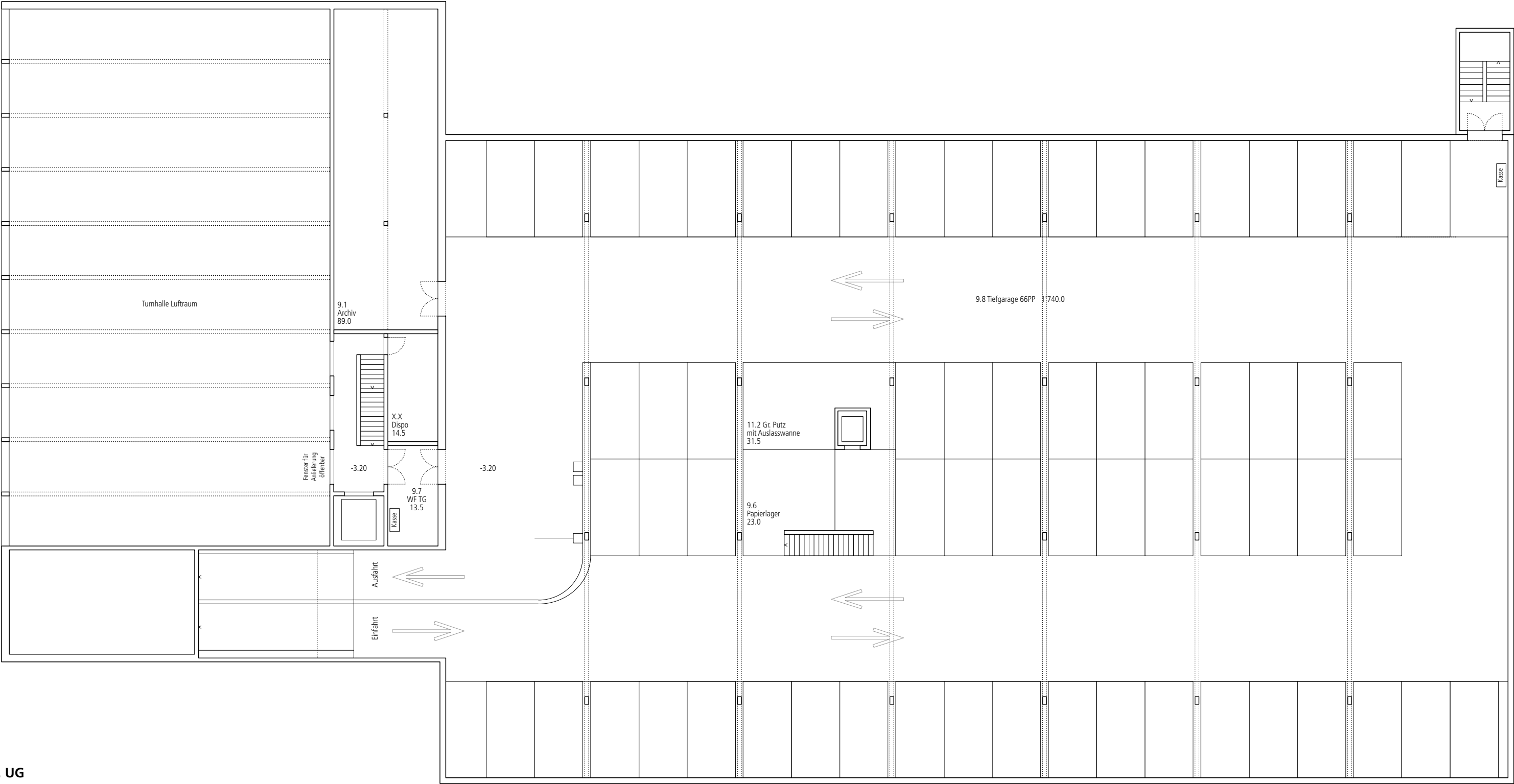
1. OG



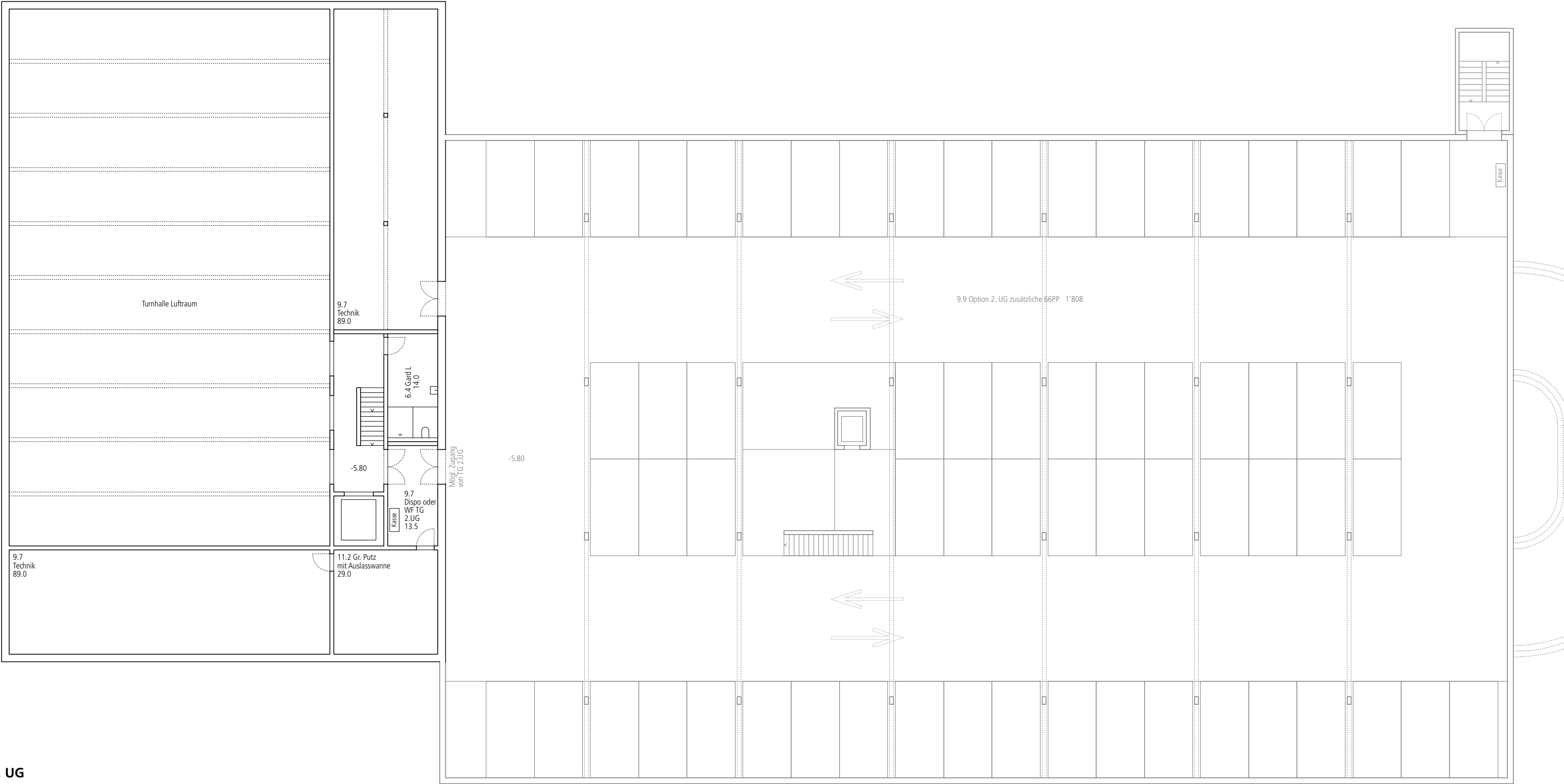


2. OG

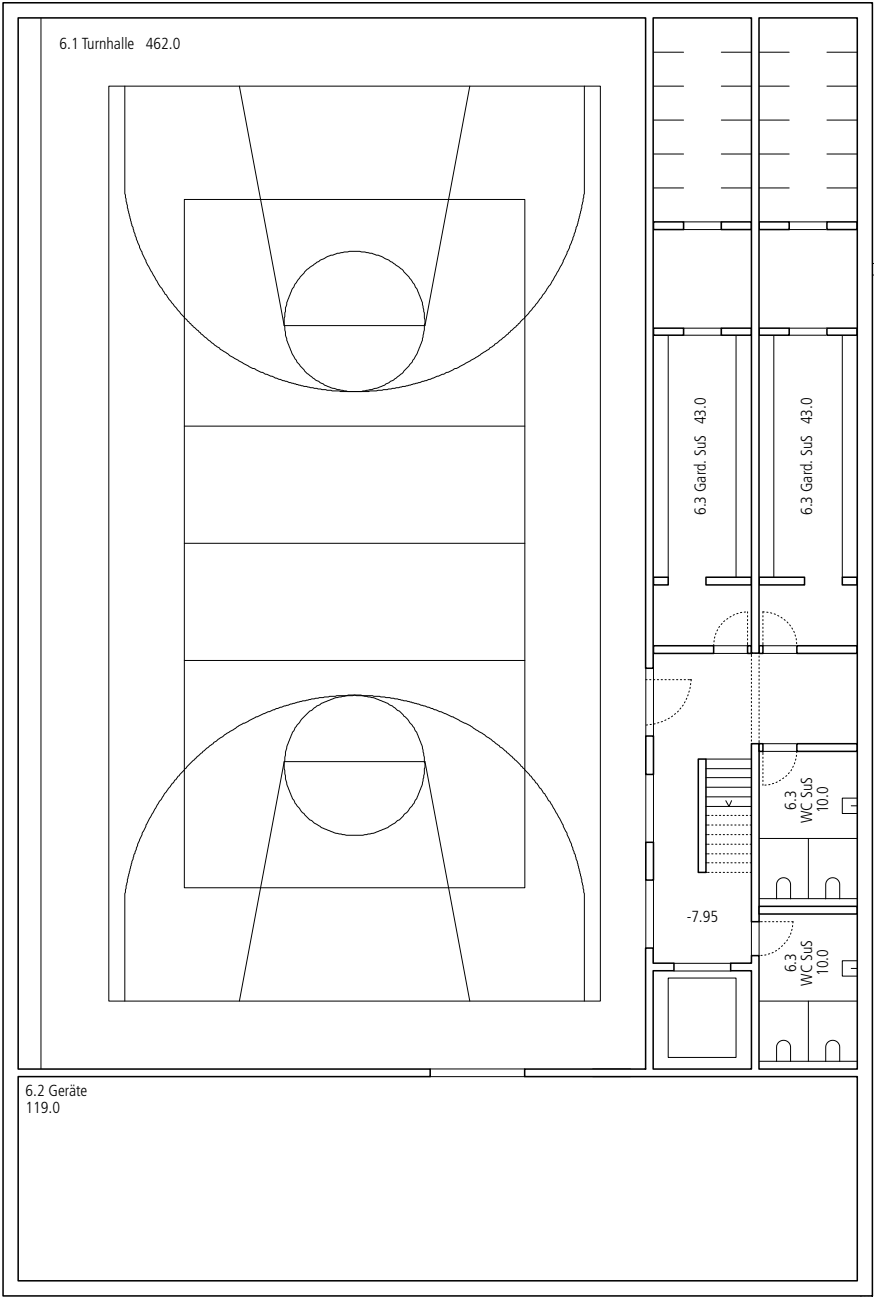
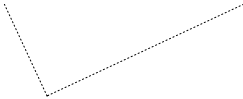




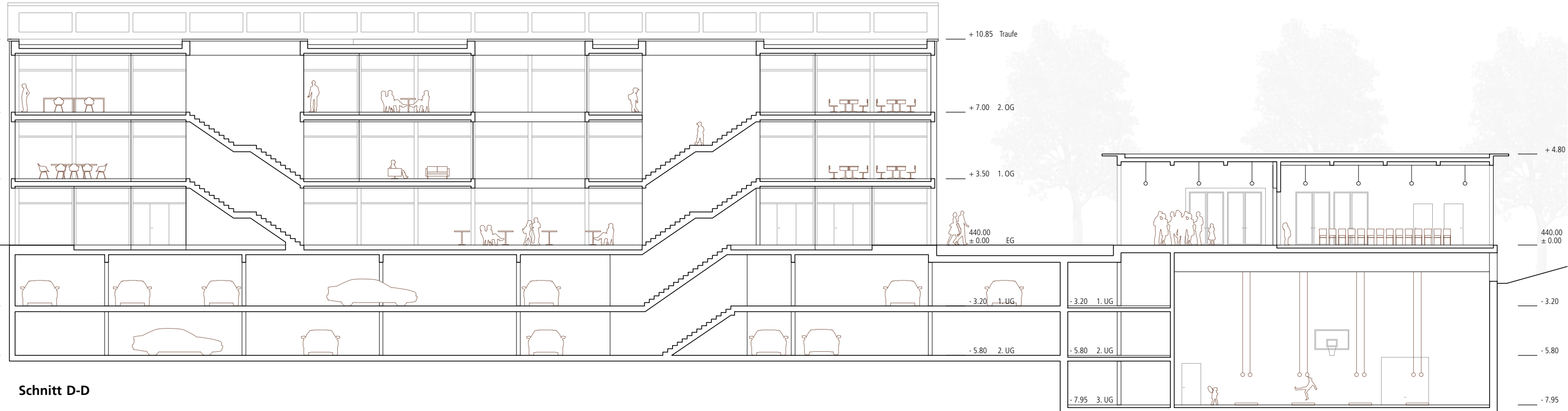
1. UG



2. UG



3. UG



Schulhaus MS I + II

Aula/MZR + Turnhalle



Fassadenansicht Ost

BHS 19-04

061 Vorprojekt Schule, Baar

MS / Aula+TH 1-200

SN / AN

27.11.19 / DIN A3 / th, cw